

MBRP Header Installation Instructions

1280400 2014-2016 Ski-Doo XS/XM 900 ACE

*Retain all removed stock hardware, springs, and gaskets for reuse.

1. Remove the side panels and the engine cover to expose the stock manifold and exhaust pipe.
2. Remove the two (2) springs attaching the muffler to the exhaust front pipe.
3. Remove the two (2) springs on the (upper) front side and (lower) back side of the muffler. They will be reused.
4. Remove the stock muffler from the belly pan and remove the gasket at the muffler inlet.
5. Remove the four (4) springs attaching the exhaust pipe to the exhaust manifold. Remove the exhaust pipe by sliding the hanger out of the rubber isolator, and then remove the gasket from the manifold.
6. Remove the nine (9) hex flange bolts from the manifold flange, then remove the manifold and steel gasket.
7. Install the sandwich-mount vibration dampener onto the end of the M6 bolt on the right-hand side of the frame, fully tightening it onto the factory nut. Refer to **Figure 1**.
8. Position the header assembly in place with the gasket behind the flange. It may be necessary to adjust the steering column to get the header in place. The support bracket should fit onto the M6 stud on the vibration dampener.
9. Reinstall the nine (9) hex flange bolts.
10. Install the washer, lock washer, and M6 nut onto the vibration dampener stud to secure the mounting bracket.
11. Install one of the previously-removed exhaust gaskets onto the header outlet and then install the mid-pipe onto the header with three (3) of the previously-removed springs. Orient the mid-pipe as shown in **Figure 2**.
12. Install the other exhaust gasket onto the end of the mid-pipe and reinstall the muffler using the previously removed springs.
13. Replace the engine cover and side panels.

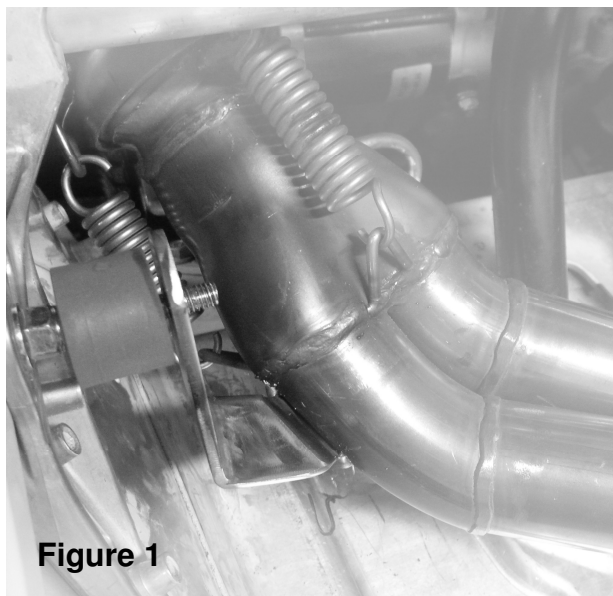


Figure 1

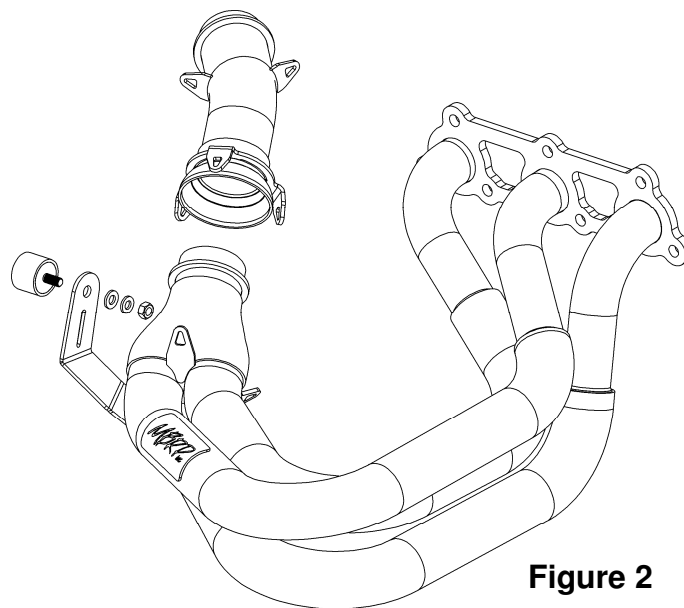


Figure 2

CAUTION: DO NOT touch the exhaust while snowmobile is running or shortly after it has run, as it may result in personal injury.

MBRP Inc warranty applies for a one (1) year period from the date of purchase to defects in product material and workmanship and is to the original purchaser on record and for the original vehicle for which it was designed and installed. This warranty is limited, at MBRP Inc.'s sole determination, to the repair or replacement of defective product only and does not include the cost of removal or re-installation, damage by accident, abuse, misuse or misapplication or any consequential damages however they may arise. Determination of warranty coverage shall be at the discretion of an authorized MBRP Inc quality engineer.