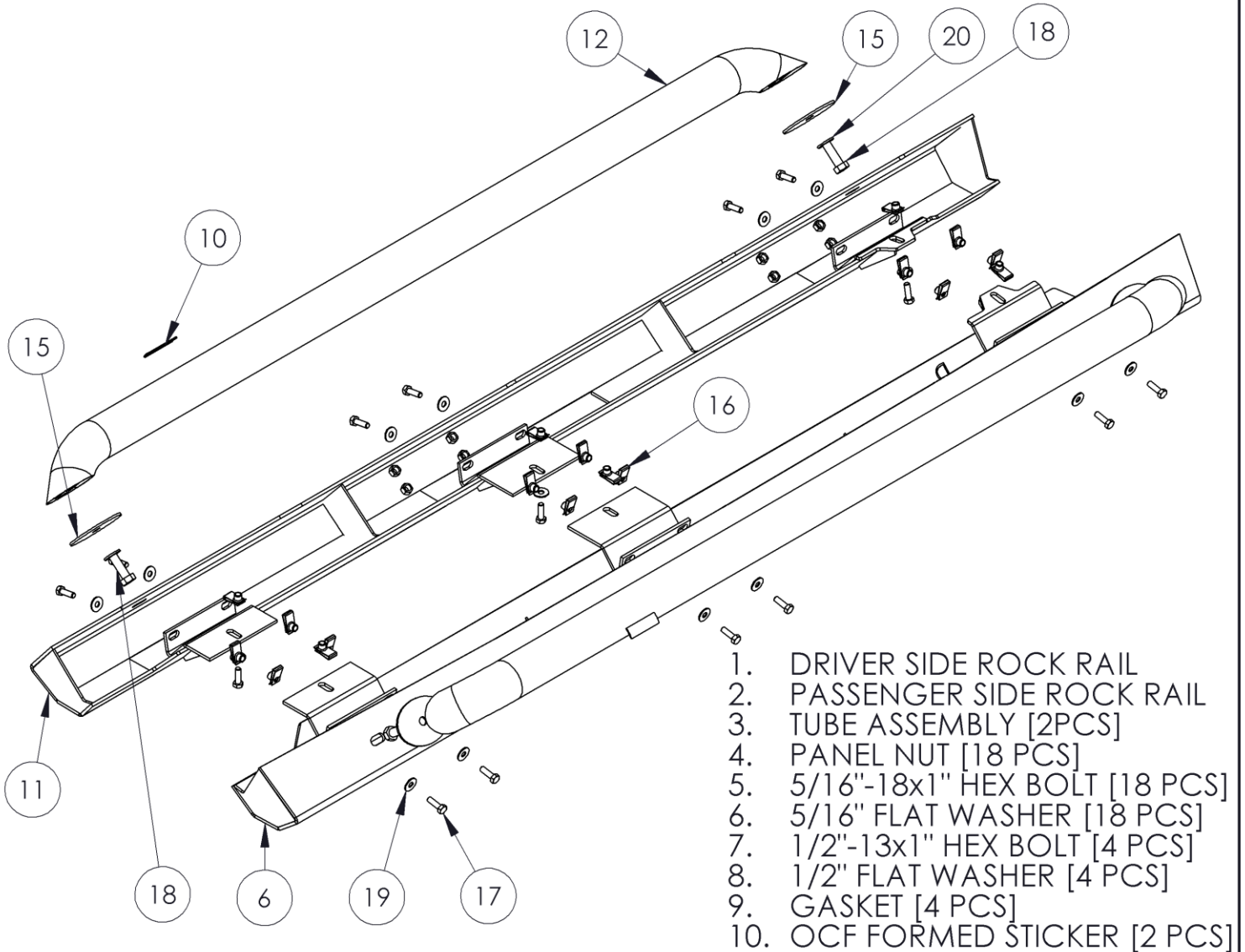


130714

07-17 JEEP JK 4 DOOR - ROCK RAIL KIT

**OFF CAMBER  
FABRICATIONS**

by: **MBRP** INC.



1. DRIVER SIDE ROCK RAIL
2. PASSENGER SIDE ROCK RAIL
3. TUBE ASSEMBLY [2PCS]
4. PANEL NUT [18 PCS]
5. 5/16"-18x1" HEX BOLT [18 PCS]
6. 5/16" FLAT WASHER [18 PCS]
7. 1/2"-13x1" HEX BOLT [4 PCS]
8. 1/2" FLAT WASHER [4 PCS]
9. GASKET [4 PCS]
10. OCF FORMED STICKER [2 PCS]

## PLEASE READ BEFORE STARTING INSTALLATION

While MBRP Inc. has made every effort to ensure that this component is of superior quality and securely packaged, it is the installers responsibility to ensure the following before starting:

- that the component is undamaged.
- That the component is appropriate for the year, make and model of vehicle it is to be installed to;
- that you have read and understand these instructions.

If you have any questions or are uncertain about any aspect of the installation of this component on your vehicle please contact your dealer before commencing installation.

## 2007-2017 Jeep JK Rock Rail Kit

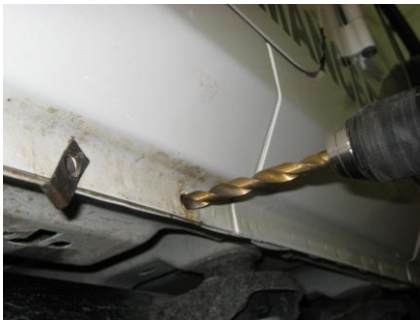


Figure 1



Figure 2



Figure 3



1. Remove the factory installed rock rails by removing the fasteners located at the pinch weld, and the underside in the floor. Keep the 6 fasteners [3 per side] removed from underneath in the floor. These will be reused.

2. There are 6 factory holes in the pinch weld area. Please note that a couple of the holes will need to be drilled out to a larger size using a 1/2" drill bit to accommodate installation of the **Panel Nuts**. Install the 12 **Panel Nuts** [6 per side] by aligning them with the factory holes in the pinch weld area, then sliding them up into place over the hole. The **Panel Nuts** will snap into place when installed correctly. **Refer to Figure 1.**

3. Install the **Driver Side Rock Rail Assembly** by holding it up in position and installing the 3 fasteners that thread into the floor first. These should only be installed finger tight for now. The assembly can hang on these 3 fasteners while you are getting ready to install the remaining hardware. **Refer to Figure 2. Note:** To identify the **Driver Side vs Passenger Side Rock Rail Assembly**, note the location of the Nuts welded into the rail assemblies. These nuts are for mounting the optional **Step Kit #0130715** [not included]. These holes will be below the doors when mounted correctly.

4. Installation of the remaining fasteners is a lot easier with the weight of the **Rock Rail** supported with a floor jack. Lift the assembly up into position and using the supplied **5/16"x1" Hex Bolts** and **Flat Washers**, thread the bolts through the **Rock Rail** into the **Panel Nuts** previously installed. You can access the mounting points through the cut-outs in the bottom of the **Rock Rail**. Do not tighten the fasteners yet. **Refer to Figure 3.**

5. With all the fasteners installed finger tight, confirm there is no risk of interference with the body/ frame. If everything is ok, tighten all the fasteners.

6. Follow the same steps for installation of the **Passenger Side Rock Rail**.

Congratulations! You are finished. Thank you for purchasing an **MBRP INC.** Product.