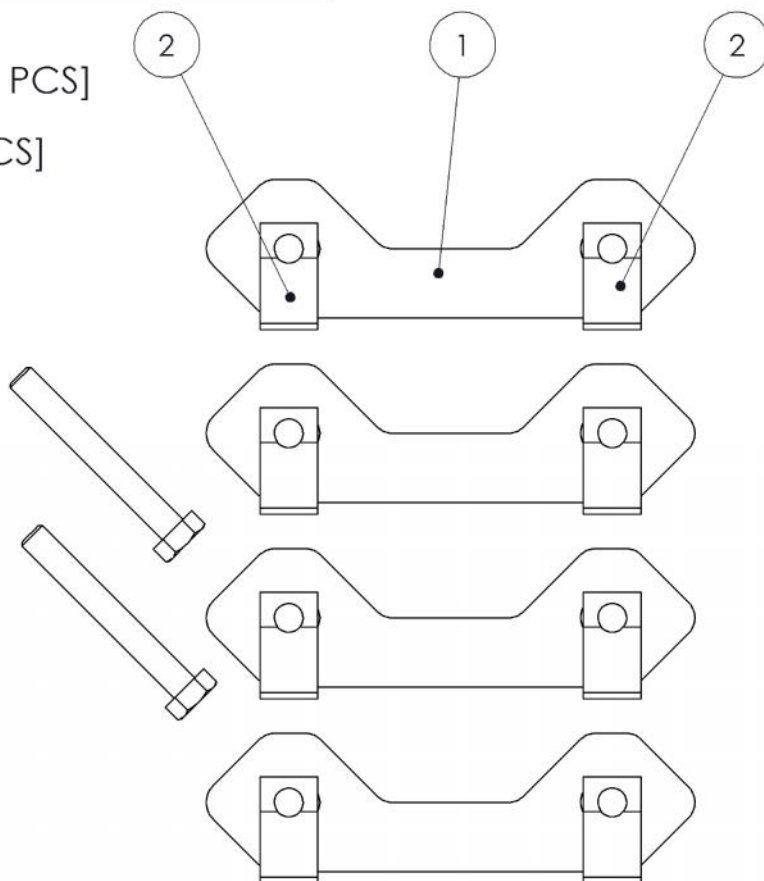


130903

2007-2010 SPARE TIRE
REINFORCEMENT BRACKETS

**OFF CAMBER
FABRICATIONS**
BY MBRP

1. BACKER PLATE [4 PCS]
2. M8PANEL NUT
3. M8x60 BOLT [2 PCS]



PLEASE READ BEFORE STARTING INSTALLATION

While MBRP Inc. has made every effort to ensure that all components of this system are of superior quality and properly packaged, it is the installer's responsibility to ensure the following before removal of the factory exhaust:

- that ALL components shown above are present.
- that ALL mating components fit together.
- that there are no damaged components.
- that the system you have purchased is appropriate for your vehicle year, model and configuration.
- that the system will not interfere with any modifications previously installed or planned.
- that you have read and understand these instructions.

If you have any questions or are uncertain about any aspect of the installation of this system to your vehicle please contact your dealer before commencing installation.

2007-2010 Jeep JK Spare Tire Bracket Reinforcing Kit



Figure 1



Figure 2



Figure 3



Figure 4

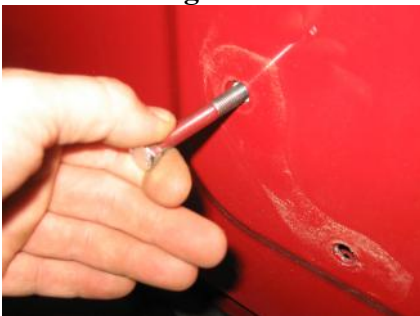


Figure 5

1. Remove the spare tire and set aside.

2. Remove the plastic cover on the inside of the rear door. Unplug the 3rd brake light plug inside.

Refer to Figures 1 and 2.

3. Remove the rubber plug from the rear door that the 3rd brake light wire runs through. Remove the tire bracket by removing the 8 bolts.

Refer to Figures 3 and 4.

4. Remove the vent located behind the tire bracket. The factory weld nuts must be removed. Using the supplied M8x60 Bolt, remove the weld nut by threading the bolt in a few turns and bend the bolt up/down and side to side. The spot welds will easily break off the inside of the door. Reach inside the door and remove the nut from the bolt.

BE CAREFULL NOT TO BEND THE BOLT TOO FAR, IT MAY BREAK!

Repeat this step to remove the remaining 7 weld nuts.

Refer to Figure 5.



Figure 6

5. Install the Panel Nuts as shown onto each of the Backer Plates. Install the completed Backer Plates into the hole in the door. Hold them in position while holding up the tire bracket and reinstalling the hardware removed in Step 3. [You will need a friend to help with this step]. Refer to Figures 6, 7, and 8.



Figure 7

6. Reinstall the vent by sliding it through the opening on the tire bracket and snapping back into place. Refer to Figure 9



Figure 8

7. Reinstall the rubber plug for the 3rd brake light, and reconnect the wiring in the door. Reinstall the plastic grate on the inside of the door and the spare tire.



Figure 9

Congratulations! You are finished. Thank you for purchasing an

OFF CAMBER FABRICATIONS product by *MBRP* INC. t