

1. PASSENGER SIDE SUBASSEMBLY
2. DRIVER SIDE SUBASSEMBLY
3. CENTER CROSSMEMBER
4. END CROSSMEMBER [2 PCS]
5. INNER BRACKET - DRIVER REAR
6. INNER BRACKET - PASSENGER REAR
7. INNER BRACKET - DRIVER FRONT
8. INNER BRACKET - PASSENGER FRONT
9. GASKET [8 PCS]
10. KNOB [2 PCS]
11. 5/16"x1" BOLT [16 PCS]
12. 5/16" NYLOC NUT [24 PCS]
13. 5/16" WASHER [26 PCS]
14. 5/16"x2.5" BOLT [8 PCS]
15. TUBE CAP [4 PCS]
16. GROMMET [6 PCS]

PLEASE READ BEFORE STARTING INSTALLATION

While MBRP Inc. has made every effort to ensure that all components of this kit are of superior quality and properly packaged, it is the installer's responsibility to ensure the following before starting:

- that ALL components shown above are present.
- that ALL mating components fit together.
- that there are no damaged components.
- that the kit you have purchased is appropriate for your year and model of vehicle.
- that the kit will not interfere with any modifications previously installed or planned.
- that you have read and understand these instructions.

If you have any questions or are uncertain about any aspect of the installation of this kit on your vehicle please contact your dealer before commencing installation.

OFF CAMBER FABRICATIONS

by: *MBRP* INC.

2007-2009 Jeep JK 2dr Roof Rack Kit

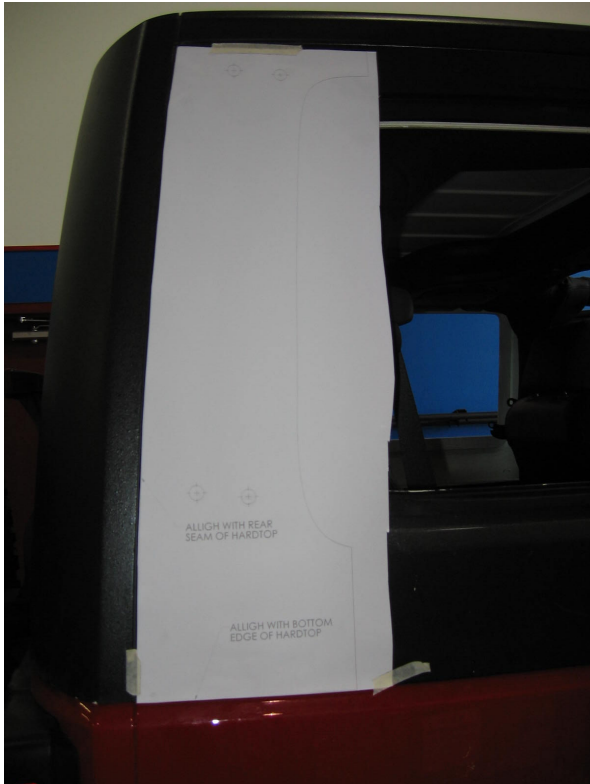


Figure 1



Figure 2

1. Mark the holes to be drilled in the factory hardtop using the supplied **Hole Templates**. There is a front and rear template. LH and RH are mirror image of each other and will use the same template. Trim the template and tape it to the outside of the Hardtop. **ENSURE THAT THE TEMPLATES ARE ALINED WITH THE HARDTOP AS DESCRIBED. THE REAR TEMPLATE MUST BE ALIGNED WITH THE BOTTOM EDGE OF THE HARDTOP, AND THE REAR VERTICAL 'SEAM' OF THE HARDTOP. THE FRONT TEMPLATE MUST BE ALIGNED WITH THE BOTTOM EDGE OF THE HARDTOP AND THE VERTICAL DOORJAM EDGE OF THE HARDTOP. THE WINDOW PROFILES ARE USED AS A REFERENCE ONLY AND SHOULD NOT BE USED TO POSITION THE TEMPLATE OVER THE PROCEDURE OUTLINED ABOVE.** Once the **Hole Templates** are properly positioned, use a 1/16" bit to drill a pilot hole through the template and through the Hardtop. Transfer the Hole Templates to the other side and repeat. Once all pilot holes are drilled, remove the templates and drill the holes out with a 3/8" bit. **Refer to Figures 1 and 2.**

OFF CAMBER FABRICATIONS

by: *MBRP* INC.



Figure 3

2. Remove the 4 corner factory hard top mounting bolts, leaving the center 2 in place. Loosely attach the **Driver and Passenger side, Front and Rear Inner Brackets** using the previously removed bolts. The brackets can easily be identified by the cut-out in the lower pad, ie DF, DR, PF, PR. The brackets may not exactly line up with the previously drilled holes. The brackets are flexible and can be moved to line up with the holes. This is normal.

Refer to Figure 3.



Figure 4

3. Install the **Passenger Side Subassembly** by first pre-assembling with the supplied **5/16"x1" Bolts**. Be sure to place a **5/16" Washer** under the head of the bolts. Next slide the supplied **Gaskets** over the threads of the bolts. The **Gasket** will help hold the bolts in place while installing the assembly. **Refer to Figure 4.**

Note: if you plan to run lights, now is the time to start routing the wiring through the tubing. Typical installations route the wiring harness through the forward downtube of one of the side subassemblies. There is a cutout on the front inner brackets for wiring to pass through. You will need to drill the downtubes to suit your needs.

OFF CAMBER FABRICATIONS

by: *MBRP* INC.



Figure 5

4. Lift the **Passenger Side Subassembly** into position on the side of the hardtop. Line up the holes and slide the **5/16"x1" Bolts** through the hard top, through the holes in the **Inner Brackets**, and secure using the supplied **5/16" Nyloc Nuts**. Do not fully tighten the bolts yet. You will need 2 people for this step. Refer to **Figures 5 and 6**.



Figure 6

5. Before installing the **End Crossmembers**, insert the **Grommets** into the wiring holes. Install the **End Crossmembers** by sliding the ends of the **Crossmembers** into the ends of the **Passenger Side Subassembly**. Ensure the accessory mounting pads are facing up, the light wiring holes are facing rearward on the **Front Crossmember**, forward on the **Rear Crossmember**, and the bolt holes in the **Crossmembers** line up with the holes in the **Passenger Side Subassembly**. Secure the **Crossmembers** by inserting the supplied **5/16"x2.5" Bolts**, **5/16" Nyloc Nuts** and **Washers**. No washers are required under the heads of these bolts. Do not tighten yet. Refer to **Figures 7 and 8**.



Figure 7

OFF CAMBER FABRICATIONS

by: *MBRP* INC.

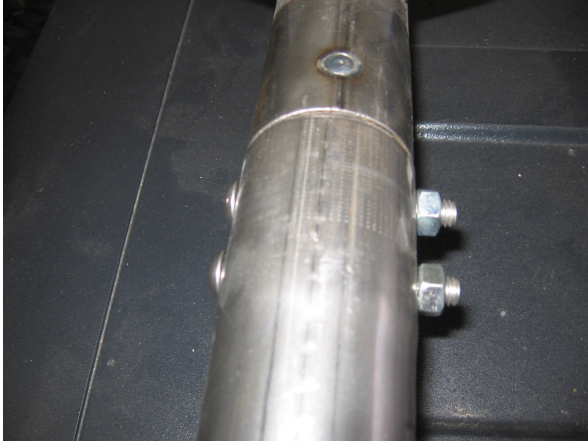


Figure 8

6. Preassemble the **Driver Side Subassembly** as shown in Step 3. Lift the assembly into position as before. Be sure to align the **Crossmembers** with the **Driver Side Subassembly** as well. Some adjustment may be required to get everything to line up and slide into position, this is why all fasteners should be left loose. Secure the **Driver Side Subassembly** to the hardtop using the supplied **5/16" x 1" Bolts, 5/16" Nyloc Nuts and Washers**. Secure the **Crossmembers** to the **Driver Side Subassembly** with the supplied **5/16" x 2.5" Bolts, 5/16" Nyloc Nuts and Washers** as in Step 5. 2 people will be required for this step as well.



Figure 9

7. Install the **Center Crossmember** by choosing a location and securing with the supplied **Knobs and 5/16" Washers**.. Refer to **Figure 9**.

8. Tighten all fasteners to no more than 12 ftlbs. Be careful to not over tighten. Damage to the finish and/or components may result.



* Shown with optional Light Bar Kit #130987

Congratulations! You are finished. We are sure that you will enjoy this **Off Camber Fabrications** product by *MBRP Inc.*