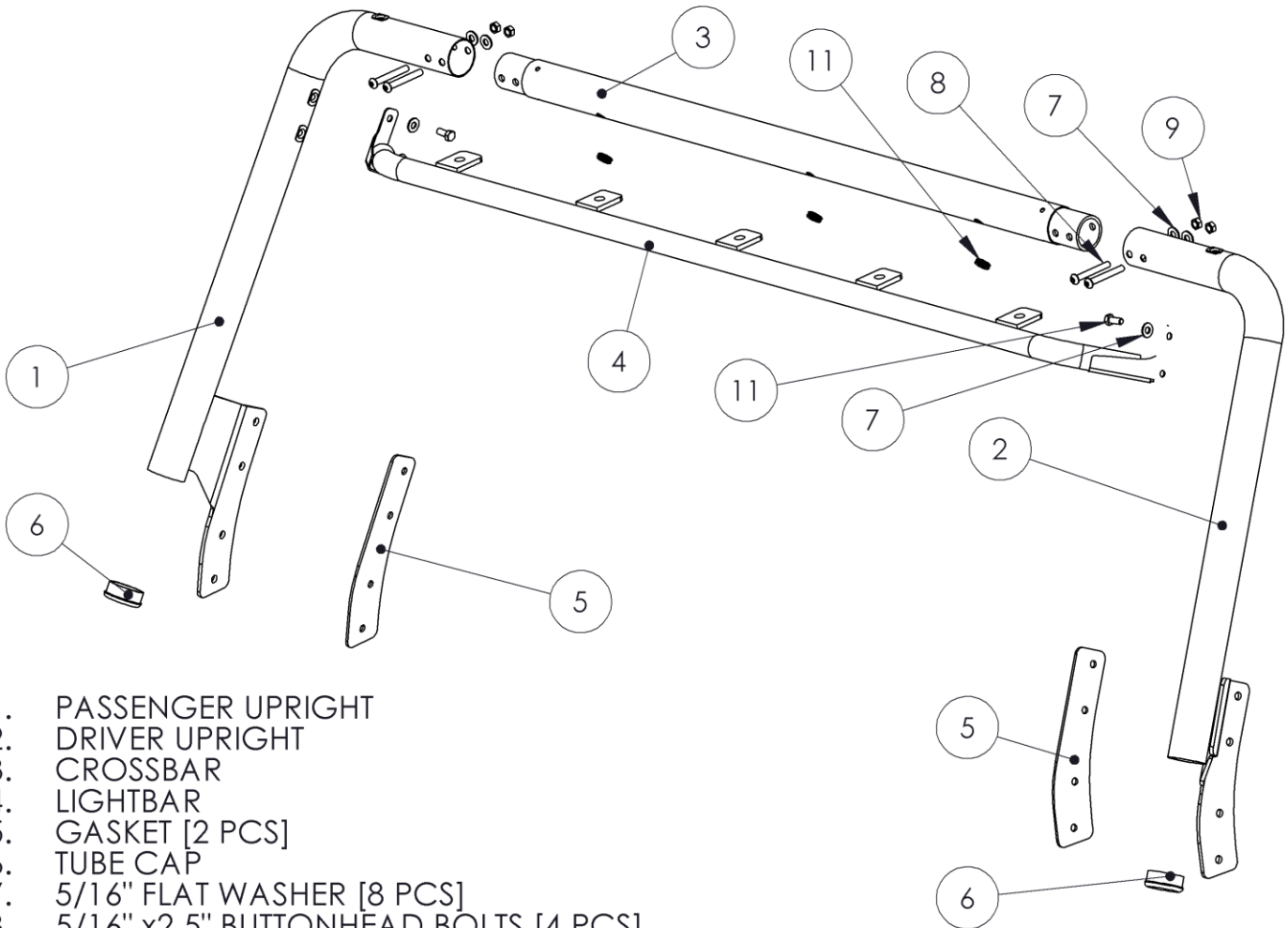


130987

**07-17 JEEP JK WINDSHIELD LIGHT BAR KIT
WITH HOOP**

**OFF CAMBER
FABRICATIONS**

by: **MBRP** INC.



1. PASSENGER UPRIGHT
2. DRIVER UPRIGHT
3. CROSSBAR
4. LIGHTBAR
5. GASKET [2 PCS]
6. TUBE CAP
7. 5/16" FLAT WASHER [8 PCS]
8. 5/16" x2.5" BUTTONHEAD BOLTS [4 PCS]
9. 5/16" NYLOC NUTS [4 PCS]
10. 5/16x3/4" HEX HEAD BOLTS [4 PCS]
11. GROMMET [3 PCS]

PLEASE READ BEFORE STARTING INSTALLATION

While MBRP Inc. has made every effort to ensure that all components of this kit are of superior quality and properly packaged, it is the installer's responsibility to ensure the following before starting:

- that ALL components shown above are present.
- that ALL mating components fit together.
- that there are no damaged components.
- that the kit you have purchased is appropriate for your year and model of vehicle.
- that the kit will not interfere with any modifications previously installed or planned.
- that you have read and understand these instructions.

If you have any questions or are uncertain about any aspect of the installation of this kit on your vehicle please contact your dealer before commencing installation.

2007-2017 Jeep JK Windshield Light Bar w Hoop



Figure 1



Figure 2



Figure 3

1. Install the three **Grommets** into the wiring holes on the underside of the **Crossbar**.
2. Remove the four Torx headed fasteners from the left and right side windshield brackets. Keep these fasteners, you will reuse them. **Refer to Figure 1.**
3. Loosely install the **Driver Upright** and **Passenger Upright** to the Jeep with the previously removed Torx head fasteners. Be sure to install the **Gaskets** between the body and the **Uprights**. Install the **Front Crossbar** between the **Uprights** and secure with the supplied **5/16" x 2.5 Bolts, 5/16" Washers, and 5/16" Nyloc Nuts**. Be sure the wiring holes are facing forward. Do not fully tighten yet. **Refer to Figure 2.**
4. Install the **Light Bar** between the **Uprights** with the supplied **5/16" Hex Bolts, and 5/16" Flat Washers**. Do not fully tighten yet.
5. Tighten the eight Torx fasteners starting from the top and working down. The surface of the Jeep is not flat. The fasteners must be installed from the top down in order for the mounting brackets to fit correctly. **Refer to Figure 3.**
6. Tighten all remaining fasteners.
7. Install the **Tube Caps** with a soft faced hammer.

Congratulations! You are finished. We are sure that you will enjoy this

Off Camber Fabrications product by **MBRP Inc.**