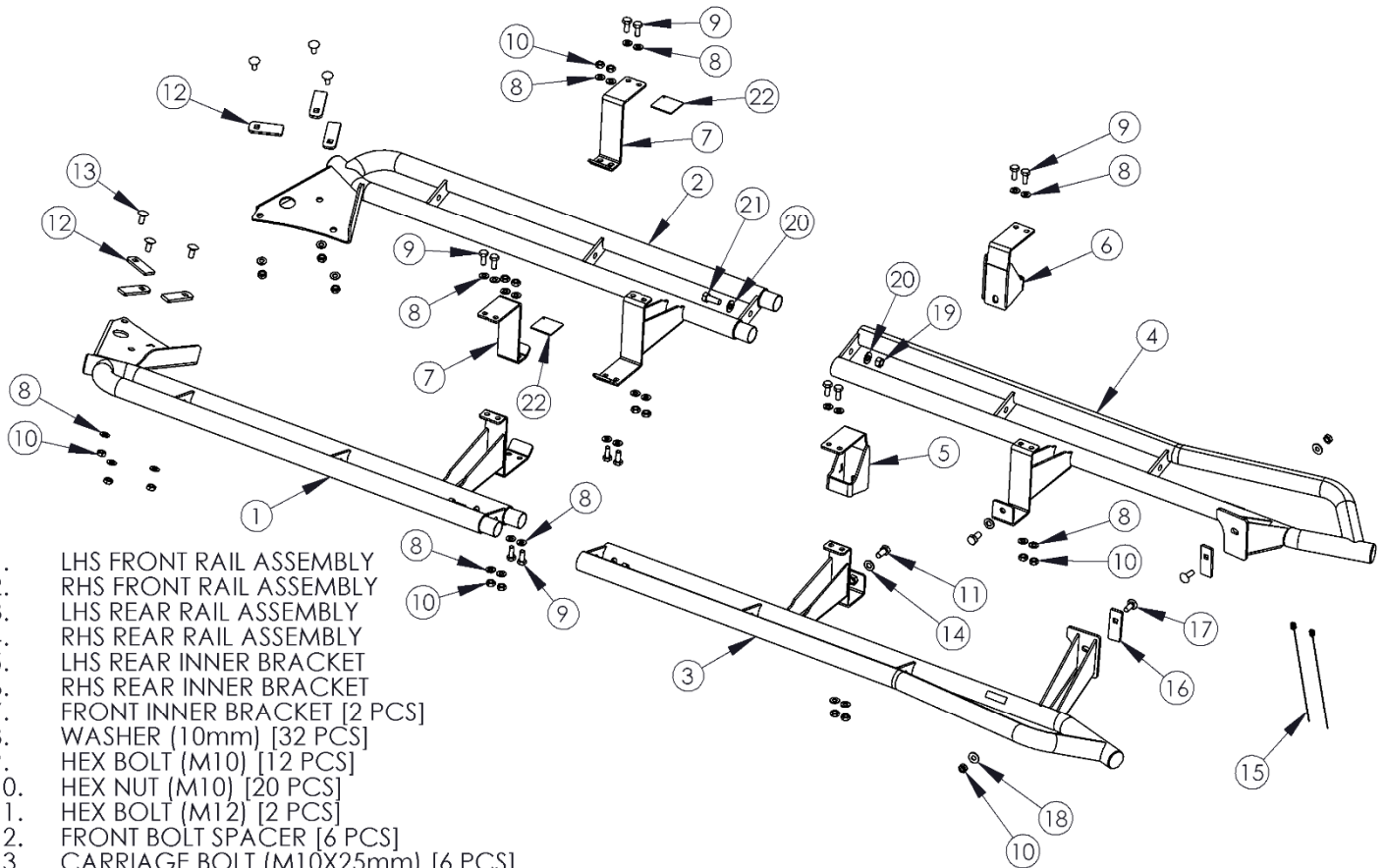


183101
ROCK RAIL KIT
2016 AND UP TOYOTA TACOMA,
140.6" WHEELBASE

OFF CAMBER
FABRICATIONS

by: **MBRP** INC.



1. LHS FRONT RAIL ASSEMBLY
2. RHS FRONT RAIL ASSEMBLY
3. LHS REAR RAIL ASSEMBLY
4. RHS REAR RAIL ASSEMBLY
5. LHS REAR INNER BRACKET
6. RHS REAR INNER BRACKET
7. FRONT INNER BRACKET [2 PCS]
8. WASHER (10mm) [32 PCS]
9. HEX BOLT (M10) [12 PCS]
10. HEX NUT (M10) [20 PCS]
11. HEX BOLT (M12) [2 PCS]
12. FRONT BOLT SPACER [6 PCS]
13. CARRIAGE BOLT (M10X25mm) [6 PCS]
14. WASHER (12mm) [2 PCS]
15. BOLT LEADER [2 PCS]
16. REAR BOLT SPACER [2 PCS]
17. CARRIAGE BOLT (M10X30mm) [2 PCS]
18. WASHER (10mm LARGE O.D.) [2 PCS]
19. NUT (1/2", BLACK) [2 PCS]
20. WASHER (1/2", BLACK) [2 PCS]
21. HEX BOLT (1/2", BLACK) [2 PCS]
22. SHIM [2 PCS]

PLEASE READ BEFORE STARTING INSTALLATION

While MBRP Inc. has made every effort to ensure that all components of this kit are of superior quality and properly packaged, it is the installer's responsibility to ensure the following before starting:

- that ALL components shown above are present.
- that ALL mating components fit together.
- that there are no damaged components.
- that the kit you have purchased is appropriate for your year and model of vehicle.
- that the kit will not interfere with any modifications previously installed or planned.
- that you have read and understand these instructions.

If you have any questions or are uncertain about any aspect of the installation of this kit on your vehicle please contact your dealer before commencing installation.

INSTALLATION OF THE OCF TACOMA ROCK RAILS

1. If the vehicle is equipped with front mud flaps, remove them.
2. Apply black silicone to the tube ends of the **RHS Front Rail Assembly** and insert them into the tubes of the **RHS Rear Rail Assembly**. Join the two using a **Black 1/2" Hex Bolt**, two (2) **Black 1/2" Washers** and a **Black 1/2" Hex Nut**. Do not fully tighten the hardware yet. **Refer to Figure 1**.
3. Insert three (3) of the **25mm Carriage Bolts** into the **Front Bolt Spacers**, then insert them through the frame hole below the body mount (**Refer to Figure 2**), and out of the three frame holes as shown in **Figure 3**. Ensure that the spacers are sitting flat inside the frame structure and that the bolts are coming straight out of the holes (this may require some adjusting).
4. Insert one of the **30mm Carriage Bolts** into a **Rear Bolt Spacer**, then thread a **Bolt Leader** onto the bolt thread. Next, feed the **Bolt Leader** wire through the upper opening of the rear suspension mount and then out of the hole. Next, feed the **Rear Bolt Spacer** through the upper opening and then pull the **30mm Carriage Bolt** through the opening, through the spacer, and out through the frame hole. **Refer to Figure 4 and Figure 6**.

Leave the **Bolt Leader** attached to the **Carriage Bolt** as it will aid in getting the **Rock Rail** onto the bolt and mounted to the frame.



Mounting the Rock Rail Assembly to the vehicle requires two people as it must be held in place while installing the hex nuts. A third person is helpful for an easier install.

5. With the help of a second person, lift the **Rock Rail Assembly** up to the vehicle frame with a downward tilt such that the weld nut on the mid-rear bracket clears the inside lower edge of the frame. **Refer to Figure 5**.
Next, rotate the assembly up to the frame and pass the **Bolt Leader** through the hole of the rear bracket. Guide the rear bracket over the brake line, onto the **Carriage Bolt**, and up to the frame surface while keeping the front end of the **Rock Rail Assembly** low enough to avoid hitting the **Carriage Bolts** at the front end of the frame. **Refer to Figure 6**.
Once the rear bracket is against the frame, pull the **Bolt Leader** off of the **Carriage Bolt** and carefully (not to let the bolt fall back through the hole) secure the bolt with a **Large OD 10mm Washer** and **10mm Hex Nut**. Do not fully tighten.

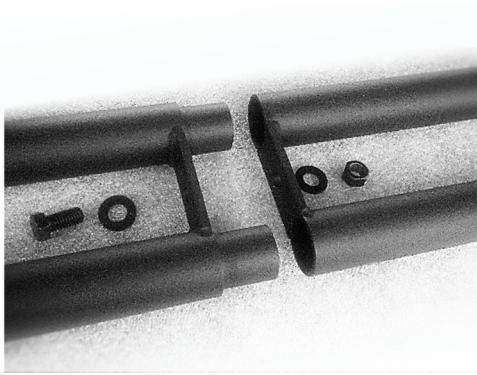


Figure 1



Figure 2

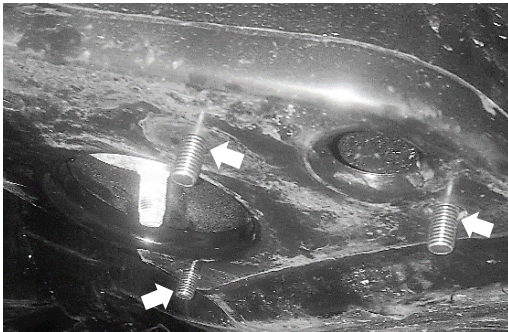


Figure 3

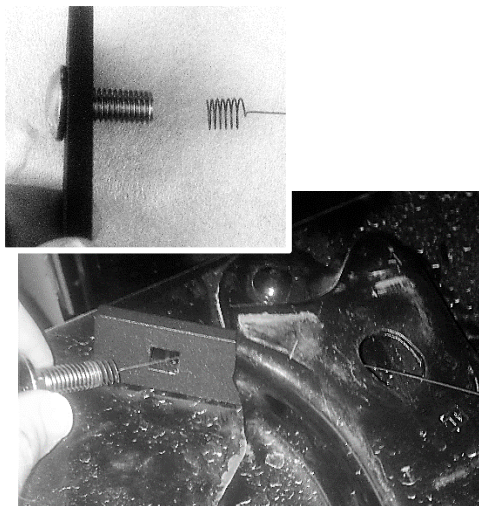


Figure 4

OFF CAMBER FABRICATIONS

by: **MBRP** INC.



Figure 5

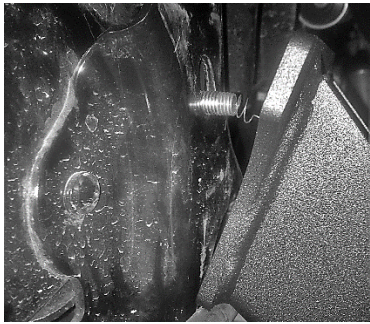


Figure 6



Figure 7



Figure 8

6. With the rear end now held in place, slowly lift the front of the **Rock Rail Assembly** while lining up the holes of the front bracket with the three (3) **Carriage Bolts** (again, be careful not to push the bolts back into the frame). **Refer to Figure 7.** With the front bracket against the frame surface, and the **Carriage Bolts** hanging through the bracket holes, secure the assembly with a **10mm Washer** and **10mm Hex Nut** on each of the three (3) bolts. Do not fully tighten the nuts at this point.
7. Set the **Front Inner Bracket** in place over the top of the frame and in line with the bracket on the **RHS Front Rail Assembly**. Use the provided **Shim plate** between the top of the frame and the **Front Inner Bracket**. Attach the top end of the **Front Inner Bracket** using two (2) **M10 Hex Bolts** and **M10 Hex Nuts**, with two (2) **10mm Washers** on each. Leave the **M10 Hex Nuts** as loose as possible for now. **Refer to Figure 8.**
8. Bring the bottom end of the **Front Inner Bracket** into position and secure it to the assembly bracket using two (2) **M10 Hex Bolts** and **M10 Hex Nuts**, with two (2) **10mm Washers** on each. **Refer to Figure 8.**
9. Begin tightening the four **M10 Hex Bolts** and **M10 Hex Nuts** to bring the brackets together and the **Rock Rail Assembly** into place on the frame, but do not fully tighten them yet. *A socket extension can be used through the bottom hole of the brackets with a swivel joint adapter to aid in tightening the hardware at the top end of the bracket. Refer to Figure 9.*
10. Set the **RHS Rear Inner Bracket** in place over the top of the frame and in line with the bracket on the **RHS Rear Rail Assembly**. **Refer to Figure 10.** Secure the top end of the **RHS Rear Inner Bracket** using two (2) **M10 Hex Bolts** and **M10 Hex Nuts**, with two (2) **10mm Washers** on each. Leave the **M10 Hex Nuts** as loose as possible for now.
11. Bring the bottom end of the **RHS Rear Inner Bracket** into position and thread an **M12 Hex Bolt** with a **12mm Washer** into the weld nut on bracket of the **RHS Rear Rail Assembly**. **Refer to Figure 10.**
12. Now, fully tighten the **Black 1/2" Hex Bolt** and **Black 1/2" Hex Nut** securing the **RHS Front Rail Assembly** and **RHS Rear Rail Assembly** together.

OFF CAMBER FABRICATIONS

by: *MBRP* INC.

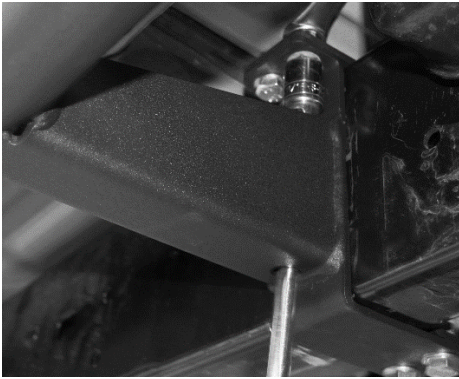


Figure 9

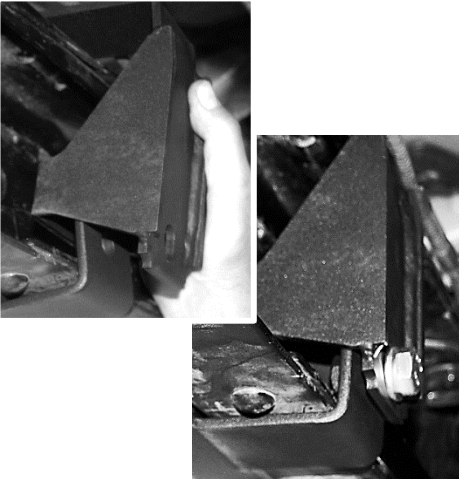


Figure 10



Figure 11

13. Tighten the two **M10 Hex Bolts** and **M10 Hex Nuts** at the top of the **RHS Rear Inner Bracket**; as the hardware gets tighter, begin to tighten the **M12 Hex Bolt** on the back of the bracket to clamp the **Rock Rail Assembly** to the frame. Fully tighten both **M10 Hex Bolts** and the **M12 Hex Bolt**. *Note that the brackets will bend together at the top of the vehicle frame – this is intended.*
14. Fully tighten the four (4) **M10 Hex Bolts** and **M10 Hex Nuts** of the **Front Inner Bracket**.
15. Fully tighten the three (3) **M10 Hex Nuts** on the front bracket of the **RHS Front Rail Assembly**.
16. Fully tighten the **M10 Hex Nut** on the rear bracket of the **RHS Rear Rail Assembly**.
17. Repeat Steps 2-16 for the **LHS Rock Rail Assembly**!

Congratulations! You're finished! We are sure that you will enjoy this ***Off Camber Fabrications*** product by *MBRP Inc.*

