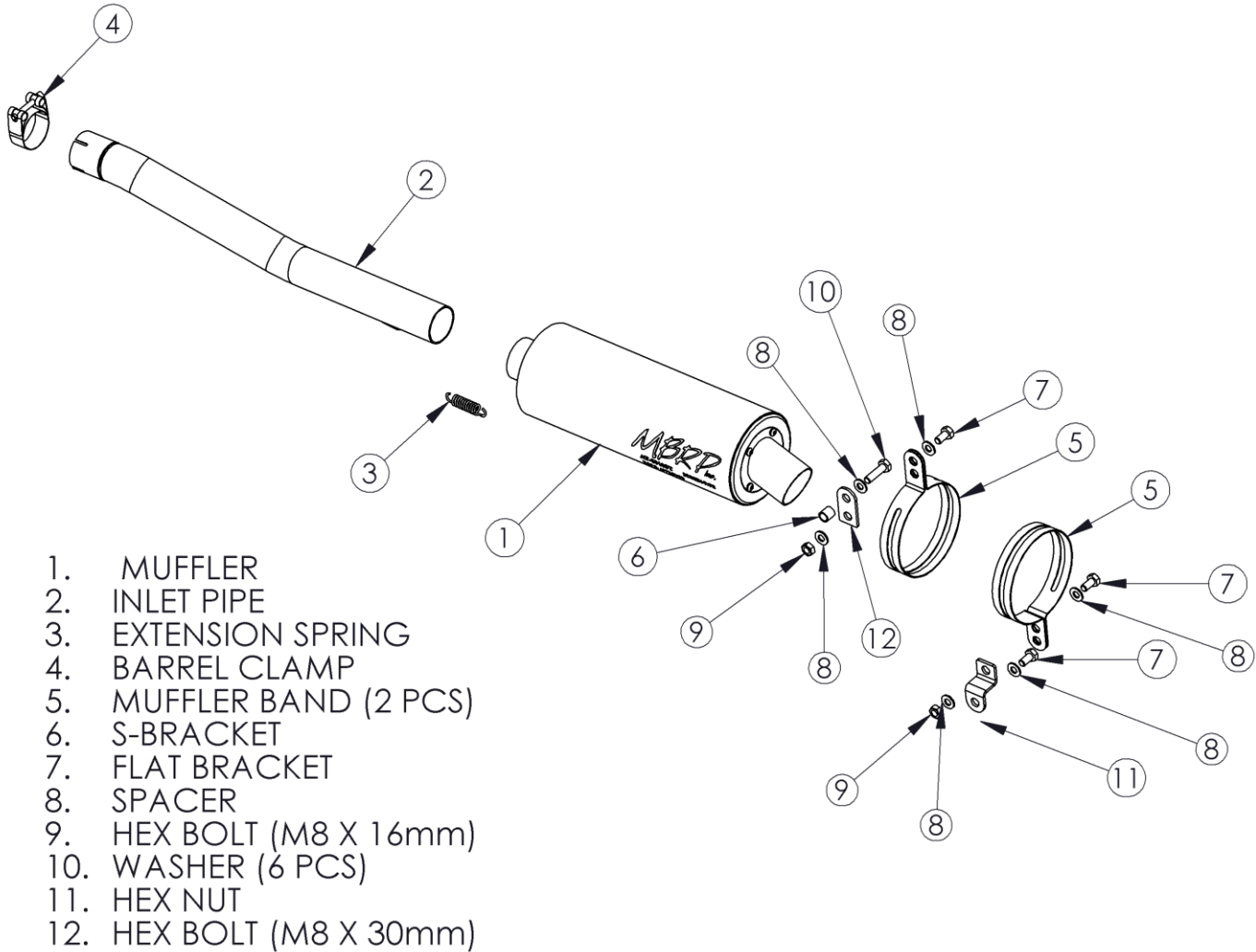


AT-6304SP/AT-8304P
SPORT / PERFORMANCE MUFFLER
SLIP-ON SYSTEM
SUZUKI 700/750 KING QUAD 2005-2013

MBRP
INC.
PERFORMANCE EXHAUST



PLEASE READ BEFORE STARTING INSTALLATION

While MBRP Inc. has made every effort to ensure that all components of this system are of superior quality and properly packaged, it is the installer's responsibility to ensure the following before removal of the factory exhaust:

- that ALL components shown above are present.
- that ALL mating components fit together.
- that there are no damaged components.
- that the system you have purchased is appropriate for your year and model of bike.
- that the system will not interfere with any modifications previously installed or planned.
- that you have read and understand these instructions.

If you have any questions or are uncertain about any aspect of the installation of this system to your bike please contact your dealer before commencing installation.



Figure 1

Removal of Stock Exhaust:

1. Loosen the clamp holding the exhaust to the header pipe.
2. Remove the canister mounting fasteners and then remove the exhaust.

Installation of MBRP Inc. Exhaust:



Figure 2

1. Slide the **Barrel Clamp** over the expanded end of the **Inlet Pipe** and install it onto the end of the stock header pipe. Do not tighten the **Barrel Clamp** yet, as the inlet pipe may need to be rotated into the correct position. **Refer to Figure 1.**

2. Attach the **Flat Bracket** to the outer hole of the **Muffler Band** using the hardware provided. Do not tighten the hardware yet.

3. Place the assembled **Muffler Band** and **Flat Bracket** into position through the heat shield and onto the upper frame mount. Attach the **Flat Bracket** using the provided **Spacer** and **16mm Hex Bolt**. **Refer to Figure 2.**



Figure 3

4. Install the **Muffler** through the front **Muffler Band** and onto the end of the **Inlet Pipe**.

5. Attach the **S-Bracket** to the inner hole of the 2nd **Muffler Band** using the hardware provided. Do not tighten the hardware yet.

6. Place the assembled **Muffler Band** and **S-Bracket** into position over the **Muffler** and onto the lower frame mount. Attach the **S-Bracket** using the provided **16mm Hex Bolt**. **Refer to Figure 3.**



Figure 4

7. Align the spring tabs on the Inlet Pipe and Muffler, and attach them using the **Extension Spring**.

8. Make any necessary adjustments to the exhaust alignment and then tighten the barrel clamp and mounting hardware. **Refer to Figure 4.**

Congratulations! You are ready to begin experiencing the improved performance and driving excitement of your MBRP Inc. ATV Exhaust upgrade. We know you will enjoy your purchase.



Figure 1



Figure 2



Figure 3



Figure 4

Spark Arrestor Maintenance

In order to maintain optimal performance, the spark arrestor screen should be cleaned after every 30-35 hours of use.

Clean-out Instructions:

Make sure the vehicle is cool before completing the clean-out procedure.

1. Using a 1/8" hex key, remove the 4 screws securing the outlet cap. **(Figure 1)**
2. Remove the outlet cap to expose the spark arrestor screen insert. **(Figure 2)**
3. Remove the screen insert. **(Figure 3)**
4. Using a wire brush, thoroughly brush the screen to remove residue. **(Figure 4)**
5. Replace the screen and cap.
6. Tighten the screws to 23 in-lbs (2.6 Nm).