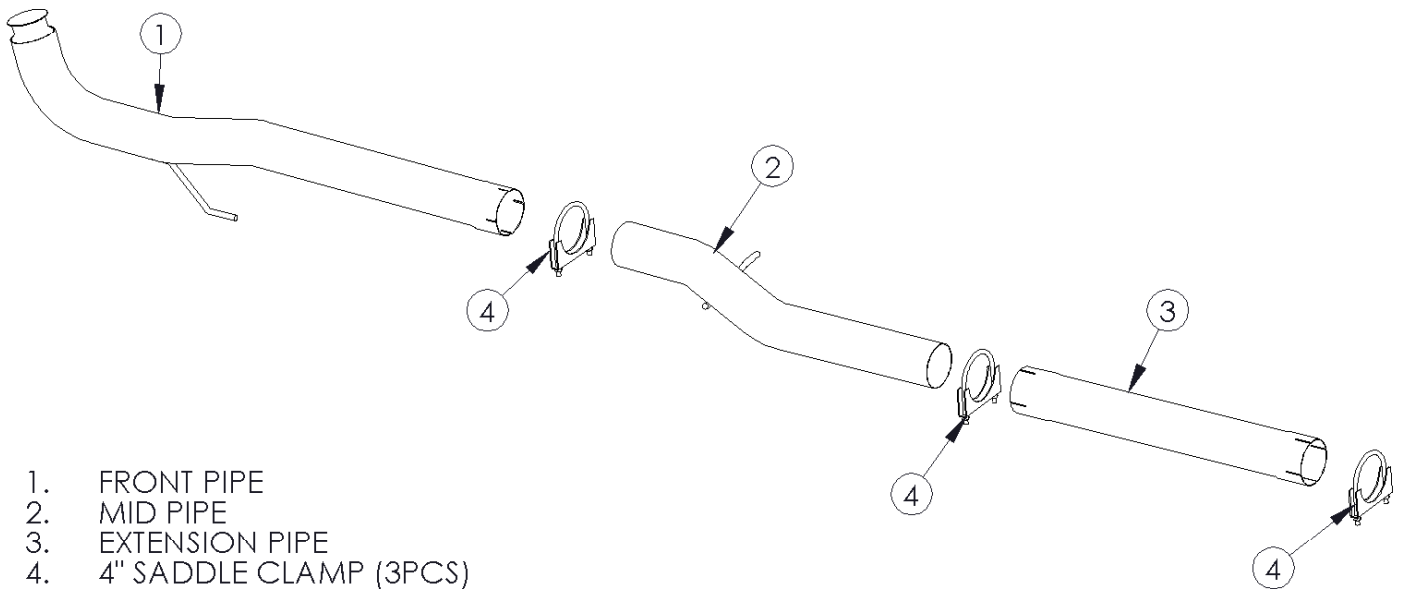


C1671ALNB / C1671409NB

2011 CHEVROLET/ GMC HD PICK-UP,
EXTENDED / CREW, 6.6L DURAMAX
4" COMPETITION PIPES



1. FRONT PIPE
2. MID PIPE
3. EXTENSION PIPE
4. 4" SADDLE CLAMP (3PCS)

FOR RACE/COMPETITION USE ONLY!

Installation of this product for highway or recreational is prohibited by Federal law. This product's use is restricted to organized, amateur and professional racing events, limited to closed-course racing and open-course racing that is formally sanctioned by a recognized racing organization.

This system requires an aftermarket electronic programmer to work with the vehicle.

PLEASE READ BEFORE STARTING INSTALLATION

While MBRP Inc. has made every effort to ensure that all components of this system are of superior quality and properly packaged it is the installer's responsibility to ensure the following before removal of the factory exhaust:

- that ALL components shown above are present.
- that ALL mating components fit together.
- that there are no damaged components.
- that the system you have purchased is appropriate for your vehicle year, model and configuration.
- that the system will not interfere with any modifications previously installed or planned.
- that you have read and understand these instructions.

If you have any questions or are uncertain about any aspect of the installation of this system to your vehicle please contact your dealer before commencing installation.

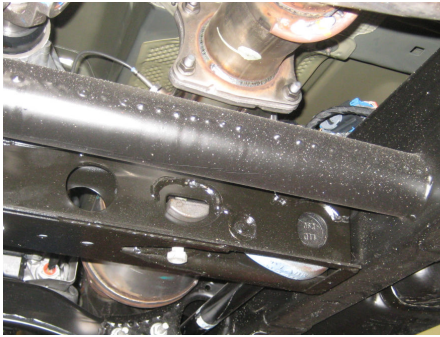


Figure 1

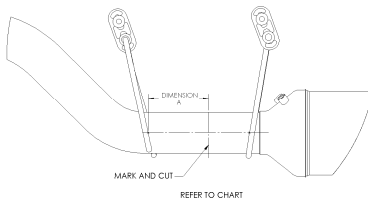


Figure 2

Removal of Stock System:

1. Apply some penetrating lubricant liberally to all exhaust fasteners, hangers and rubber insulators.

2. Loosen the fasteners on the flange located in front of the particulate filter using a 15mm wrench or socket. **Refer to Figure 1.**

3. **Refer to Figure 2** and the chart below to determine where to cut between the tail pipe and particulate filter. Temporarily remove the tail pipe from the vehicle by removing it from the rubber insulators.

Cab Style	Box Style	Wheelbase	Dimension A	Extension pipe
CREW	8' 2"	167.7"	14"	YES
	6' 6"	154.2"	6"	NOT REQUIRED
EXTENDED	8' 2"	157.7"	14"	YES
	6' 6"	144.2"	3.5"	NOT REQUIRED

4. Disconnect all exhaust sensors at their connection points to the vehicle.



Figure 3

5. Remove the exhaust hangers from the isolator mounts and remove the DPF section from the vehicle (This step will require 2 people, as the stock pipe is heavy).

6. The next step is to temporarily remove or the transmission cross-member. Support the transmission reward of the transmission cross-member before starting. Remove the two bolts connecting it to the transmission. **Refer to Figure 3.**



Figure 4

7. Remove the 4 bolts connecting the transmission cross-member to the frame (2 per side). Remove the transmission cross-member save all hardware for reinstallation **Refer to Figure 4.**

8. Unbolt the OEM hanger from the transmission and remove. Do not discard the hanger as it is required for the installation.

9. Loosen the factory band clamp and remove the stock front pipe. Do not discard the band clamp as it is required for the installation. Remove the front pipe cat from the vehicle.

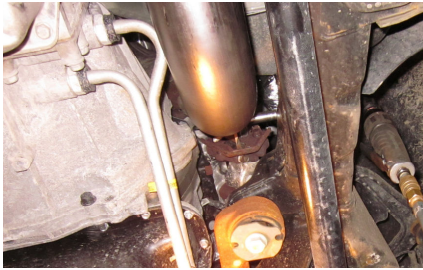


Figure 5

Installation of MBRP Inc. Competition Pipes:

1. Install the **Front Pipe** onto the factory down pipe using the band clamp removed previously. Do not fully tighten to allow for adjustment. **Refer Figure 5.**



Figure 6

2. Install the OEM hanger removed previously by sliding the outside hole in the rubber insulator over the hanger on the **Front Pipe** and re-connect to the transmission. **Refer to Figure 6.**

3. Re-install the transmission cross-member.

4. Install the **Mid Pipe** onto the **Front Pipe** using one of the **4" Saddle Clamp** provided. Do not fully tighten the clamp yet. Refer to the chart below to determine if the **Mid Pipe** requires shortening. **Refer to Figures 7 & 8.**

Cab Style	Box Style	Wheelbase	Dimension B	Extension pipe
CREW	8' 2"	167.7"	NR	YES
	6' 6"	154.2"	5.5"	NOT REQUIRED
EXTENDED	8' 2"	157.7"	10"	YES
	6' 6"	144.2"	12.5"	NOT REQUIRED



Figure 7

5. Install the **Extension Pipe** to the **Mid Pipe** using a **4" Saddle Clamp**.

6. Re-install the stock tail pipe to the end of the **Extension Pipe** using the remaining **4" Saddle Clamp**. **Note:** If installing these Competition Pipes with an MBRP particulate filter back system Trim 3 1/2" from the end of the **Extension Pipe**.

7. Align the exhaust as needed and tighten all clamps.

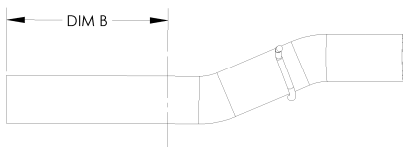


Figure 8

Congratulations! MBRP Competition Exhaust Systems is proud to be a part of your racing and competition success. We know you will enjoy your purchase.