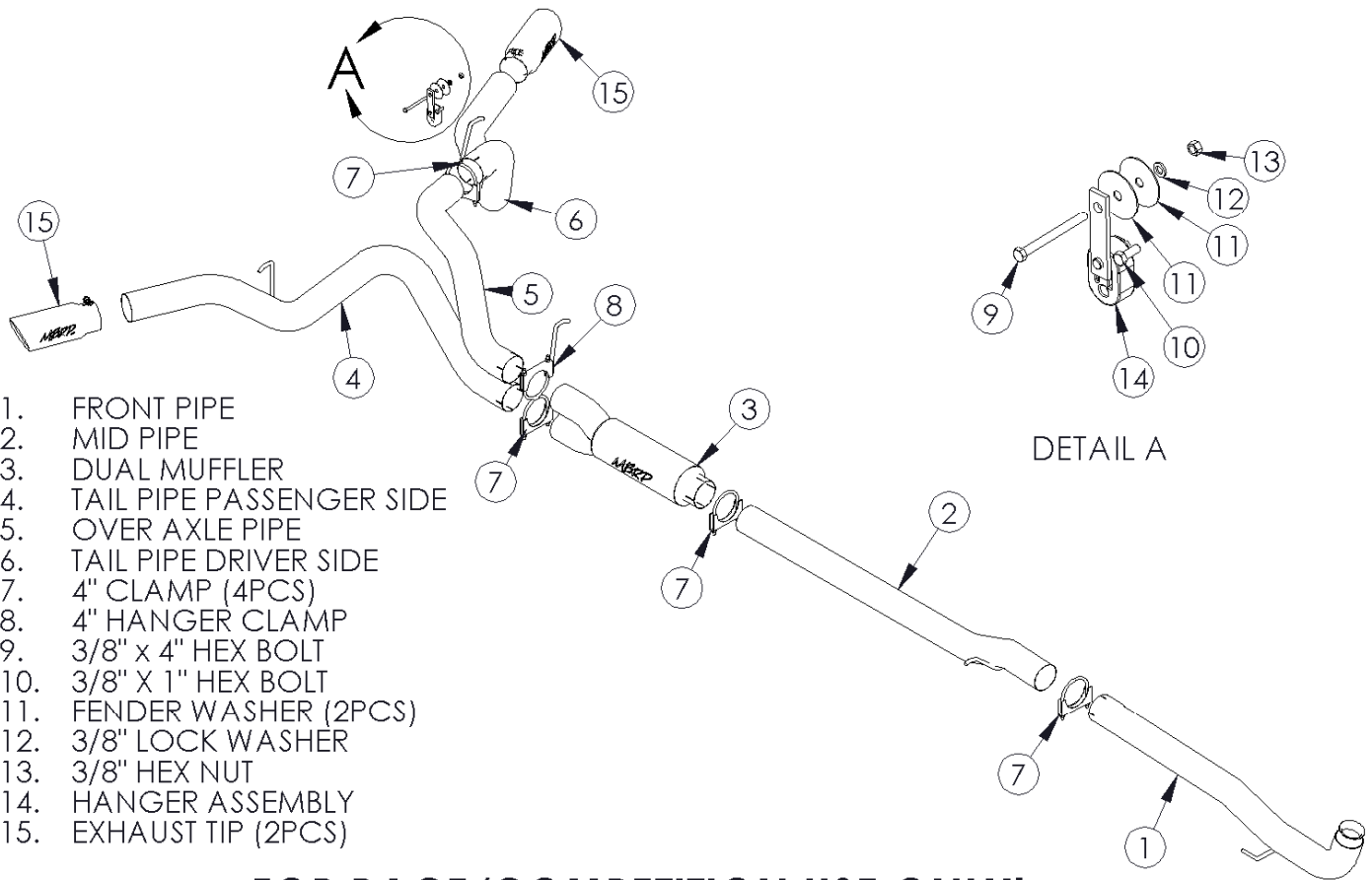


C6046

2011 CHEVY/GMC DURAMAX, 2500/3500,
EC/CC, 4" DOWN PIPE BACK, COMPETITION
SERIES "COOL DUALS"



1. FRONT PIPE
2. MID PIPE
3. DUAL MUFFLER
4. TAIL PIPE PASSENGER SIDE
5. OVER AXLE PIPE
6. TAIL PIPE DRIVER SIDE
7. 4" CLAMP (4PCS)
8. 4" HANGER CLAMP
9. 3/8" x 4" HEX BOLT
10. 3/8" X 1" HEX BOLT
11. FENDER WASHER (2PCS)
12. 3/8" LOCK WASHER
13. 3/8" HEX NUT
14. HANGER ASSEMBLY
15. EXHAUST TIP (2PCS)

DETAIL A

FOR RACE/COMPETITION USE ONLY!

Installation of this product for highway or recreational use is prohibited by Federal law. This product's use is restricted to organized, amateur and professional racing events, limited to closed-course racing and open-course racing that is formally sanctioned by a recognized racing organization.

This system requires an aftermarket electronic programmer to work with the vehicle.

PLEASE READ BEFORE STARTING INSTALLATION

While MBRP Inc. has made every effort to ensure that all components of this system are of superior quality and properly packaged it is the installer's responsibility to ensure the following before removal of the factory exhaust:

- that ALL components shown above are present.
- that ALL mating components fit together.
- that there are no damaged components.
- that the system you have purchased is appropriate for your vehicle year, model and configuration.
- that the system will not interfere with any modifications previously installed or planned.
- that you have read and understand these instructions.

If you have any questions or are uncertain about any aspect of the installation of this system to your vehicle please contact your dealer before commencing installation.



Figure 1



Figure 2



Figure 3



Figure 4

Removal of Stock System:

1. Apply penetrating lubricant liberally to all exhaust fasteners, hangers and rubber insulators.
2. Loosen the fasteners on the flange located in front of the particulate filter using a 15mm wrench or socket. **Refer to Figure 1.**
3. Cut between the tail pipe and particulate filter. Remove the tail pipe from the vehicle by removing it from the rubber insulators. **Refer to Figure 2.**
4. Disconnect all exhaust sensors at their connection points to the vehicle.
5. Remove the exhaust hangers from the isolator mounts and remove the DPF section from the vehicle (This step will require two people, as the stock pipe is heavy).
6. Temporarily remove or the transmission cross-member. Support the transmission rearward of the transmission cross-member before starting. Remove the two bolts connecting it to the transmission. **Refer to Figure 3.**
7. Remove the four bolts connecting the transmission cross-member to the frame, two per side. Remove the transmission cross-member and save all hardware for the reinstallation **Refer to Figure 4.**
8. Unbolt the OEM hanger from the transmission and remove. Do not discard the hanger as it is required for the installation.
9. Loosen the factory band clamp and remove the stock front pipe. Do not discard the band clamp as it is required for the installation. Remove the front pipe catalytic converter from the vehicle.

Installation of MBRP Inc. Competition Pipes:



Figure 5

1. Install the **Front Pipe** onto the factory down pipe using the band clamp removed previously. Do not fully tighten to allow for adjustment. **Refer Figure 5.**



Figure 6

2. Install the OEM hanger removed previously by sliding the outside hole in the rubber insulator over the hanger on the **Front Pipe** and re-connect to the transmission. **Refer to Figure 6.**

3. Re-install the transmission cross-member.

4. Install the **Mid Pipe** onto the **Front Pipe** using one of the **4" Clamps** provided. Do not fully tighten the clamp yet. Refer to the chart below to determine if the **Mid Pipe** requires shortening. **Refer to Figures 7 & 8.**



Figure 7

Cab Style	Box Style	Wheelbase	Dimension A
CREW	8' 2"	167.7"	NR
CREW	6' 6"	154.2"	13"
EXTENDED	8' 2"	157.7"	10"
EXTENDED	6' 6"	144.2"	23"
REG	8' 2"	133"	34"

5. Install the **Muffler** to the **Mid Pipe** using a **4" Clamp**.



Figure 8

6. Use the **4" Hanger Clamp** to install the **Over Axle Pipe** to the Y-Pipe of the **Muffler**. The expanded end slides over the upper outlet of the **Muffler** Y-Pipe. **Refer to Figures 9 & 10.**



Figure 9



Figure 10

7. Slide a **4" Clamp** over bottom outlet of the **Muffler Y-Pipe**. Install the **Passenger Side Tail Pipe** from the rear of the truck, over the axle and slide on the lower outlet of the **Muffler**. Install the Tail Pipe hanger into the factory rubber insulators. **Refer to Figures 9.**



Figure 11

8. Slide a **4" Clamp** over the outlet of the **Over Axle Pipe**. Install the **Driver Side Tail Pipe** from the rear of the truck, between the shock and spare tire and slide the expansion over the outlet of the **Over Axle Pipe**. **Refer to Figure 9.**

9. Install the **Hanger Assembly** on the frame in the large existing hole as shown. Secure with the supplied **3/8"** hardware. **Refer to Detail A in the Illustration. Refer to Figure 12. Note:** The **3/8" x 1" Hex Bolt** will be used with a 3500 Dual Wheeled vehicle and be mounted through the inside frame rail only.

10. Install the **Driver Side Tail Pipe** hanger into the **Hanger Assembly** previously installed in **Step 9. Refer to Figure 12.**



Figure 12

11. Install and adjust the **Exhaust Tips** to suit. Using a 17mm wrench tighten the lock bolt located on each **Exhaust Tip**.

12. Tighten all Clamps starting at the front and working rearward to secure the system. Check along the full length of the exhaust system to ensure there is adequate clearance for fuel lines, brake lines, and any wiring, etc. If any interference is detected, relocate or adjust to provide adequate clearance.

Congratulations! MBRP Competition Exhaust Systems is proud to be a part of your racing and competition success. We know you will enjoy your purchase.

