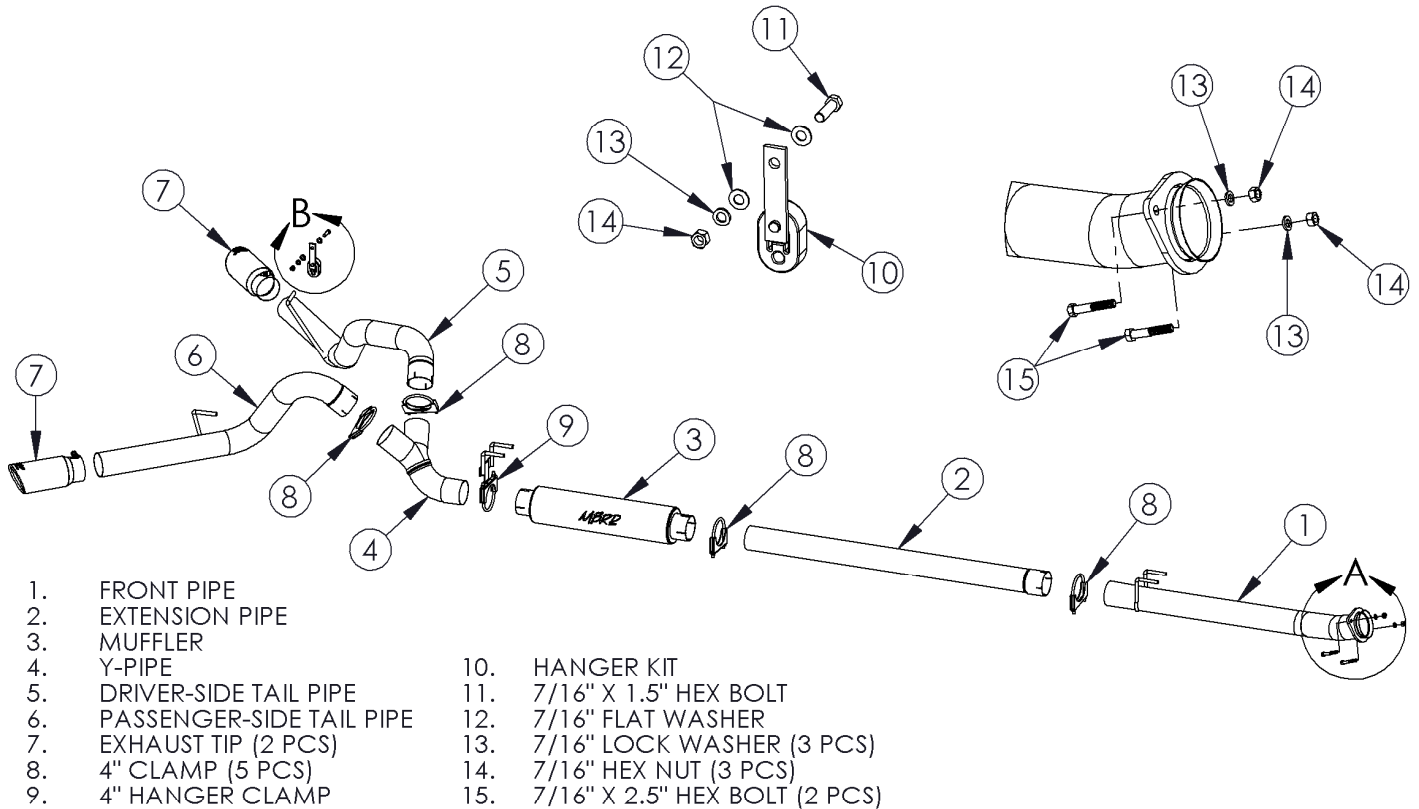


C6264409
DOWN PIPE BACK, 4" COOL DUALS
2011 6.7L FORD POWERSTROKE SUPER-DUTY



- | | |
|-----------------------------|-----------------------------------|
| 1. FRONT PIPE | 10. HANGER KIT |
| 2. EXTENSION PIPE | 11. 7/16" X 1.5" HEX BOLT |
| 3. MUFFLER | 12. 7/16" FLAT WASHER |
| 4. Y-PIPE | 13. 7/16" LOCK WASHER (3 PCS) |
| 5. DRIVER-SIDE TAIL PIPE | 14. 7/16" HEX NUT (3 PCS) |
| 6. PASSENGER-SIDE TAIL PIPE | 15. 7/16" X 2.5" HEX BOLT (2 PCS) |
| 7. EXHAUST TIP (2 PCS) | |
| 8. 4" CLAMP (5 PCS) | |
| 9. 4" HANGER CLAMP | |

FOR RACE/COMPETITION USE ONLY!

Installation of this product for highway or recreational use vehicles is prohibited by Federal law. This product's use is restricted to organized, amateur and professional racing events, limited to closed-course racing and open-course racing that is formally sanctioned by a recognized racing organization.

This system requires an aftermarket electronic programmer to work with the vehicle.

PLEASE READ BEFORE STARTING INSTALLATION

While MBRP Inc. has made every effort to ensure that all components of this system are of superior quality and properly packaged it is the installer's responsibility to ensure the following before removal of the factory exhaust:

- that ALL components shown above are present.
- that ALL mating components fit together.
- that there are no damaged components.
- that the system you have purchased is appropriate for your vehicle year, model and configuration.
- that the system will not interfere with any modifications previously installed or planned.
- that you have read and understand these instructions.

If you have any questions or are uncertain about any aspect of the installation of this system to your vehicle please contact your dealer before commencing installation.

Removal of Stock System:

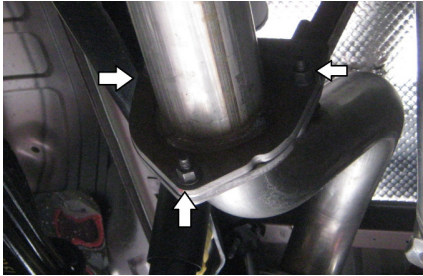


Figure 1

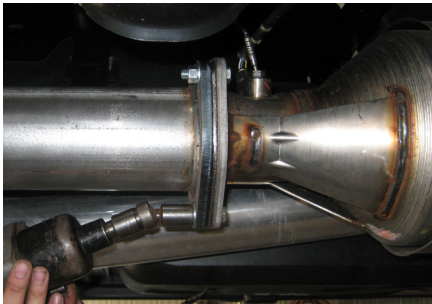


Figure 2



Figure 3



Figure 5



Figure 6

1. Apply penetrating lubricant liberally to all exhaust fasteners, hangers and rubber isolators.
2. Loosen the three nuts securing the extension pipe flange to the over-axle pipe. **Refer to Figure 1.**
3. Remove the factory over-axle/tail pipe.
4. Loosen the three nuts securing the extension pipe to the flange directly behind the exhaust filter and remove the extension pipe. **Refer to Figure 2.**
5. Disconnect all exhaust sensors at their connection points to the vehicle.
6. Remove the flange connecting the catalytic converter/diesel particulate filter (CAT/DPF) section of the exhaust to the downpipe.
7. Remove the exhaust hangers from the isolator mounts and remove the CAT/DPF section from the vehicle (this step will require two people, as the stock pipe is heavy).

Installation of MBRP Inc. Competition Exhaust:

1. Install the **Front Pipe** by inserting the hangers into the factory isolator mounts and connecting the flange to the downpipe using the **7/16" Hardware** provided. To allow for adjustability, do not fully tighten the hardware until Step 7. **Refer to Figure 3.**
2. The **Extension Pipe** is pre-cut for the 172.4" (crew cab, long box) wheelbase. If installing on a vehicle with a shorter wheelbase, cut the **Extension Pipe** to the appropriate length. **Refer to Figure 4.**

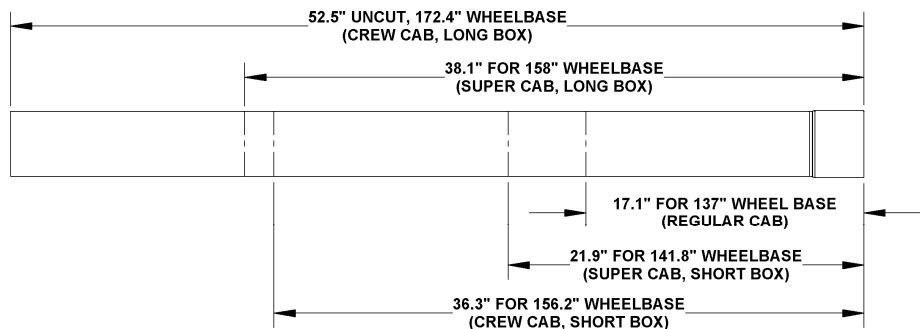


Figure 4

3. Install the **Extension Pipe** onto the **Front Pipe** using the **4" Saddle Clamp** provided. Do not fully tighten the clamp yet. **Refer to Figure 5.**
4. Install the **Muffler** onto the **Extension Pipe** using the **4" Saddle Clamp** provided. Insert the **4" Hanger Clamp** into the rearward rubber isolators to hold the back end of the **Muffler** in place. **Refer to Figure 6.**



Figure 7

5. Install the **Y-Pipe** into the **Muffler** outlet and secure it by hand tightening the **4" Hanger Clamp**. Refer to **Figure 7**.

6. Install the **Passenger-Side Tail Pipe** onto the **Y-Pipe**, inserting the hanger into the rearward factory rubber isolator. Rotate the **Y-Pipe** as needed to position the **Tail Pipe** correctly. Hand-tighten a **4" Clamp** at the connection point.

7. Place the rubber isolator of the **Hanger Kit** onto the hanger on the **Driver-Side Tail Pipe**.

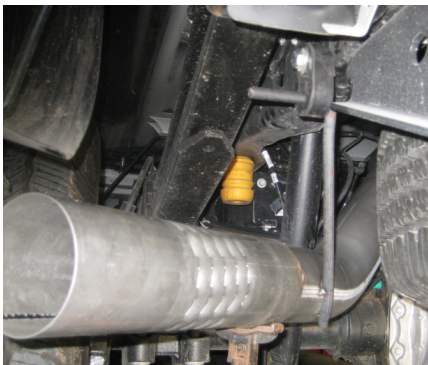


Figure 8

8. Install the **Driver-Side Tail Pipe** to the **Y-Pipe** and fasten the **Hanger Kit** to the vehicle frame using the hardware provided. Refer to **Figures 8 & 9** for the correct mounting hole location. Hand-tighten a **4" Clamp** at the **Y-Pipe** connection point.

9. Install an **Exhaust Tip** on each side using a 17mm wrench. Refer to **Figure 10**.

10. Align the exhaust as required and fully-tighten all clamps and fasteners.



Figure 9

11. Ensure that there is adequate clearance around the spare tire or any fuel and brake lines.

Congratulations! MBRP Competition Exhaust Systems is proud to be a part of your racing and competition success. We know you will enjoy your purchase.



Figure 10