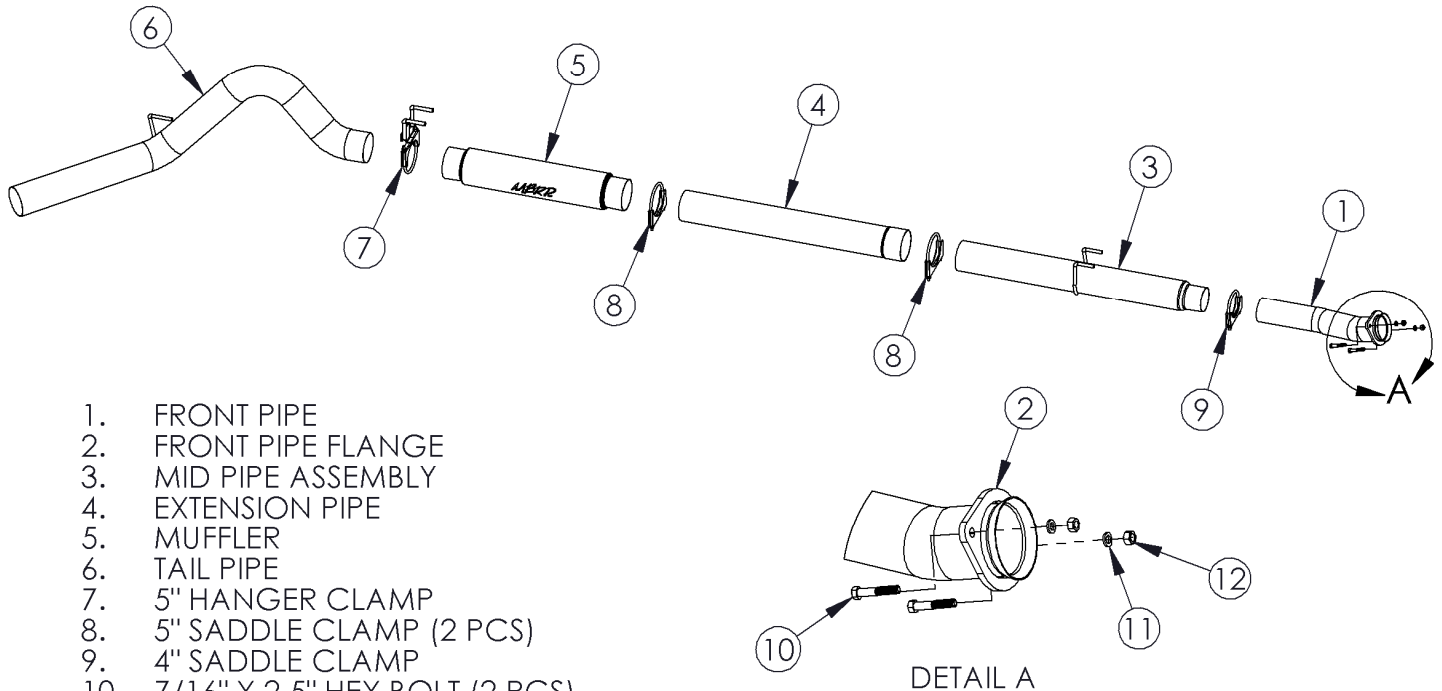


C6278AL

2011 FORD SUPER-DUTY 6.7L POWERSTROKE
5" COMPETITION EXHAUST



1. FRONT PIPE
2. FRONT PIPE FLANGE
3. MID PIPE ASSEMBLY
4. EXTENSION PIPE
5. MUFFLER
6. TAIL PIPE
7. 5" HANGER CLAMP
8. 5" SADDLE CLAMP (2 PCS)
9. 4" SADDLE CLAMP
10. 7/16" X 2.5" HEX BOLT (2 PCS)
11. 7/16" LOCK WASHER (2 PCS)
12. 7/16" HEX NUT (2 PCS)

FOR RACE/COMPETITION USE ONLY!

Installation of this product for highway or recreational use vehicles is prohibited by Federal law. This product's use is restricted to organized, amateur and professional racing events, limited to closed-course racing and open-course racing that is formally sanctioned by a recognized racing organization.

This system requires an aftermarket electronic programmer to work with the vehicle.

PLEASE READ BEFORE STARTING INSTALLATION

While MBRP Inc. has made every effort to ensure that all components of this system are of superior quality and properly packaged it is the installer's responsibility to ensure the following before removal of the factory exhaust:

- that ALL components shown above are present.
- that ALL mating components fit together.
- that there are no damaged components.
- that the system you have purchased is appropriate for your vehicle year, model and configuration.
- that the system will not interfere with any modifications previously installed or planned.
- that you have read and understand these instructions.

If you have any questions or are uncertain about any aspect of the installation of this system to your vehicle please contact your dealer before commencing installation.

Removal of Stock System:

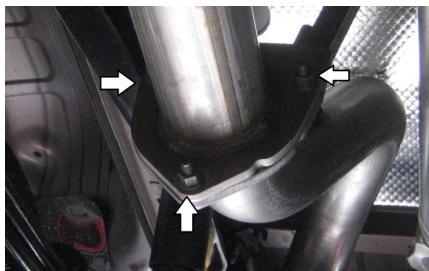


Figure 1

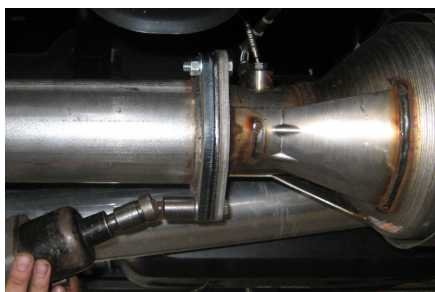


Figure 2



Figure 3



Figure 4



Figure 6

1. Apply penetrating lubricant liberally to all exhaust fasteners, hangers and rubber insulators.
2. Loosen the three nuts securing the extension pipe flange to the over-axle pipe. **Refer to Figure 1.**
3. Remove the factory over-axle/tail pipe.
4. Loosen the three nuts securing the extension pipe to the flange directly behind the exhaust filter and remove the extension pipe. **Refer to Figure 2.**
5. Disconnect all exhaust sensors at their connection points to the vehicle.
6. Remove the flange connecting the CAT/DPF section of the exhaust to the downpipe.
7. Remove the exhaust hangers from the isolator mounts and remove the CAT/DPF section from the vehicle (this step will require two people, as the stock pipe is heavy).

Installation of MBRP Inc. Competition Exhaust:

1. Install the **Front Pipe** by connecting the flange to the downpipe using the **7/16" Hardware** provided. **Refer to Figure 3.** To allow for adjustability, do not fully tighten the hardware until Step 6.
2. Install the **Mid Pipe** by inserting the hangers into the isolator mounts and fitting the reduced end onto the **Front Pipe**. Secure it using the **4" Saddle Clamp** provided. Do not fully tighten the clamp yet. **Refer to Figure 4.**
3. The **Extension Pipe** is pre-cut for the 172.4" (crew cab, long box) wheelbase. If installing on a vehicle with a shorter wheelbase, cut the **Extension Pipe** to the appropriate length (**Refer to Figure 5**). For the 137" wheelbase (regular cab), the **Extension Pipe** is not used.

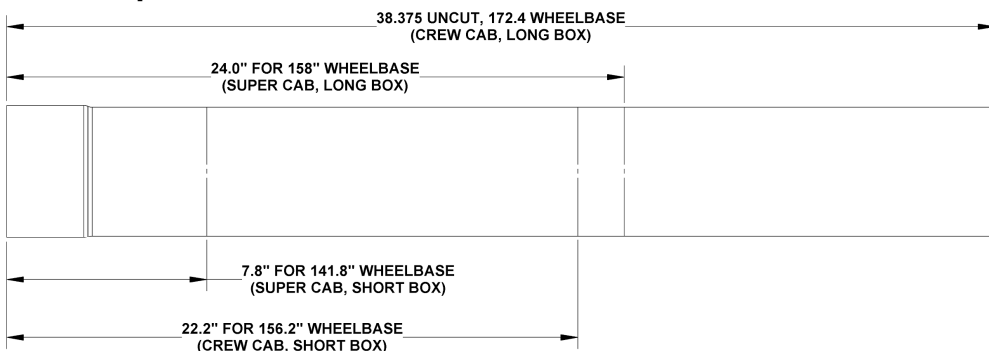


Figure 5

4. Install the **Extension Pipe** onto the **Mid Pipe** using one of the provided **5" Saddle Clamps**. Do not fully tighten the clamp yet.
5. Install the **Muffler** onto the **Extension Pipe** (or **Mid Pipe** for the 137" wheelbase) using a **5" Saddle Clamp**. Insert the **5" Hanger Clamp** into the rearward rubber isolators to hold the back end of the **Muffler** in place. **Refer to Figure 6.**
6. Install the **Tail Pipe** by inserting the hanger into the rear isolator mount and inserting the pipe into the **Muffler**.
7. Align the exhaust as needed and tighten all clamps and fasteners.

Congratulations! MBRP Competition Exhaust Systems is proud to be a part of your racing and competition success. We know you will enjoy your purchase.