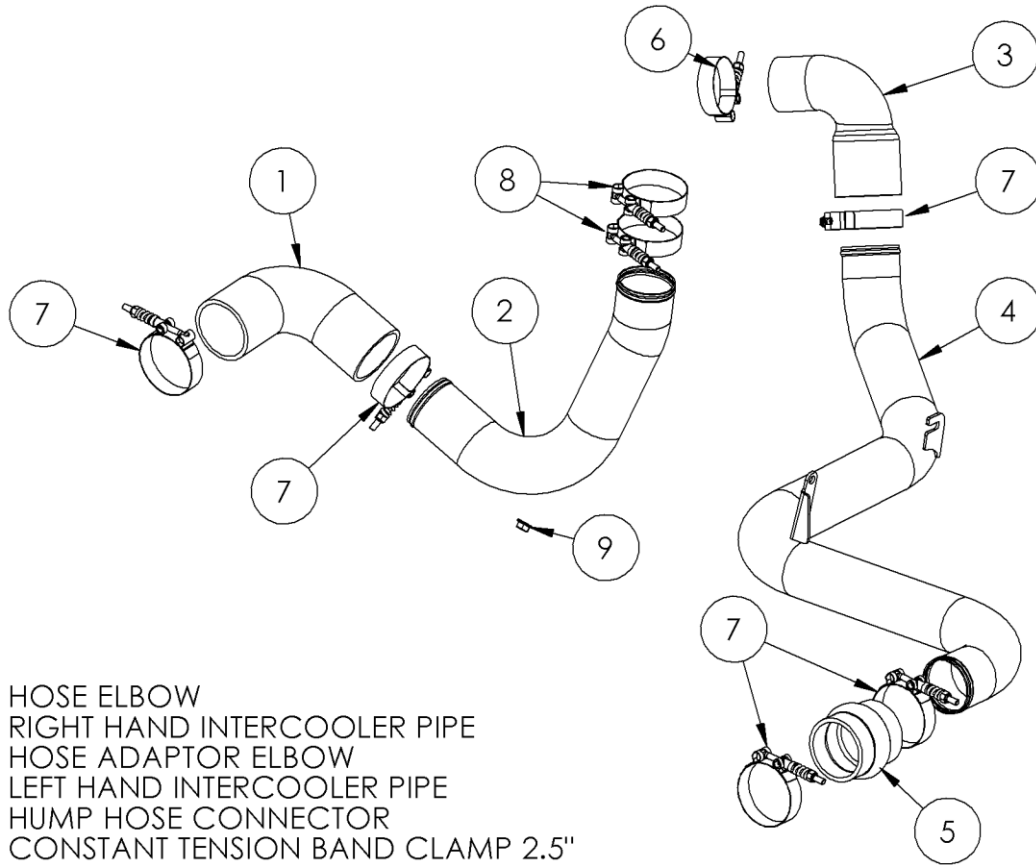


# IC2317

2013-15 FORD FOCUS ST  
2.5" INTERCOOLER PIPE KIT

**MBRP**  
INC.  
PERFORMANCE EXHAUST



1. HOSE ELBOW
2. RIGHT HAND INTERCOOLER PIPE
3. HOSE ADAPTOR ELBOW
4. LEFT HAND INTERCOOLER PIPE
5. HUMP HOSE CONNECTOR
6. CONSTANT TENSION BAND CLAMP 2.5"
7. CONSTANT TENSION BAND CLAMP 3" (7 PCS)
8. M8 FLANGE NUT

## PLEASE READ BEFORE STARTING INSTALLATION

While MBRP Inc. has made every effort to ensure that all the components of this kit are of superior quality and properly packaged, it is the installer's responsibility to ensure the following before removal of the factory components:

- that ALL components shown above are present.
- that ALL mating components fit together.
- that there are no damaged components.
- that the system you have purchased is appropriate for your vehicle year, model and configuration.
- that the system will not interfere with any modifications previously installed or planned.
- that you have read and understand these instructions.

If you have any questions or are uncertain about any aspect of the installation of this system to your vehicle please contact your dealer before commencing installation.

## 2013-15 Ford Focus ST

### Removal of Stock System:

1. Loosen the air charge hose clamp on the throttle body.  
**Refer to Figure 1.**



**Figure 1**

2. Remove the under car engine cover.  
**Refer to Figure 2.**



**Figure 2**

3. Remove the front lower valance panel (optional, but it gives easier access to the intercooler connections).



**Figure 3**

4. Remove the nut and bolt securing the hot side intercooler pipe.  
**Refer to Figures 3 and 4.**



**Figure 4**

5. Loosen the air charge hose clamp connections at the intercooler and the turbocharger.  
**Refer to Figures 5, 6 and 7.**



**Figure 5**



**Figure 6**

6. Remove both of the factory air charge pipes from the vehicle.



**Figure 7**

7. Remove the throttle body air charge hose from the factory adaptor for re-use.  
**Refer to Figure 8.**



**Figure 8**

**Installation of MBRP Inc. Intercooler Pipes:**

**Note: The hoses supplied are a tight fit to the pipes. Some silicone spray or other suitable lubricant is required for installation.**

1. Install the throttle body air charge hose onto the **Right Hand Intercooler Pipe**, using one **3" T-Bolt Clamp**. Place one **3" T-Bolt Clamp** on the throttle body air charge hose. Position the clamps so you can access them to tighten once the pipe is in place.

2. Place one **3" T-Bolt Clamp** over the intercooler outlet.

**Refer to Figure 9.**



**Figure 9**

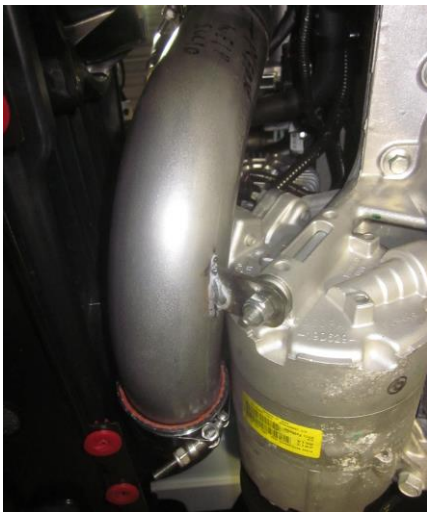
3. Position the **Right Hand Intercooler Pipe** in place. Place one **3" T-Bolt Clamp** over the **Right Hand Intercooler Pipe**. Carefully install the **Hose Elbow** onto the intercooler outlet and the **Right Hand Intercooler Pipe**. It is a very tight fit requiring some extra patience.

**Refer to Figure 10.**



**Figure 10**

4. Install the throttle body air charge hose connector onto the throttle body and the **3" T-Bolt Clamp** onto the **Hose Elbow**.



**Figure 11**

5. Install the **Right Hand Intercooler Pipe** bracket and the **M8 Flange Nut** onto the air conditioner compressor mounting stud and tighten both clamps on the **Hose Elbow**. Ensure the throttle body connection stays in place. The **Hose Elbow** may slightly contact the air conditioner compressor. Refer to **Figure 11**.



**Figure 12**

6. Place one **3 inch T-Bolt Clamp** and the **Hose Adaptor Elbow** onto the **Left Hand Intercooler Pipe** inlet. Place the **2.5 inch T-Bolt Clamp** onto the small end of the **Hose Adaptor Elbow**.

7. Place one **3 inch T-Bolt Clamp** over the other end of the **Left Hand Intercooler Pipe**.

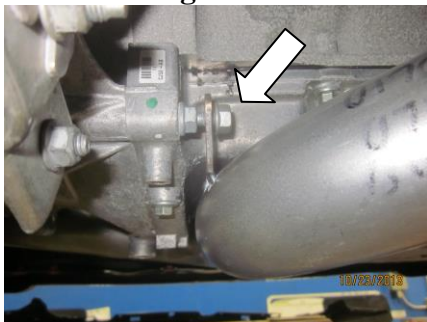
8. Place one **3 inch T-Bolt Clamp** and the **Hump Hose Connector** over the intercooler inlet and install the **Left Hand Intercooler Pipe** into the **Hump Hose Connector**.

Refer to **Figure 12**.



**Figure 13**

9. Install the **Hose Adaptor Elbow** onto the turbocharger outlet. Refer to **Figure 13**.



**Figure 14**

10. Install the retaining bolt and nut (removed in step 4) through the **Left Hand Intercooler Pipe** brackets.

Refer to **Figures 14 and 15**.

11. Align the **Left Hand Intercooler Pipe** with the oil pan recess and tighten the retaining hardware.

12. Tighten all T-bolt clamps.

13. Ensure there is proper clearance around all hoses and clamps.



**Figure 15**

14. Re-install the front lower valence panel (if removed) and the under car engine cover.

**Congratulations!** You are ready to begin experiencing the improved power and driving experience of your **MBRP Inc.** intercooler pipe upgrade. We know you will enjoy your purchase.