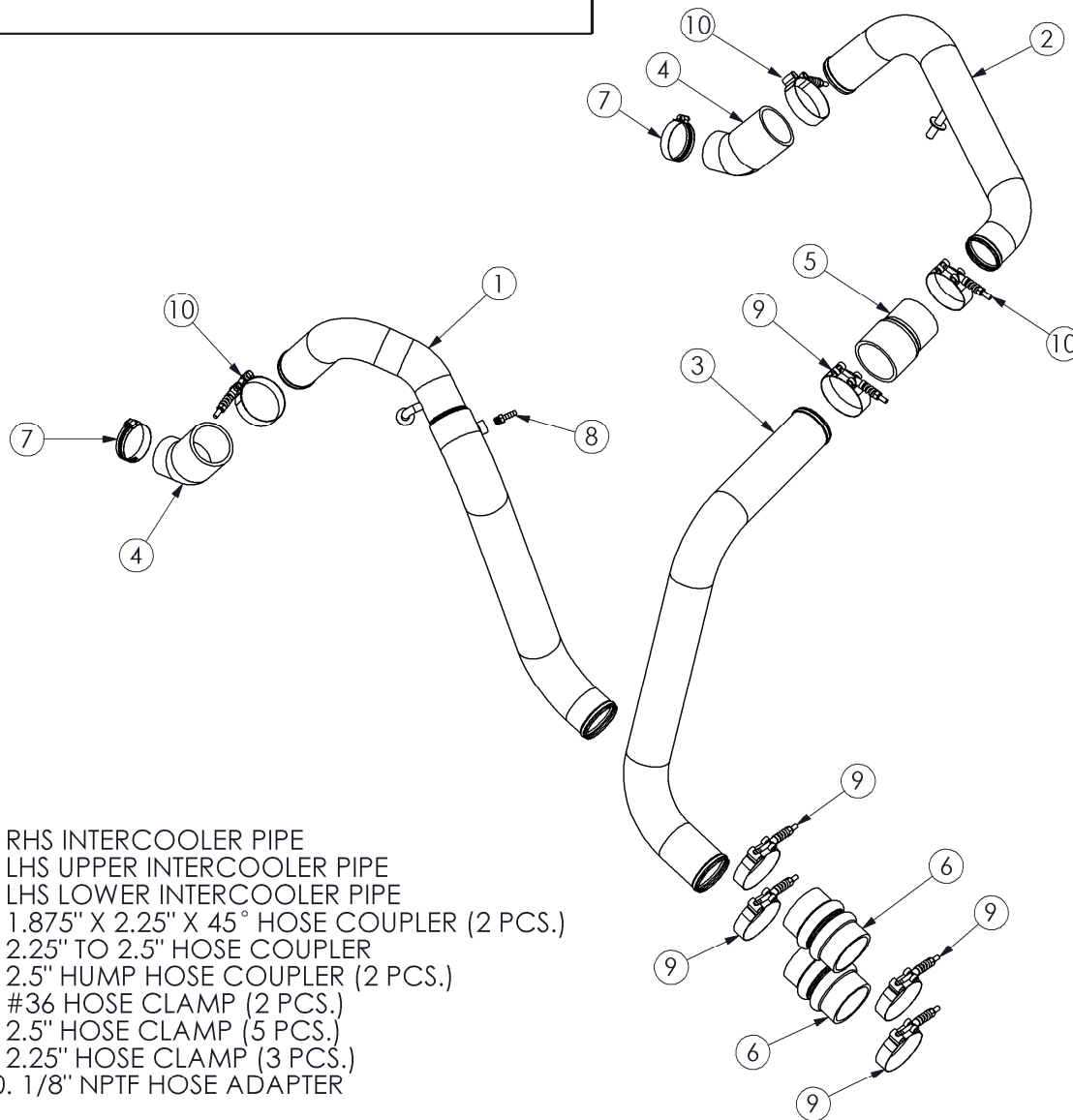


IC2649H

HOT-SIDE INTERCOOLER PIPE KIT
2015-2016 FORD 3.5L F150 ECOBOOST

MBRP Inc.
PERFORMANCE EXHAUST



1. RHS INTERCOOLER PIPE
2. LHS UPPER INTERCOOLER PIPE
3. LHS LOWER INTERCOOLER PIPE
4. 1.875" X 2.25" X 45° HOSE COUPLER (2 PCS.)
5. 2.25" TO 2.5" HOSE COUPLER
6. 2.5" HUMP HOSE COUPLER (2 PCS.)
7. #36 HOSE CLAMP (2 PCS.)
8. 2.5" HOSE CLAMP (5 PCS.)
9. 2.25" HOSE CLAMP (3 PCS.)
10. 1/8" NPTF HOSE ADAPTER

PLEASE READ BEFORE STARTING INSTALLATION

While MBRP Inc. has made every effort to ensure that all components of this system are of superior quality and properly packaged, it is the installer's responsibility to ensure the following before removal of the factory exhaust:

- that ALL components shown above are present.
- that ALL mating components fit together.
- that there are no damaged components.
- that the system you have purchased is appropriate for your vehicle year, model and configuration.
- that the system will not interfere with any modifications previously installed or planned.
- that you have read and understand these instructions.

If you have any questions or are uncertain about any aspect of the installation of this system to your vehicle please contact your dealer before commencing installation.

Removal of Stock Pipes:

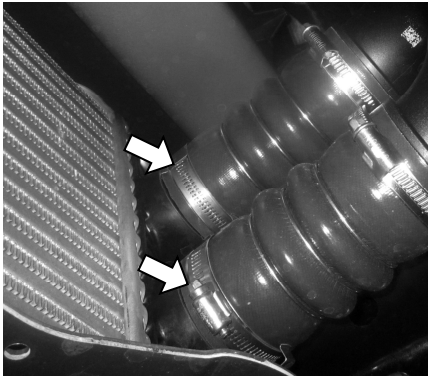


Figure 1

1. Remove the “Y” section of the air intake by loosening the hose clamps from the rubber connections.
2. Remove the engine cover.
3. Loosen the hose clamps and remove the hose couplers from both intercooler inlets. **Refer to Figure 1**
4. Remove the vacuum line from the passenger-side (RHS) stock intercooler pipe and the passenger-side intake pipe.



Figure 2

5. Loosen the hose clamp securing the passenger-side (RHS) intercooler pipe to the turbo. Remove the pipe from the vehicle. **Refer to Figure 2**
6. Loosen the hose clamp securing the driver-side (LHS) intercooler pipe to the turbo. Remove the pipe from the vehicle.

Installation of MBRP Inc. Intercooler Pipes:

NOTE: ENSURE THAT THE INSIDE OF THE INTERCOOLER PIPES ARE CLEAN BEFORE INSTALLATION.

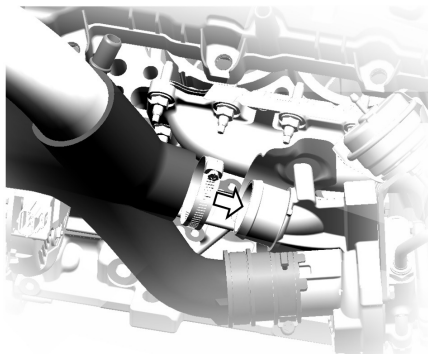


Figure 3

1. Install a **1.875” X 2.25” X 45° Hose Coupler** onto the driver-side turbo outlet using a **#36 Hose Clamp**. Do not tighten the clamp yet. **Refer to Figure 3**
2. Insert the **LHS Upper Intercooler Pipe** into the **1.875” X 2.25” X 45° Hose Coupler**, securing it loosely using a **2.25” Hose Clamp**. **Refer to Figure 4**



Figure 4

3. Position the **LHS Upper Intercooler Pipe** as necessary to insert the support post into the OEM rubber grommet.
4. Install the **2.25” to 2.5” Hose Coupler** onto the bottom end of the **LHS Upper Intercooler Pipe**, securing it using a **2.25” Hose Clamp**. **Refer to Figure 5**

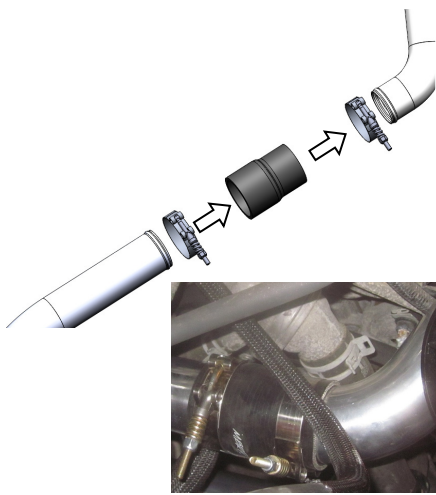


Figure 5

5. Install one of the **2.5" Hump Hose Couplers** onto the bottom inlet of the intercooler, securing it using a **2.5" Hose Clamp**.

6. Insert the top end of the **LHS Lower Intercooler Pipe** into the **2.25" to 2.5" Hose Coupler** with a **2.5" Hose Clamp** (Refer to **Figure 5**), and the bottom end into the **2.5" X 4" Hump Hose Coupler** with another **2.5" Hose Clamp**. Do not fully tighten the clamps yet.

7. Install a **1.875" X 2.25" X 45° Hose Coupler** onto the passenger-side turbo outlet using a **#36 Hose Clamp**. Do not tighten the clamp yet. Refer to **Figure 6**

8. Install the other **2.5" Hump Hose Coupler** onto the upper inlet of the intercooler, securing it using a **2.5" Hose Clamp**.



Figure 6

9. While holding the stock intake tube up and towards the RHS of the vehicle, position the **RHS Intercooler Pipe** as necessary to first insert the bottom end into the **2.5" Hump Hose Coupler** (securing it loosely using a **2.5" Hose Clamp**), and then the upper end into the **1.875" X 2.25" X 45° Hose Coupler** (with the **2.25" Hose Clamp***) while fitting the support post into the OEM rubber grommet. When moving the pipe into position, take care not to break the vacuum line fitting on the intake tube.

*The **2.25" Hose Clamp** should be placed loosely over the **1.875" X 2.25" X 45° Hose Coupler** before inserting the **RHS Intercooler Pipe** into it.

10. Wrap the threads of the **1/8" NPTF HOSE ADAPTOR** with Teflon tape and install it into the threaded bung on the **RHS Intercooler Pipe**. Refer to **Figure 7**

11. Install the previously-removed vacuum lines onto the **1/8" NPTF HOSE ADAPTOR** and the passenger-side stock intake pipe.

12. Position the **LHS and RHS Intercooler Pipes** to obtain the best fit and maximize clearances, and then fully tighten all clamps.

13. Replace the "Y" from the air intake and the engine cover. Trim the engine cover as needed to provide clearance to the **LHS and RHS Intercooler Pipes**.

14. Verify that there is adequate clearance around all hoses, wiring, covers, etc. If not, relocate or adjust.

Congratulations! You are ready to begin experiencing the improved power and driving excitement of your MBRP Inc. intercooler pipe upgrade. We know you will enjoy your purchase.

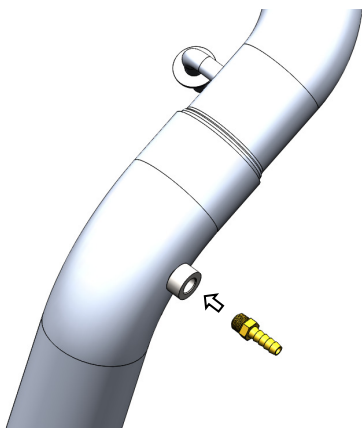


Figure 7