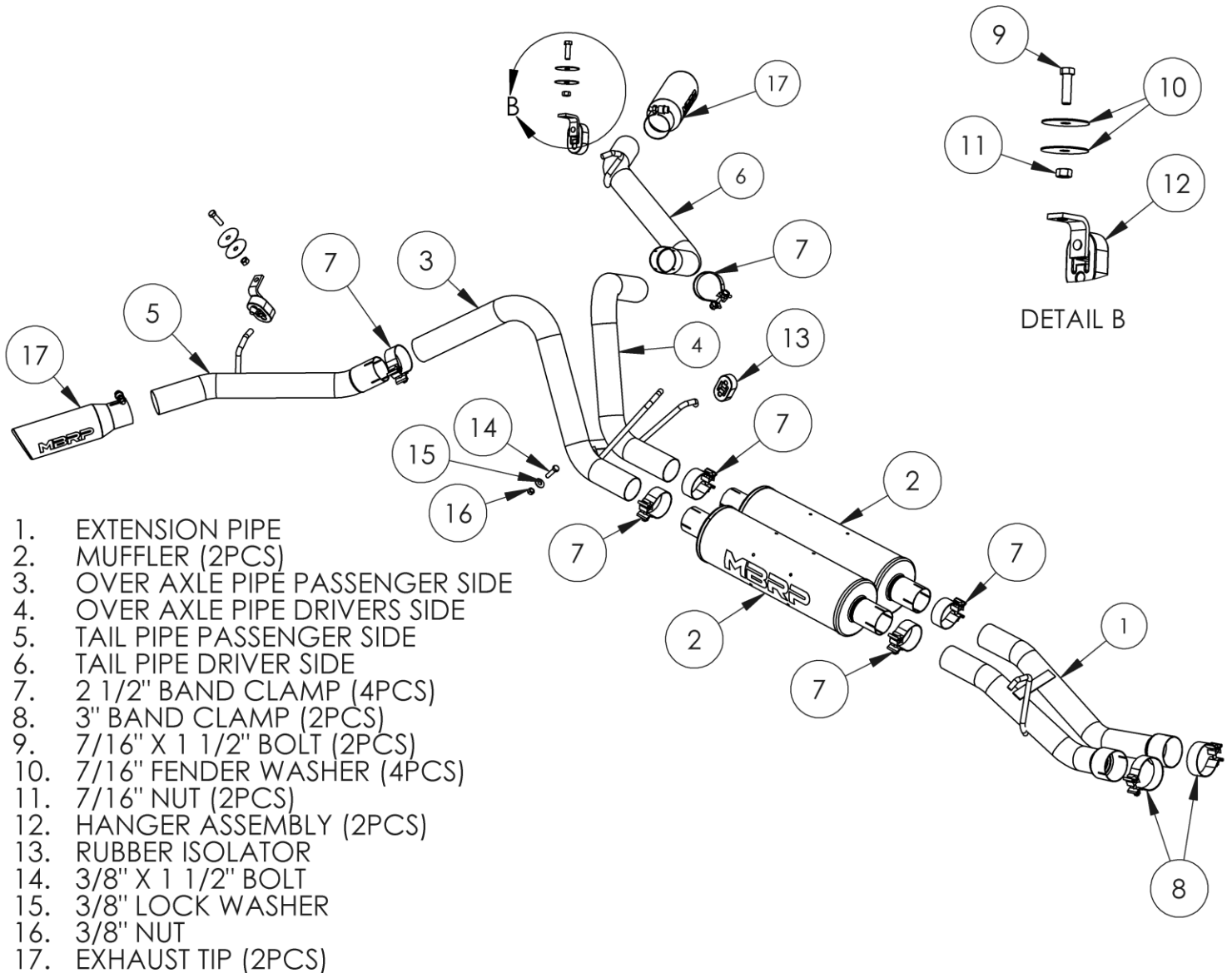


S5010

2001-2006 CHEV/GMC 2500 HD
2007 CHEV/GMC 2500 HD CLASSIC
6.0L, EXTENDED CAB-SHORT BOX, CAT-
BACK, 2.5" DUAL SPLIT SIDE

MBRP®



PLEASE READ BEFORE STARTING INSTALLATION

While MBRP has made every effort to ensure that all components of this system are of superior quality and properly packaged, it is the installer's responsibility to ensure the following before removal of the factory exhaust:

- that ALL components shown above are present.
- that ALL mating components fit together.
- that there are no damaged components.
- that the system you have purchased is appropriate for your vehicle year, model and configuration.
- that the system will not interfere with any modifications previously installed or planned.
- that you have read and understand these instructions.

If you have any questions or are uncertain about any aspect of the installation of this system to your vehicle please contact your dealer before commencing installation.



Removal of stock system:

1. Measure and mark the pipe closest to the frame 14" from the front of the muffler. For the pipe closest to the drive shaft measure and mark the pipe 17" from the front of the muffler. The pipes now need to be cut square where the pipes were marked.
2. Apply a penetrating lubricant liberally to all exhaust fasteners, hangers and rubber insulators.
3. Remove the hangers from the rubber insulators and remove the exhaust from the vehicle. If a hoist or hydraulic lift is not being used the tail pipe may need to be cut to clear the rear axle.

Installation of MBRP Performance Exhaust:

1. Loosely attach the **Extension Pipe** with the **3" Band Clamps** where the pipes were cut previously and place the hanger into the factory rubber insulator located on the frame.
2. Install the **Mufflers** onto **Extension Pipe** with **2.5" Band Clamps**.
3. Apply some lubricant to the factory rubber insulator located above the rear of the mufflers and slide it over the stop towards the passenger side of the vehicle. Apply some lubricant to the rubber insulator provided with the system and slide it over the factory hanger. Position it where the factory rubber insulator was located.
4. Loosely install the **Driver-Side Over-Axle Pipe** connecting it to the **Muffler** closest to the drive shaft with a **2.5" Band Clamp**. Install the hanger into the rubber insulator installed in the previous instruction.
5. Feed the **Passenger Side Over-Axle Pipe** over the axle and install it loosely into the **Muffler** with a **2.5" Band Clamp**. Install the hanger into the factory rubber insulator, moved in the previous instruction.
6. Line up the holes in the tabs on the **Over-Axle Pipes** and loosely attach using the **3/8" Hardware** provided.
7. Feed the expanded end of the **Driver-Side Tail Pipe** from the rear of the vehicle over the axle, around the outside of the shock absorber and connect it to the **Driver-Side Over-Axle Pipe**.
8. Move the **Driver-side tail pipe** into approximate position. Using the factory hole provided in the frame located directly above the tail pipe hanger, attach the **Hanger Assembly** provided using the supplied hardware.
9. Feed the expanded end of the **Passenger-Side Tail Pipe** from the rear of the vehicle over the axle and loosely connect it to the **Passenger-Side Over-Axle pipe**.
10. Move the **Passenger-Side Tail Pipe** into approximate position. Using the factory hole provided in the frame located directly above the tail pipe hanger, attach the **Hanger Assembly** provided using the supplied hardware.
11. Carefully align the system and tips. Align the edge of each band clamp with the edge of the joint it is connecting. Tighten all hardware and clamps, starting at the front and working rearward to secure the system. Check along the full length of the exhaust system to ensure there is adequate clearance for fuel lines, vent lines, brake lines, frame, bodywork, suspension and any wiring, etc. If there is any interference detected, relocate or adjust to provide adequate clearance. Ensure all clamp connections are secure and components are unable to rotate or slide. Band clamps require approximately 45 lb-ft (60 N-m) of torque. Verify clearances, system security and band clamp torque after 30-60 miles (50-100 km) of driving.

Congratulations! You are ready to begin experiencing the improved power, sound and driving experience of your **MBRP** Performance Exhaust. We know you will enjoy your purchase!