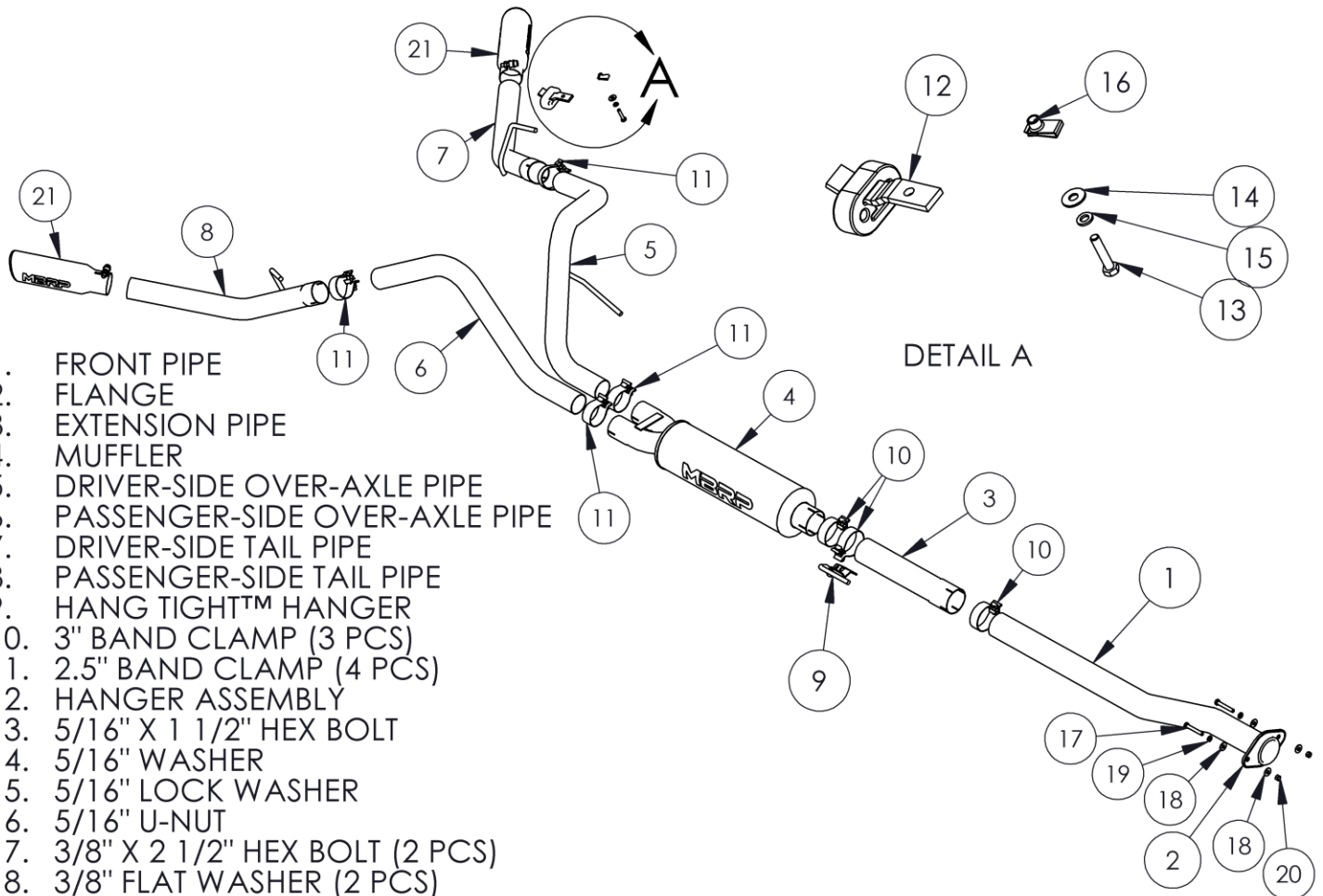


S5238

2011-2014 FORD F150,
REGULAR CAB (6.5' & 8' BOX)/EXTENDED CAB
(NOT 8' BOX)/CREW CAB,
3.5L ECOBOOST, CAT-BACK, 2.5" DUAL SIDE EXIT

MBRP®



1. FRONT PIPE
2. FLANGE
3. EXTENSION PIPE
4. MUFFLER
5. DRIVER-SIDE OVER-AXLE PIPE
6. PASSENGER-SIDE OVER-AXLE PIPE
7. DRIVER-SIDE TAIL PIPE
8. PASSENGER-SIDE TAIL PIPE
9. HANG TIGHT™ HANGER
10. 3" BAND CLAMP (3 PCS)
11. 2.5" BAND CLAMP (4 PCS)
12. HANGER ASSEMBLY
13. 5/16" X 1 1/2" HEX BOLT
14. 5/16" WASHER
15. 5/16" LOCK WASHER
16. 5/16" U-NUT
17. 3/8" X 2 1/2" HEX BOLT (2 PCS)
18. 3/8" FLAT WASHER (2 PCS)
19. 3/8" LOCK WASHER (2 PCS)
20. 3/8" HEX NUT (2 PCS)
21. EXHAUST TIP (2 PCS)

NOTE: SADDLE CLAMPS USED IN ALUMINIZED SYSTEM

PLEASE READ BEFORE STARTING INSTALLATION

While MBRP has made every effort to ensure that all components of this system are of superior quality and properly packaged, it is the installer's responsibility to ensure the following before removal of the factory exhaust:

- that ALL components shown above are present.
- that ALL mating components fit together.
- that there are no damaged components.
- that the system you have purchased is appropriate for your vehicle year, model and configuration.
- that the system will not interfere with any modifications previously installed or planned.
- that you have read and understand these instructions.

If you have any questions or are uncertain about any aspect of the installation of this system to your vehicle please contact your dealer before commencing installation.

MBRP

Removal of Stock System:



Figure 1

1. Apply a penetrating lubricant liberally to all exhaust fasteners, hangers and rubber insulators.

2. Loosen the flange located behind the “Y” pipe.

Refer to Figure 1.

3. Loosen the clamp located in front of the muffler.

Refer to Figure 2.



Figure 2

4. Remove the hangers from the rubber insulators and remove the exhaust from the vehicle. If a hoist or hydraulic lift is not being used the tail pipe may need to be cut to clear the rear axle.

Refer to Figure 3.

Installation of MBRP Performance Exhaust:

1. Install the **Flange** onto the **Front Pipe**.

2. Install the **Front Pipe** to the existing flange using the fasteners provided.

Refer to Figure 4.



Figure 3

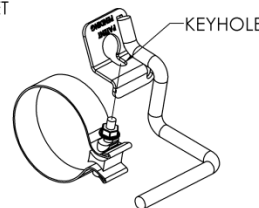
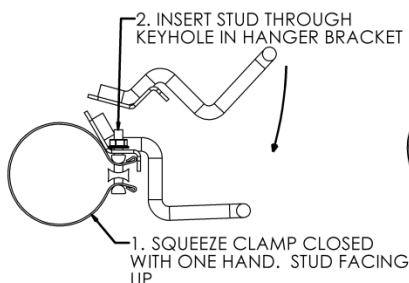
Note: The **Extension Pipe** will not be required on some models.

Model	Bed Length	Wheelbase	Extension Pipe Required	Shortening Front Pipe Required
Regular Cab	6.5'	126"	No	19"
Regular Cab	8'	145"	No	No
SuperCab	6.5'	145"	No	No
SuperCab	5.5'	133"	No	11"
SuperCrew	6.5'	157"	Yes	No
SuperCrew	5.5'	145"	No	No

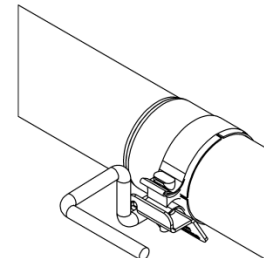


Figure 4

3. Install the **Hang Tight™ Hanger** onto a **3.0" Band Clamp** using the procedure shown below. (**409 Stainless Steel systems only, Hang Tight™ Hanger not exactly as shown**)



3. ROTATE HANGER BRACKET TO SEAT THREADED STUD IN SLOT. BE SURE THE NUT IS ABOVE THE BRACKET



MBRP



Figure 5

4. Slide the **3" Clamp** over the **Front Pipe** and install the **Extension Pipe** onto the **Front Pipe**. Install the **Hang Tight™ Hanger Assembly** loosely to the **Extension Pipe** (or **Front Pipe** if the **Extension Pipe** is not required) and place the hanger into the foremost existing rubber insulator. **Refer to Figure 5.**



Figure 6

5. Slide the **Muffler** onto the **Extension Pipe** or **Front Pipe** as required. **Refer to Figure 6.**

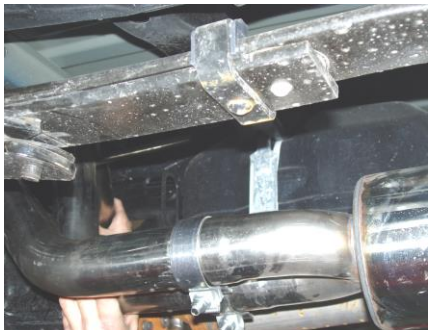


Figure 7

6. Loosely install the **Driver-Side Over-Axle Pipe** to the outlet closest to the drive shaft. Install the hanger into the rubber insulator located above the **Muffler** outlets. Install the **Passenger-Side Over-Axle Pipe** into the remaining outlet. **Refer to Figure 7.**



Figure 8

7. Attach the expanded end of the **Driver-Side Tail Pipe** connect it to the **Driver-Side Over-Axle Pipe** using a **2 1/2" Clamp**. Note: Some lines will have to be relocated and secured away from the exhaust. **Refer to Figure 8 & 9.**

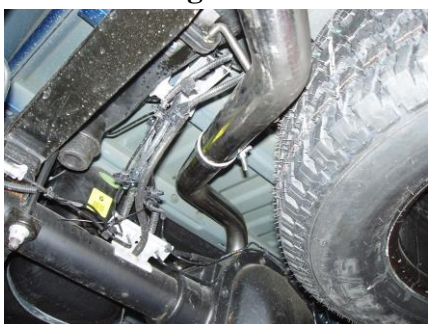


Figure 9

8. Move the **Driver Side Tail Pipe** into approximate position. Directly above the tail pipe hanger on the bottom of the frame there will be a square hole with a round hole beside it. Slide the **5/16" U-Nut** provided into the square hole, towards the round hole with the threaded part inside the frame so that the frame is sandwiched by the **5/16" U-Nut**. Attach the **Hanger Assembly** provided using the **5/16"** hardware supplied. Slide the **Driver-Side Tail Pipe** hanger into the **Hanger Assembly**. **Refer to Figure 8 & 9.**

MBRP



Figure 11

9. Feed the expanded end of the **Passenger-Side Tail Pipe** from the rear of the vehicle over the axle and loosely connect it to the **Passenger-Side Over-Axle Pipe**. Slide the **Passenger-Side Tail Pipe** hanger into the factory rubber insulator. **Refer to Figure 10.**
10. Install and adjust the **Exhaust Tips** to suit. Tighten the lock bolt on the **Exhaust Tip**.
11. Align the exhaust as required. Starting at the front of the exhaust tighten all clamps and connections.
12. Check along the whole length of the exhaust system to ensure that there is adequate clearance around the spare tire, fuel and brake lines or any wiring. If any interference is detected relocate or adjust.



Congratulations! You are ready to begin experiencing the improved power, sound and driving excitement of your **MBRP** performance exhaust system. We know you will enjoy your purchase.