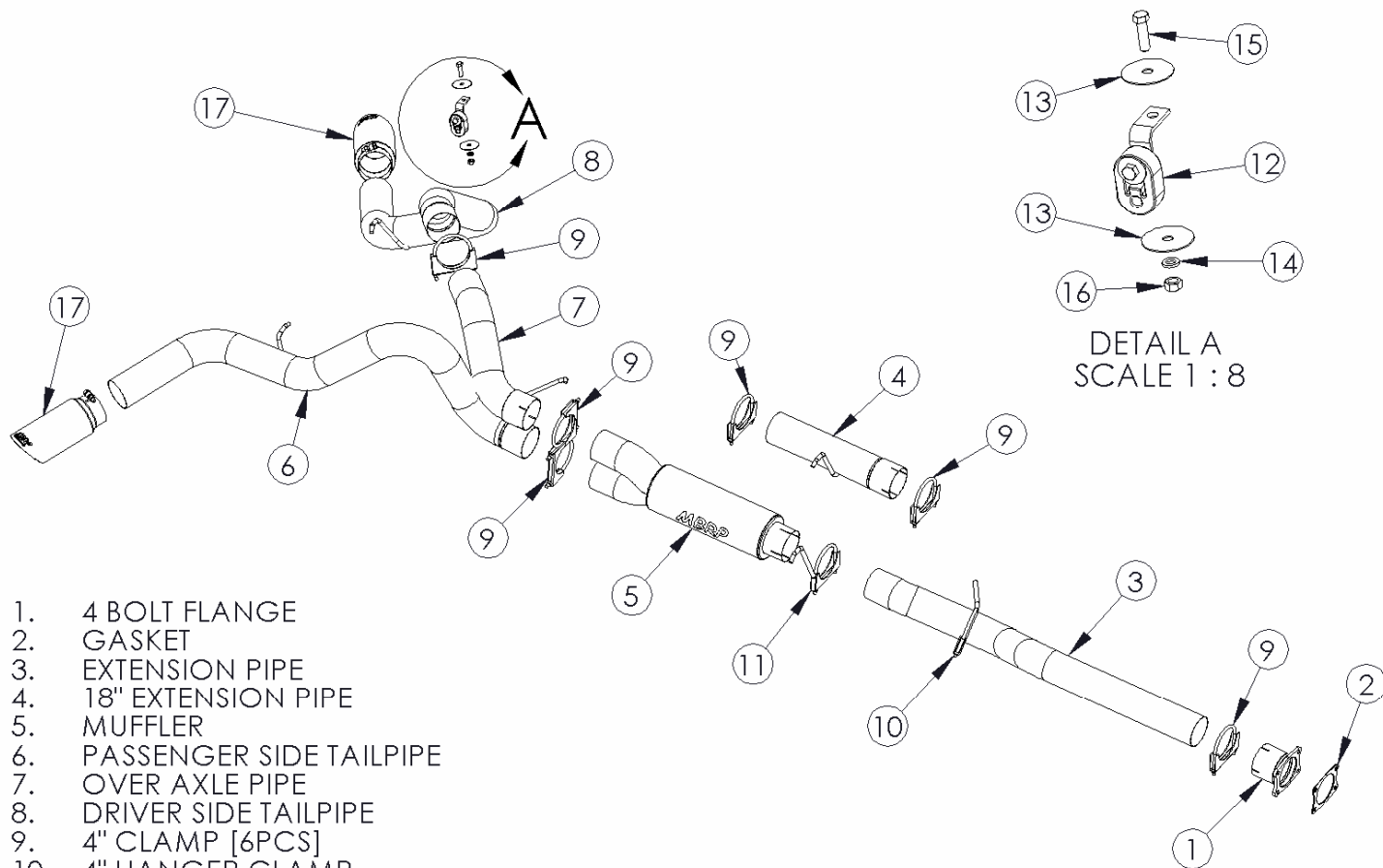


S6002
01-05 DURAMAX CAT BACK 4" COOL
DUALS™

MBRP
INC.

PERFORMANCE EXHAUST



DETAIL A
SCALE 1 : 8

1. 4 BOLT FLANGE
2. GASKET
3. EXTENSION PIPE
4. 18" EXTENSION PIPE
5. MUFFLER
6. PASSENGER SIDE TAILPIPE
7. OVER AXLE PIPE
8. DRIVER SIDE TAILPIPE
9. 4" CLAMP [6PCS]
10. 4" HANGER CLAMP
11. 4" HANGER CLAMP
12. HANGER ASSEMBLY
13. 7/16" FENDER WASHER [2 PCS]
14. 7/16" LOCKWASHER
15. 7/16"x1.5" BOLT
16. 7/16" HEX NUT
17. STAINLESS STEEL TIP [2 PCS]

PLEASE READ BEFORE STARTING INSTALATION

While MBRP Inc. has made every effort to ensure that all components of this system are of superior quality and properly packaged it is the installer's responsibility to ensure the following before removal of the factory exhaust:

- that ALL components shown above are present.
- that ALL mating components fit together.
- that there are no damaged components.
- that the system you have purchased is appropriate for your vehicle year, model and configuration.
- that the system will not interfere with any modifications previously installed or planned.
- that you have read and understand these instructions.

If you have any questions or are uncertain about any aspect of the installation of this system to your vehicle please contact your dealer before commencing installation.

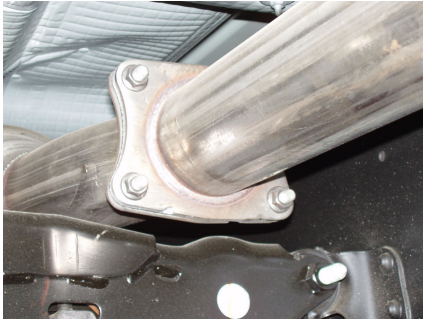


Figure 1



Figure 2



Figure 3



Figure 4

Removal of Stock System:

1. Apply penetrating lubricant liberally to all exhaust fasteners, hangers and rubber insulators.
2. Using a 15mm socket or wrench, disconnect the factory exhaust system at the four bolt flange located behind the catalytic converter. If the vehicle is not equipped with a catalytic converter disconnect the four bolt flange located approximately under the passenger side seat. **See Figure 1. Do not discard the four bolt flange nuts as they are required for the installation.**
3. Remove the exhaust system from the rubber insulators and remove from under the vehicle. If a hoist is not available for use it may be necessary to cut the tail pipe behind the muffler for removal of the system.

Installation of MBRP Inc. Performance Exhaust:

1. Place the **Gasket** provided over the studs located on the factory four bolt flange. Attach the **4 Bolt Flange** to the four bolt flange using the hardware previously removed. **See Figure 2.**
2. Install the **Extension Pipe** into the **4 Bolt Flange** placing the bend around and under the cross member. **See Figure 3.** The **Extension Pipe** does not require cutting to fit Crew Cab trucks. For Extended Cab trucks, approximately 9 ½" needs to be cut off the end with the shortest straight section of pipe. (**Installation tip:** Temporarily hang the **Muffler** and the **Passenger Side Tail Pipe** in place and measure to the four bolt flange to verify length required).
3. Position **Extension Pipe** as shown and loosely install the **Hanger Clamp** with the shortest hanger. **See Figure 4.** This will support the **Extension Pipe** during the **Muffler** installation.



Figure 5

4. Crew Cab & Extended Cab long box trucks require the use of the **18" Extension Pipe** provided. This is to be positioned between the **Muffler** and the **Extension Pipe**. See **Figure 5**. The **18" Extension Pipe** is not required with short box trucks.

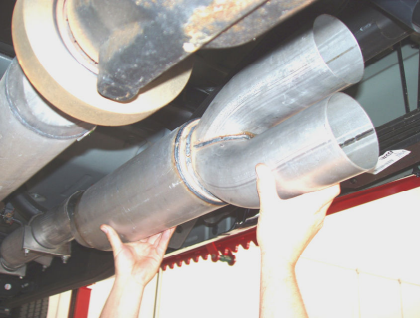


Figure 6

5. Install the **Muffler** onto the **Extension Pipe**. The **Muffler** outlets will be positioned vertically when installed. See **Figure 6**.

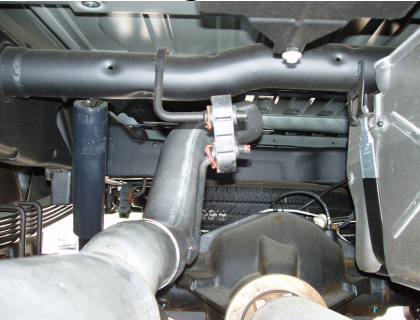


Figure 7

6. Install the **Over Axle Pipe** onto the top outlet of the **Muffler** and install the hanger into the OEM rubber hanger located above the **Muffler**. Adjust for maximum axle clearance. See **Figure 7**.



Figure 8

7. Install the **Driver's Side Tailpipe** by feeding it around the outside of the shock absorber and connecting it to the **Over Axle Pipe**. Adjust for maximum clearance around shock absorber. See **Figure 8**.



Figure 9

8. Using the factory hole located in the frame, found directly above the **Driver's Side Tailpipe** hanger, attach the **Hanger Assembly** provided using the supplied hardware. See **Figure 9**. Hang the **Driver's Side Tailpipe** from the installed **Hanger Assembly**.



Figure 10

9. Install the **Passenger Side Tailpipe** from the rear of the truck, over the axle and attach to the lower outlet of the **Muffler**. Install the tailpipe hanger into the OEM hanger and adjust for maximum axle clearance to complete. **See Figure 10.**
10. Install remaining **Clamps** around pipes as shown in the opening diagram. Adjust **Tailpipes** and check along the whole length of the exhaust system to ensure that there is adequate clearance around the spare tire, fuel and break lines or any wiring. If any interference is detected relocate or adjust.

11. Make sure the exhaust is in the place before tightening clamps. Start at the front of the exhaust system and begin tightening all connections.
12. Install and adjust **Tips** to suit. Using a 17mm wrench tighten lock bolt located on each **Tip**.



Congratulations! You are ready to begin experiencing the improved power, sound and driving excitement of your MBRP Inc. performance exhaust system. We know you will enjoy your purchase.