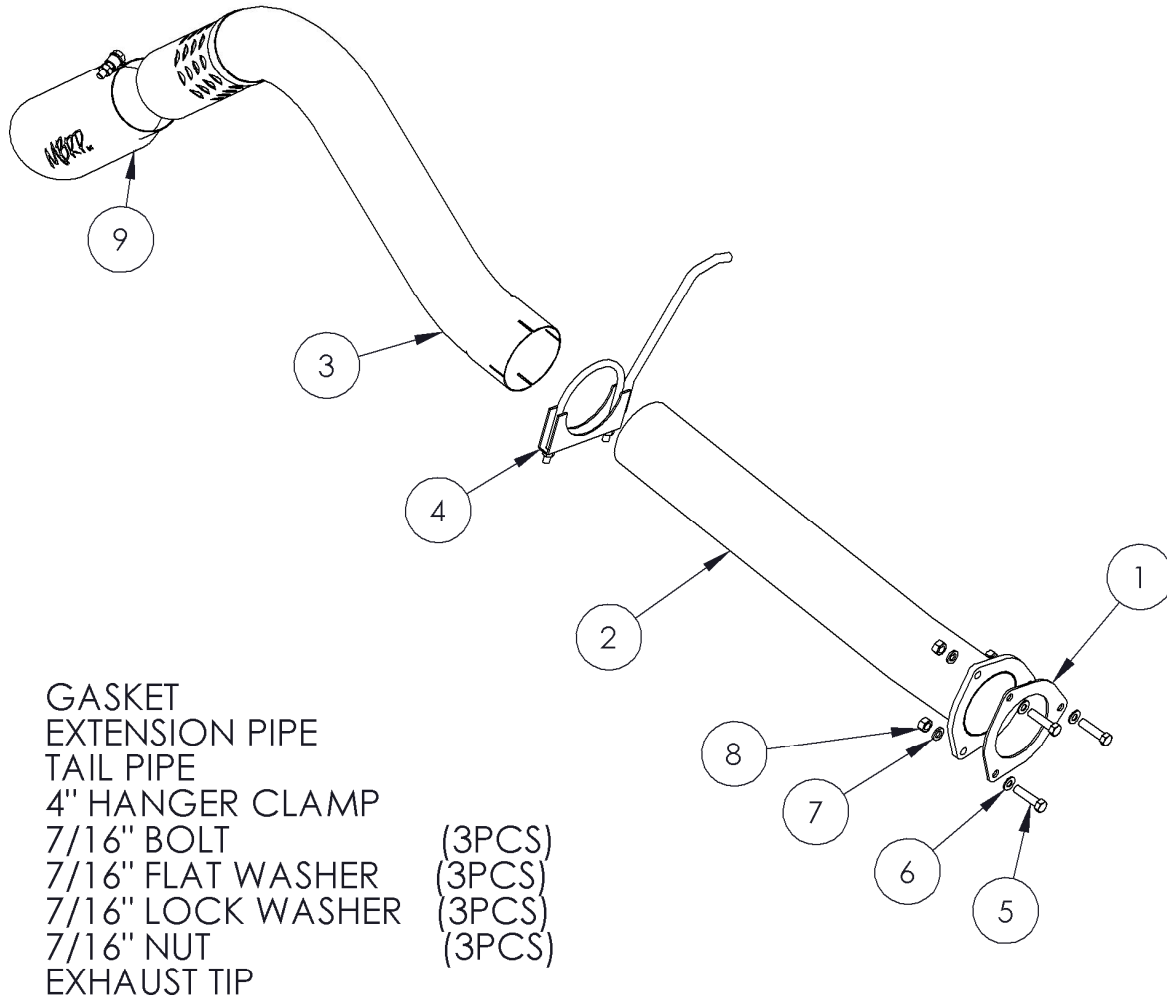


# S6026TD

07-10 CHEVY/GMC, 2500/3500 DURAMAX,  
PARTICULATE FILTER BACK, 4" SINGLE SIDE



1. GASKET
2. EXTENSION PIPE
3. TAIL PIPE
4. 4" HANGER CLAMP
5. 7/16" BOLT (3PCS)
6. 7/16" FLAT WASHER (3PCS)
7. 7/16" LOCK WASHER (3PCS)
8. 7/16" NUT (3PCS)
9. EXHAUST TIP

## PLEASE READ BEFORE STARTING INSTALLATION

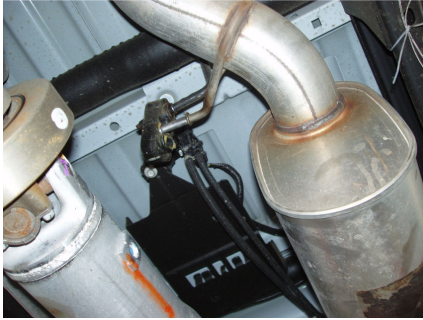
While MBRP Inc. has made every effort to ensure that all components of this system are of superior quality and properly packaged, it is the installer's responsibility to ensure the following before removal of the factory exhaust:

- that ALL components shown above are present.
- that ALL mating components fit together.
- that there are no damaged components.
- that the system you have purchased is appropriate for your vehicle year, model and configuration.
- that the system will not interfere with any modifications previously installed or planned.
- that you have read and understand these instructions.

If you have any questions or are uncertain about any aspect of the installation of this system to your vehicle please contact your dealer before commencing installation.



### **Removal of Stock System:**



**Figure 1**

1. Apply a penetrating lubricant liberally to all exhaust fasteners, hangers and rubber isolators.



**Figure 2**

2. Remove the factory tail pipe assembly from the factory rubber isolators. **Refer to Figures 1 and 2.**



**Figure 3**

3. Cut the factory tail pipe as shown and remove the rear section. **Refer to Figure 3.**



**Figure 4**

4. Remove the three nuts at the muffer inlet flange and remove the muffer. **Refer to Figure 4.**

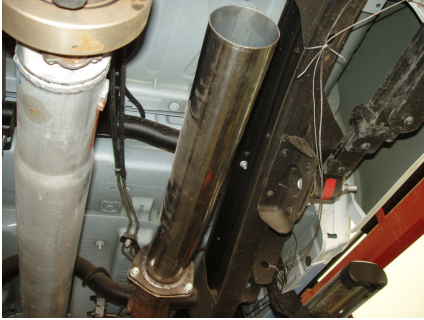


## Installation of MBRP Inc. Performance Exhaust:



**Figure 5**

Note: This exhaust is intended to be used on a lifted vehicle with the spare tire removed.



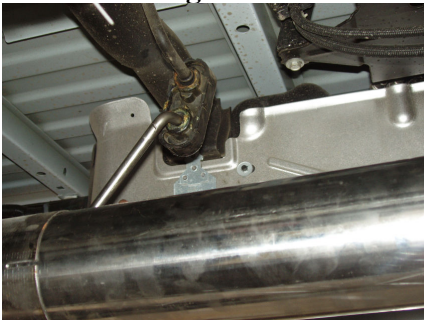
**Figure 6**

1. Install the three supplied **7/16" Bolts** in the existing flange and place the supplied **Gasket** over the bolts. **Refer to Figure 5.**
2. Install the **Extension Pipe** onto the flange. There is a slight bend in the **Extension Pipe**. The inside of this bend must face the driveshaft. If the outlet of the **Extension Pipe** angles slightly towards the driveshaft you have installed it correctly. Failure to install this pipe correctly will result in the **Tail Pipe** not fitting properly. Secure with the three supplied **7/16" Flat Washers**, three **7/16" Lock Washers** and three **7/16" Nuts**. **Refer to Figure 6.**



**Figure 7**

3. Slide the **4" Clamp** over the outlet of the **Extension Pipe**. Install the **Tail Pipe** from the rear of the truck over the axle and slide on to the **Extension Pipe**. Install the **Tail Pipe** hangers into the factory rubber isolators. **Refer to Figures 7 & 8.**



**Figure 8**

4. Loosely install the supplied **Exhaust Tip** and align the **Tail Pipe** approximately horizontal as viewed from the rear of the truck. Once the system is aligned, tighten the previously installed **4" Hanger Clamp** and secure the **Exhaust Tip** by tightening the bolt with a 17mm wrench. **Refer to Figure 9.**



**Figure 9**

5. Check along the whole length of the exhaust system to ensure that there is adequate clearance around the spare tire, fuel and brake lines or any wiring. If any interference is detected relocate or adjust.

**Congratulations!** You are ready to begin experiencing the improved driving pleasure of your MBRP Inc. performance exhaust system. We know you will enjoy your purchase.