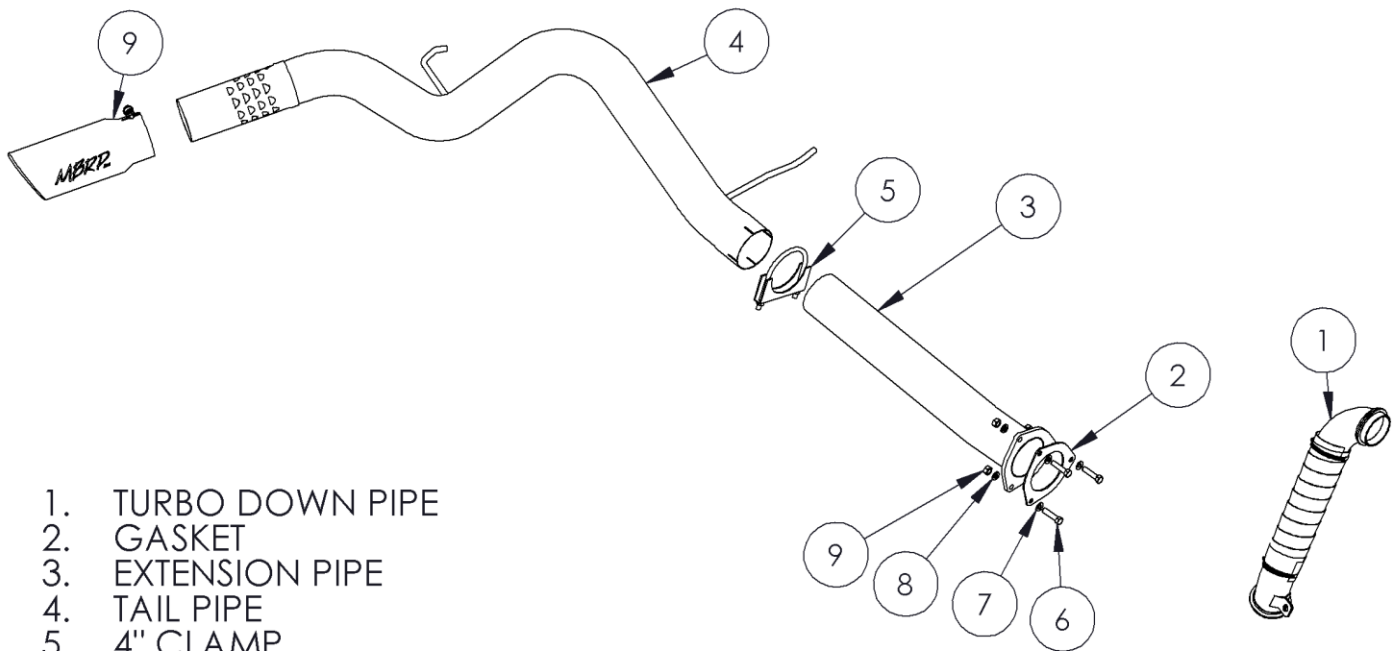


# S6052

07-10 CHEVY/GMC, 2500/3500 DURAMAX,  
PARTICULATE FILTER BACK, 4" SINGLE SIDE  
WITH TURBO DOWN PIPE



1. TURBO DOWN PIPE
2. GASKET
3. EXTENSION PIPE
4. TAIL PIPE
5. 4" CLAMP
6. 7/16" BOLT (3PCS)
7. 7/16" FLAT WASHER (3PCS)
8. 7/16" LOCK WASHER (3PCS)
9. 7/16" NUT (3PCS)
10. EXHAUST TIP

## PLEASE READ BEFORE STARTING INSTALLATION

While MBRP Inc. has made every effort to ensure that all components of this system are of superior quality and properly packaged, it is the installer's responsibility to ensure the following before removal of the factory exhaust:

- that ALL components shown above are present.
- that ALL mating components fit together.
- that there are no damaged components.
- that the system you have purchased is appropriate for your vehicle year, model and configuration.
- that the system will not interfere with any modifications previously installed or planned.
- that you have read and understand these instructions.

If you have any questions or are uncertain about any aspect of the installation of this system to your vehicle please contact your dealer before commencing installation.

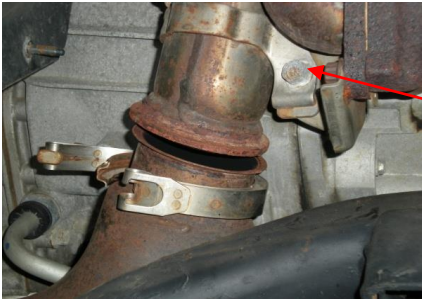
## Removal of Stock Down Pipe



**Figure 1**

1. Secure the vehicle on jack stands.
2. Remove the right front wheel.
3. Remove the right front inner wheel well liner.
4. Loosen the band clamp that connects the down pipe to the front pipe. Retain the band clamp for installation.

**Refer to Figure 1.**



**Figure 2**

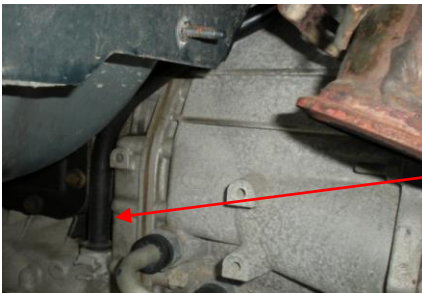
5. Remove the bolt securing the down pipe to the exhaust manifold.

**Refer to Figure 2.**

6. Remove the bolts from the rear of the front pipe located behind the torsion bar cross member.

7. Remove the front pipe from the vehicle.

8. Loosen the two nuts that retain the transmission dipstick to the engine block. Remove the dipstick tube from the transmission and remove it from the vehicle.



**Figure 3**

9. Remove the dipstick from the transmission. **Refer to Figure 3.**

10. Remove the three bolts at the top of the turbo heat shield and rotate it toward the rear. This will allow access to the top band clamp of the down pipe. If the clamp is rotated to the bottom you may need to remove the bolts from the computer module located to the driver side of the turbo to allow access to the upper band clamp. Retain the fasteners for installation. **Refer to Figure 4 & 5.**



**Figure 4**

1. Loosen the upper band clamp on the down pipe.

2. With the band clamp removed apply slight pressure to the down pipe pushing from the turbo exhaust housing.

13. Remove the factory down pipe from underside of the vehicle between the frame and transmission. **Figure 6** shows the stock down pipe removed.



**Figure 5**

## Installation of MBRP Down Pipe



**Figure 6**

1. Feed the MBRP **Down Pipe** into area between the transmission and the frame.
2. Insert the **Down Pipe** into the exhaust housing of the turbo completely until the flange on the turbo and **Down Pipe** are flush.



**Figure 7**

3. Loosely fit the stock band clamp on the upper turbo and down pipe connection to keep the **Down Pipe** from falling out but allowing it to rotate slightly. Refer to **Figure 7**.
4. Reinstall the transmission dipstick into the transmission and the two nuts to the back of the bell housing.



**Figure 8**

5. Secure the **Down Pipe** to the bracket on the exhaust manifold using the original bolt.

Reinstall the front pipe to the rear exhaust.

6. Reinstall the band clamp securing the front pipe to the **Down Pipe**. Refer to **Figure 8**.

7. Tighten the upper band clamp securing the **Down Pipe** to the turbo housing.

8. Replace the upper heat shield and secure it using the original bolts and reinstall the electronic module if needed.



**Figure 9**

9. Start the vehicle to check for exhaust leaks.

10. Reinstall the inner fender liner and wheel.

## Removal of Stock System

1. Apply a penetrating lubricant liberally to all exhaust fasteners, hangers and rubber isolators.

2. Cut the factory tail pipe as shown and remove the rear section. Remove the factory tail pipe assembly from the factory rubber isolators. Refer to **Figure 9**.

3. Remove the three nuts at the muffler inlet flange and remove the muffler. Refer to **Figure 10**.



**Figure 10**



**Figure 11**



**Figure 12**



**Figure 13**



**Figure 14**

## Installation of MBRP Inc. Exhaust

1. Install the three supplied **7/16" Bolts** in the existing flange and place the supplied **Gasket** over the bolts. **Refer to Figure 11.**
2. Install the **Extension Pipe** onto the flange. There is a slight bend in the **Extension Pipe**. The inside of this bend must face the driveshaft. If the outlet of the **Extension Pipe** angles slightly towards the driveshaft you have installed it correctly. Failure to install this pipe correctly will result in the **Tail Pipe** not fitting properly. Secure with the three supplied **7/16" Flat Washers**, three **7/16" Lock Washers** and three **7/16" Nuts**. **Refer to Figure 12.**
3. Slide the **4" Clamp** over the outlet of the **Extension Pipe**. Install the **Tail Pipe** from the rear of the truck over the axle and slide on to the **Extension Pipe**. Install the **Tail Pipe** hangers into the factory rubber isolators. **Refer to Figure 13.**
4. Loosely install the supplied **Tip** and align the **Tail Pipe** approximately horizontal as viewed from the rear of the truck. Once the system is aligned, tighten the previously installed **4" Clamp** and secure the **Tip** by tightening the bolt.
5. Check along the whole length of the exhaust system to ensure that there is adequate clearance around the spare tire, fuel and brake lines or any wiring. If any interference is detected relocate or adjust.



**Congratulations!** You are ready to begin experiencing the improved driving pleasure of your MBRP Inc. performance exhaust system. We know you will enjoy your purchase.