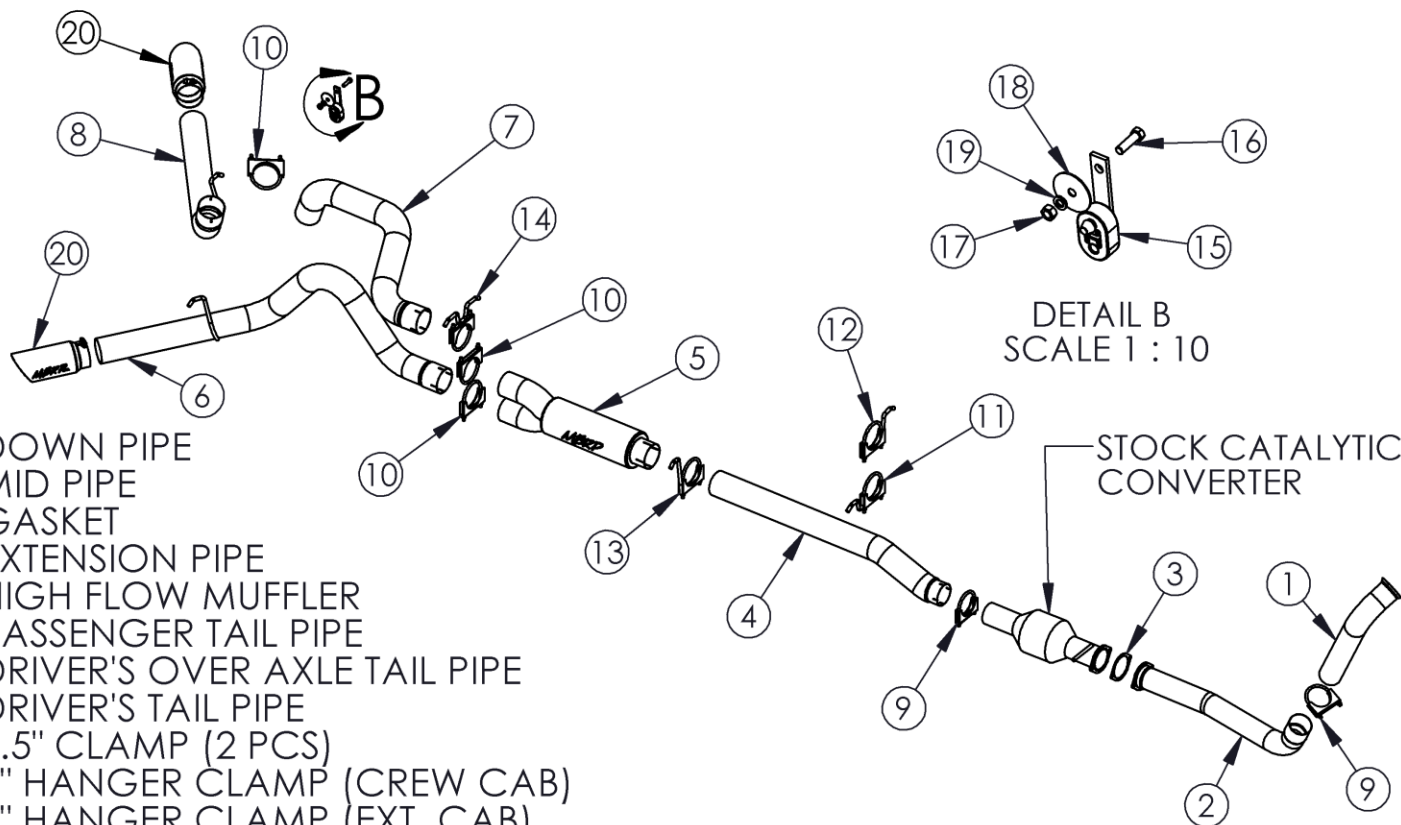


# S6210

03-07 FORD F250/F350 6.0L  
POWERSTROKE, TURBO BACK (STOCK  
CAT), EC/CC, 4" COOL DUALS®

# MBRP INC.

## PERFORMANCE EXHAUST



1. DOWN PIPE
2. MID PIPE
3. GASKET
4. EXTENSION PIPE
5. HIGH FLOW MUFFLER
6. PASSENGER TAIL PIPE
7. DRIVER'S OVER AXLE TAIL PIPE
8. DRIVER'S TAIL PIPE
9. 3.5" CLAMP (2 PCS)
10. 4" HANGER CLAMP (CREW CAB)
11. 4" HANGER CLAMP (EXT. CAB)
12. 4" HANGER CLAMP
13. 4" CLAMP (3 PCS)
14. 4" T-HANGER
15. HANGER KIT
16. HEX BOLT 7/16" x 1-1/2"
17. HEX NUT 7/16"
18. FENDER WASHER 7/16"
19. LOCK WASHER 7/16"
20. EXHAUST TIP - (2 PCS)

## PLEASE READ BEFORE STARTING INSTALLATION

While MBRP Inc. has made every effort to ensure that all components of this system are of superior quality and properly packaged it is the installer's responsibility to ensure the following before removal of the factory exhaust:

- that ALL components shown above are present.
- that ALL mating components fit together.
- that there are no damaged components.
- that the system you have purchased is appropriate for your vehicle year, model and configuration.
- that the system will not interfere with any modifications previously installed or planned.
- that you have read and understand these instructions.

If you have any questions or are uncertain about any aspect of the installation of this system to your vehicle please contact your dealer before commencing installation.

## Removal of Stock System:

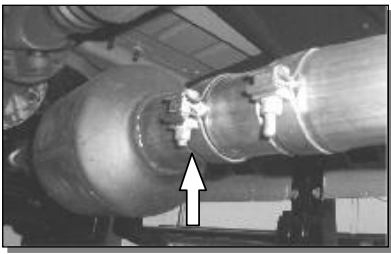


Figure 1



Figure 2

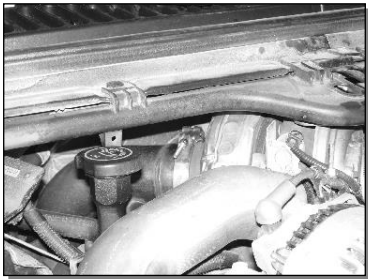


Figure 3



Figure 4



Figure 5

1. Apply a penetrating lubricant liberally to all exhaust fasteners, hangers and rubber insulators.
2. Loosen the nut on the band clamp located behind the catalytic converter. See Figure 1.
3. Remove the muffler and tail pipe from the OEM rubber hangers. To remove the system in one piece, on 03-04 models, the bottom shock bolt of the passenger side shock must be removed. This is not required on 05 or 06 models. Separate the stock exhaust at the slip joint located behind the catalytic converter and remove the muffler and tail pipe from under the truck. Re-install the bottom shock bolt.
4. Remove the catalytic converter by removing the two nuts holding the inlet flange together using a 15mm wrench or socket. Retain the nuts for the re-installation of the catalytic converter. See Figure 2.
5. Remove the down pipe from the turbo by removing the band clamp using an 11mm socket. Retain the band clamp for the installation of the new down pipe. See Figure 3.  
Cut the down pipe in front of the transmission cross member to remove. (Note: The stock down pipe can be removed in one piece by removing the transmission cross member. MBRP Inc. recommends that this procedure only be done by qualified, trained professionals using tools and equipment designed to safely carry out this process.)

Installation of MBRP Inc. Performance Exhaust:



Figure 6



Figure 7

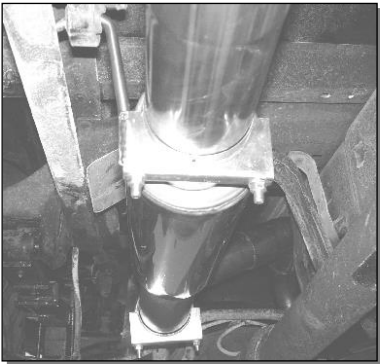


Figure 8

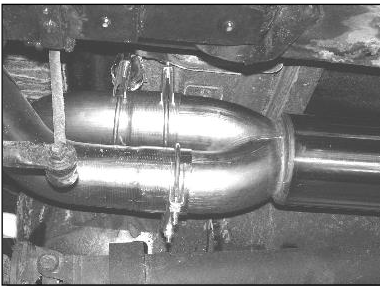


Figure 9

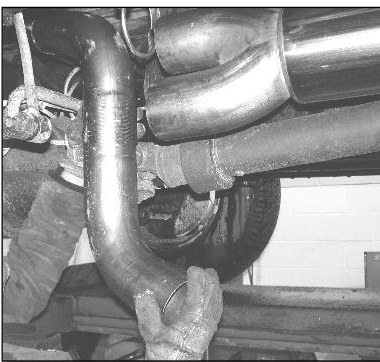


Figure 10

1. Install the Down Pipe in the same position as the stock down pipe and attach the flared end to the turbo using the stock band clamp. Do not fully tighten until all components are in place.

See Figure 4.

2. Attach the Mid Pipe to the Down Pipe using a 3 1/2" Clamp to secure the slip joint.

See Figure 5.

3. Attach the factory catalytic converter to the Mid Pipe by placing the gasket supplied between the flanges and installing the two nuts that were removed previously.

See Figure 6.

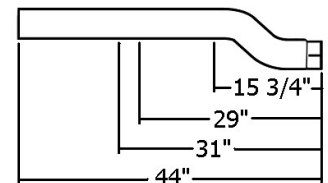
4. Install the Extension Pipe over the catalytic converter. See Figure 7.

The Extension Pipe provided is pre-cut for the crew cab long bed configuration. All other configurations will require this pipe to be cut.

Extended cab short bed cut to 15 3/4"

Crew cab short bed cut to 29"

Extended cab long bed cut to 31"



5. Install the Muffler over the Extension Pipe. Install the Hanger Clamp at the connection between the Muffler and the Extension Pipe.

See Figure 8.

6. Position the Muffler outlets vertically.

See Figure 9.

7. Install the Over Axle Pipe connecting the slip joint to the top outlet of the dual outlet Muffler. Do not tighten to allow for adjustment.

See Figure 10.

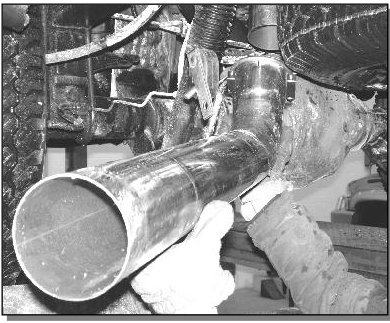


Figure 11

8. Install the "T" Hanger Clamp into the two OEM rubber hangers located above the outlets of the Muffler. The "T" Hanger Clamp provided is used at this location to support the exhaust. It is positioned around the Over Axle Pipe and is not used as a sealing clamp.

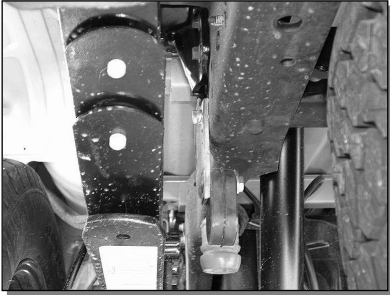


Figure 12

9. Connect the Driver's Side Tail Pipe to the Over Axle Pipe. Lift the Tail Pipe into approximate position.

See Figure 11.

Using the factory hole located in the frame, found directly above the tail pipe hanger, attach the Rubber Hanger provided using the 7/16" nut & bolt supplied. See Figure 12. Hang the Tail Pipe using the installed Rubber Hanger.

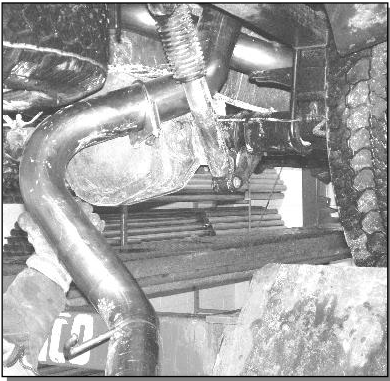


Figure 13

10. Install the Passenger Side Tail Pipe from the rear of the truck, over the axle and attach to the lower outlet of the Muffler. Install the tail pipe hanger into the OEM hanger to complete the driver's side.

See Figure 13

11. Install the provided Clamps around the pipes where needed. Adjust the Tail Pipe and check along the whole length of the exhaust system to ensure that there is adequate clearance around the fuel and brake lines or any wiring. If any interference is detected relocate or adjust.

12. Make sure the complete exhaust is in place before tightening the clamps. Start at the front of the exhaust system and begin tightening all connections.

13. Install and adjust Tips to suit.



Congratulations! You are ready to begin enjoying the improved performance and driving experience of your MBRP Inc. performance exhaust system. We hope you enjoy your purchase.