

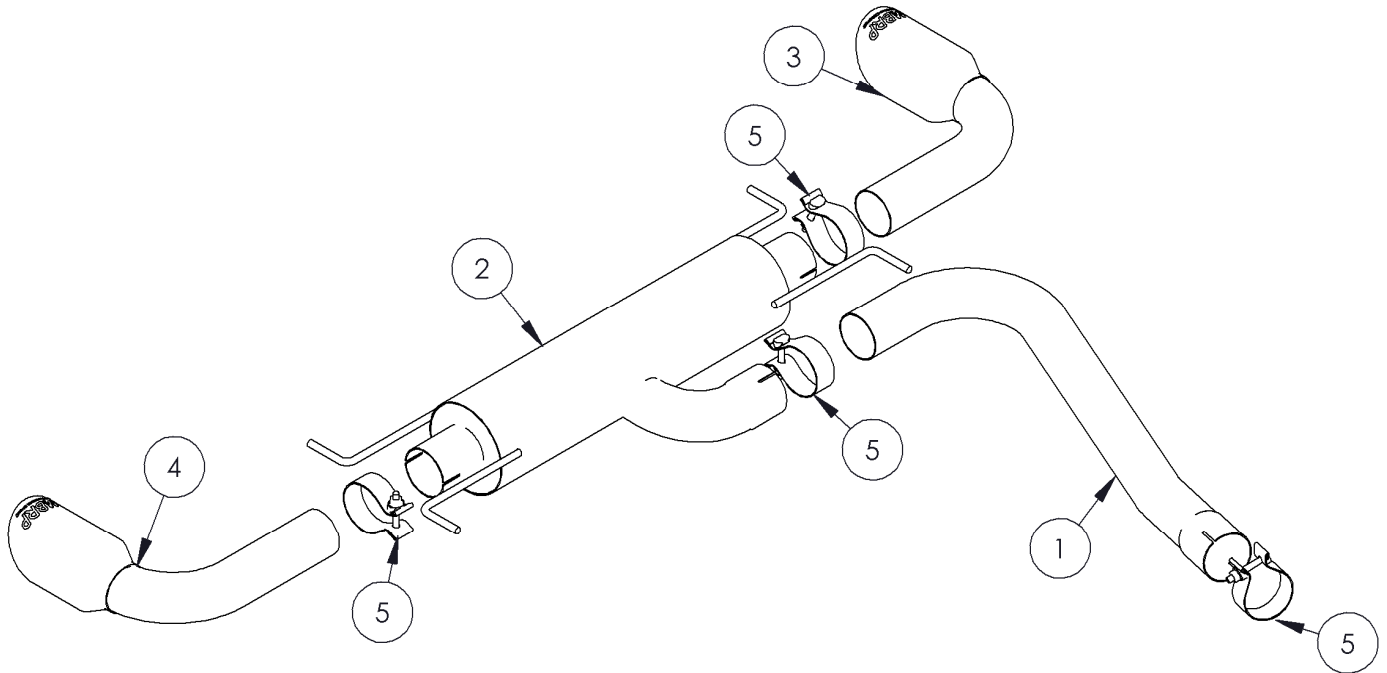
S7006

2007-2008 PONTIAC
SOLSTICE GXP 2.0L TURBO
AXLE BACK, REAR EXIT DUALS

MBRP

INC.

PERFORMANCE EXHAUST



1. EXTENSION PIPE
2. MUFFLER
3. DRIVER SIDE TAIL PIPE (WITH TIP)
4. PASSENGER SIDE TAIL PIPE (WITH TIP)
5. 2 1/2" BAND CLAMP (SADDLE CLAMP IN ALUMINIZED SYSTEM) 4PCS

PLEASE READ BEFORE STARTING INSTALLATION

While MBRP Inc. has made every effort to ensure that all components of this system are of superior quality and properly packaged, it is the installer's responsibility to ensure the following before removal of the factory exhaust:

- that ALL components shown above are present.
- that ALL mating components fit together.
- that there are no damaged components.
- that the system you have purchased is appropriate for your vehicle year, model and configuration.
- that the system will not interfere with any modifications previously installed or planned.
- that you have read and understand these instructions.

If you have any questions or are uncertain about any aspect of the installation of this system to your vehicle please contact your dealer before commencing installation.

2007-2008 PONTIAC SOLSTICE GXP 2.0L

Removal of stock system:

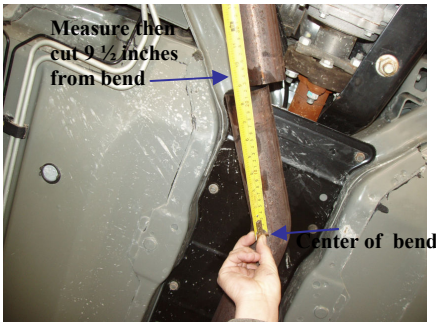


Figure 1

1. Apply a penetrating lubricant liberally to all exhaust fasteners, hangers and rubber insulators.

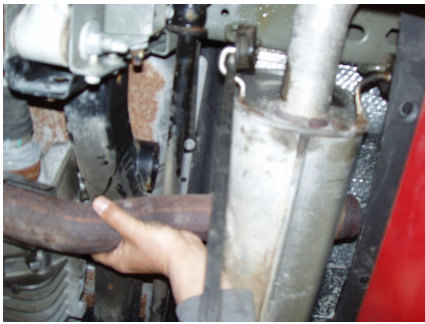


Figure 2

2. Measure and mark 9 1/2" from the center of the bend of the stock exhaust pipe. Cut the pipe at the mark. Remove any burrs with a file. **Refer to Figure 1.**

3. The exhaust can be removed from the vehicle by sliding the hangers from the rubber isolators, two on each side of the muffler. **Refer to Figures 2 & 3.**



Figure 3

Installation of MBRP Inc. Performance Exhaust:

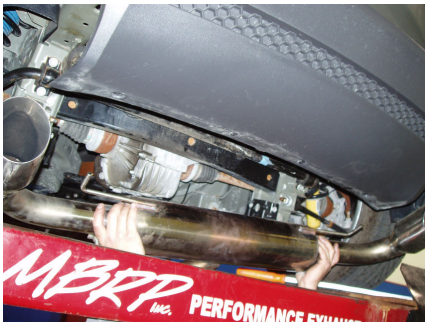


Figure 4

1. Install the **Passenger Side Tail Pipe** and **Driver Side Tail Pipe** to the **Muffler** using **2 1/2" Clamps**. Leave the clamps loose enough for some adjustment. **Refer to the Illustration on Page 1.**

2. Install the **Muffler** and **Tail Pipes** into the existing OEM rubber isolators. **Refer to Figure 4 & 5.**



Figure 5



6. Slide a 2 ½" **Clamp** onto the **Muffler**. Then slide the remaining 2 ½" **Clamp** onto the cut exhaust pipe of the vehicle. Install the **Extension Pipe** using the 2 ½" **Clamps**. Refer to **Figure 6**.



Figure 6

8. Align the exhaust as required. Starting at the front of the exhaust, tighten all clamps and connections. Leave a ½" gap between the tip and the bumper fascia. Refer to **Figure 7**.



Figure 7

9. Check along the whole length of the exhaust system to ensure that there is adequate clearance around the spare tire, fuel and brake lines or any wiring. If any interference is detected relocate or adjust.



Congratulations! You are ready to begin experiencing the improved power, sound and driving experience of your MBRP Inc. performance exhaust system. We know you will enjoy your purchase.