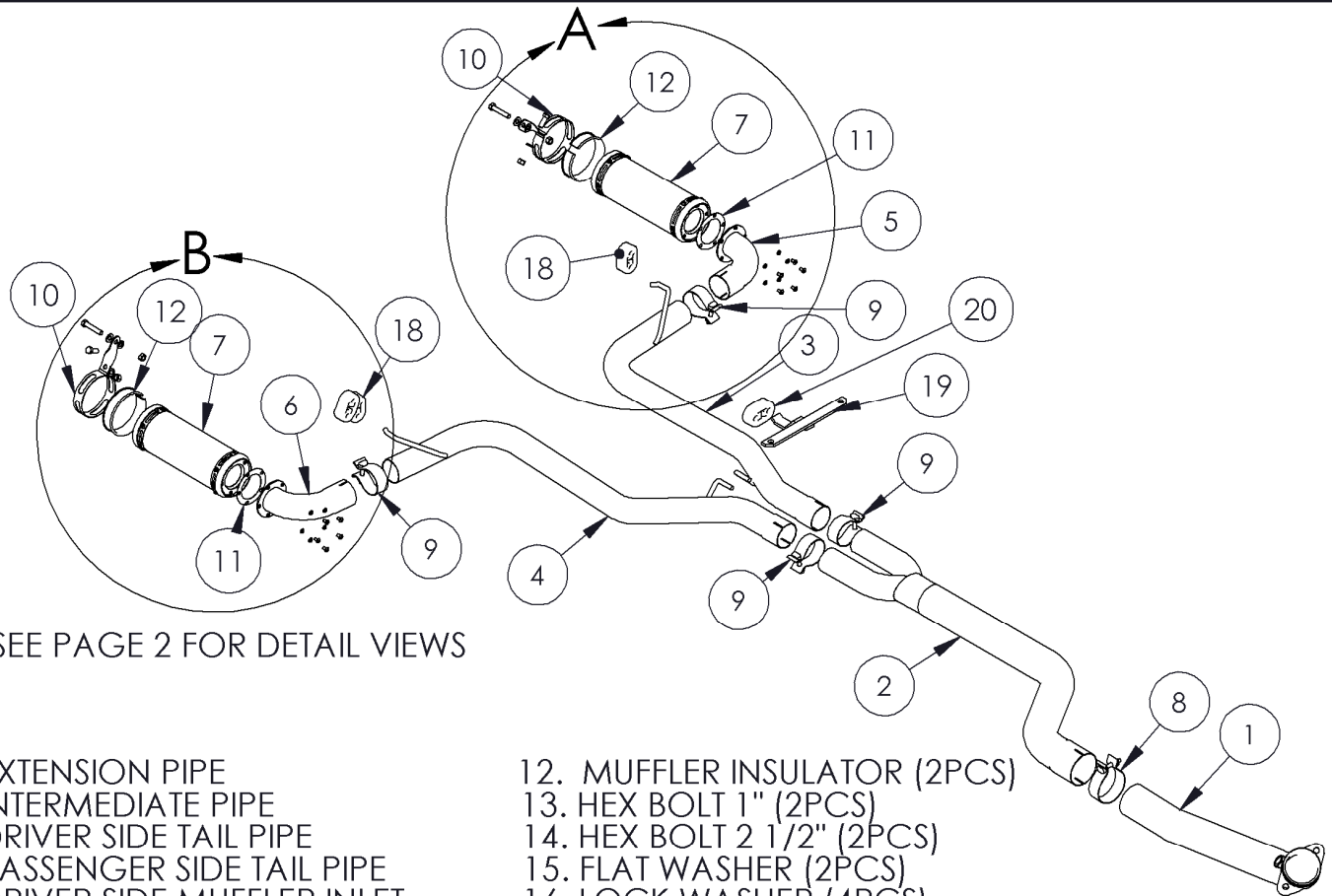


S7004 S7016

2007-2008 PONTIAC SOLSTICE GXP 2.0L
TURBO, CAT BACK REAR EXIT DUALS



PERFORMANCE EXHAUST



SEE PAGE 2 FOR DETAIL VIEWS

- | | |
|---------------------------------|---------------------------------------|
| 1. EXTENSION PIPE | 12. MUFFLER INSULATOR (2PCS) |
| 2. INTERMEDIATE PIPE | 13. HEX BOLT 1" (2PCS) |
| 3. DRIVER SIDE TAIL PIPE | 14. HEX BOLT 2 1/2" (2PCS) |
| 4. PASSENGER SIDE TAIL PIPE | 15. FLAT WASHER (2PCS) |
| 5. DRIVER SIDE MUFFLER INLET | 16. LOCK WASHER (4PCS) |
| 6. PASSENGER SIDE MUFFLER INLET | 17. HEX NUT (2PCS) |
| 7. MUFFLER (2PCS) | 18. RUBBER INSULATOR (2PCS) |
| 8. 3" BAND CLAMP | 19. EXHAUST BRACKET |
| 9. 2 1/4" BAND CLAMP (4PCS) | 20. RUBBER INSULATOR |
| 10. MUFFLER HANGER | 21. 6MM BUTTON HEAD CAP SCREW (10PCS) |
| 11. MUFFLER GASKET (2PCS) | 22. LOCK WASHER (10PCS) |

PLEASE READ BEFORE STARTING INSTALLATION

While MBRP Inc. has made every effort to ensure that all components of this system are of superior quality and properly packaged, it is the installer's responsibility to ensure the following before removal of the factory exhaust:

- that ALL components shown above are present.
- that ALL mating components fit together.
- that there are no damaged components.
- that the system you have purchased is appropriate for your vehicle year, model and configuration.
- that the system will not interfere with any modifications previously installed or planned.
- that you have read and understand these instructions.

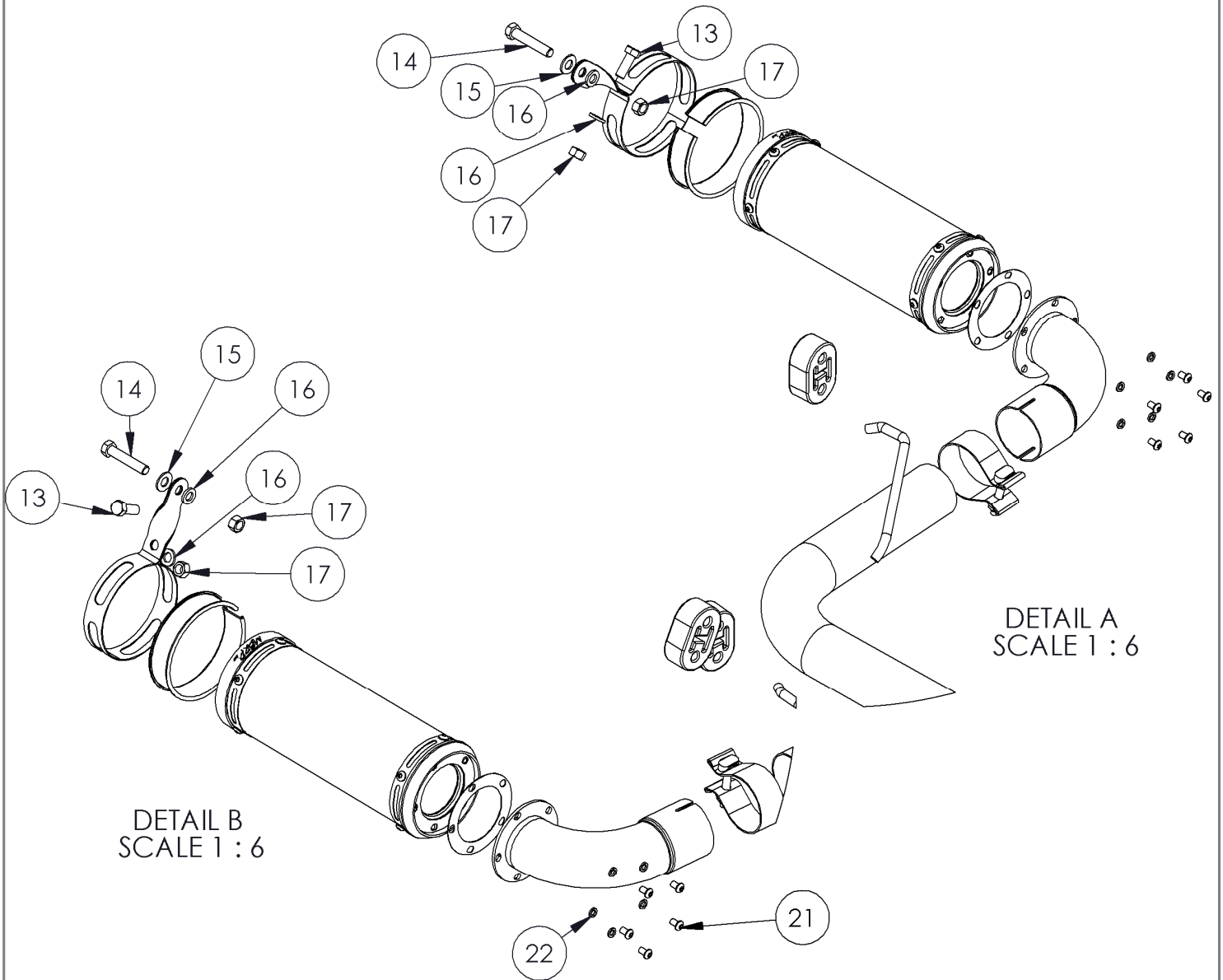
If you have any questions or are uncertain about any aspect of the installation of this system to your vehicle please contact your dealer before commencing installation.

S7004 S7016

2007-2008 PONTIAC SOLSTICE GXP 2.0L
TURBO, CAT BACK REAR EXIT DUALS

MBRP INC.

PERFORMANCE EXHAUST



DETAIL A
SCALE 1 : 6

DETAIL B
SCALE 1 : 6

- | | |
|---------------------------------|---------------------------------------|
| 1. EXTENSION PIPE | 12. MUFFLER INSULATOR (2PCS) |
| 2. INTERMEDIATE PIPE | 13. HEX BOLT 1" (2PCS) |
| 3. DRIVER SIDE TAIL PIPE | 14. HEX BOLT 2 1/2" (2PCS) |
| 4. PASSENGER SIDE TAIL PIPE | 15. FLAT WASHER (2PCS) |
| 5. DRIVER SIDE MUFFLER INLET | 16. LOCK WASHER (4PCS) |
| 6. PASSENGER SIDE MUFFLER INLET | 17. HEX NUT (2PCS) |
| 7. MUFFLER (2PCS) | 18. RUBBER INSULATOR (2PCS) |
| 8. 3" BAND CLAMP | 19. EXHAUST BRACKET |
| 9. 2 1/4" BAND CLAMP (4PCS) | 20. RUBBER INSULATOR |
| 10. MUFFLER HANGER | 21. 6MM BUTTON HEAD CAP SCREW (10PCS) |
| 11. MUFFLER GASKET (2PCS) | 22. LOCK WASHER (10PCS) |

2007-2008 PONTIAC SOLSTICE GXP

Removal of stock system:



Figure 1



Figure 2



Figure 3



Figure 4

1. Apply a penetrating lubricant liberally to all exhaust fasteners, hangers and rubber insulators.

2. Unplug the vehicles O₂ sensor from underneath the hood. Loosen the flange just after the catalytic converter and lower to a stand. Support the exhaust with a stand while removing the O₂ sensor. Save the fasteners and the O₂ sensor for the MBRP install. **Refer to Figure 1.**

3. The exhaust can be removed from the vehicle by sliding the hangers from the rubber isolators, two on each side of the muffler. **Refer to Figures 2 & 3.**

Installation of MBRP Inc. Performance Exhaust:

4. Install the O₂ sensor to the **Extension Pipe**. **Refer to Figure 4.**



Figure 5

5. Reuse the existing gasket. Using the fasteners removed in step 2 attach the **Extension Pipe** to the catalytic converter. Make sure the O₂ sensor gets plugged back in. **Refer to Figure 5.**



Figure 6

6. Install the **Exhaust Bracket** and **Rubber Insulator** using the existing fasteners. **Refer to Figure 6 & 7.**



Figure 7

7. Slide a **3" Clamp** over the **Extension Pipe** and then install the **Intermediate Pipe** to the **Extension Pipe**. Leave the **3" Clamp** loose enough for adjustment. **Refer to Figure 8.**



Figure 8

8. Slide the **2 1/4" Clamp** over the **Passenger Side Tail Pipe** and install onto the passenger side of the Y of the **Intermediate Pipe**. Replace the existing Rubber Insulator to support the **Passenger Side Tail Pipe** with the one of the **Rubber Insulators** provided. **Refer to Figure 9.**



Figure 9



Figure 10

9. Slide a **2 1/4" Clamp** over the **Driver Side Tail Pipe** and install onto the **Y** of the **Intermediate Pipe**. Replace the existing Rubber Insulator to support the **Driver Side Tail Pipe** with one of the **Rubber Insulators** provided. Refer to **Figure 10**.

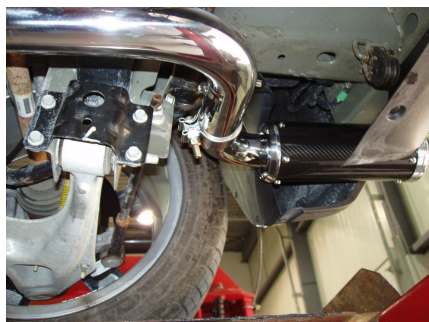


Figure 11

10. Slide a **2 1/4" Clamp** over the end **Passenger Side Tail Pipe** and install to the **Passenger Side Muffler Inlet & Muffler** to the **Passenger Side Tail Pipe**. Refer to **Figure 11**.



Figure 12

11. Slide a **2 1/4" Clamp** over the end **Driver Side Tail Pipe** and install to the **Driver Side Muffler Inlet & Muffler** to the **Driver Side Tail Pipe**. Refer to **Figure 12**.

12. Install the Muffler Hangers & Muffler Insulators to the existing OEM insulator. Refer to **Figure 13**.

13. Align the exhaust as required. Starting at the front of the exhaust, tighten all clamps and connections.

14. Check along the whole length of the exhaust system to ensure that there is adequate clearance around the spare tire, fuel and brake lines or any wiring. If any interference is detected relocate or adjust.



Figure 13



Congratulations! You are ready to begin experiencing the improved power, sound and driving experience of your MBRP Inc. performance exhaust system. We know you will enjoy your purchase.