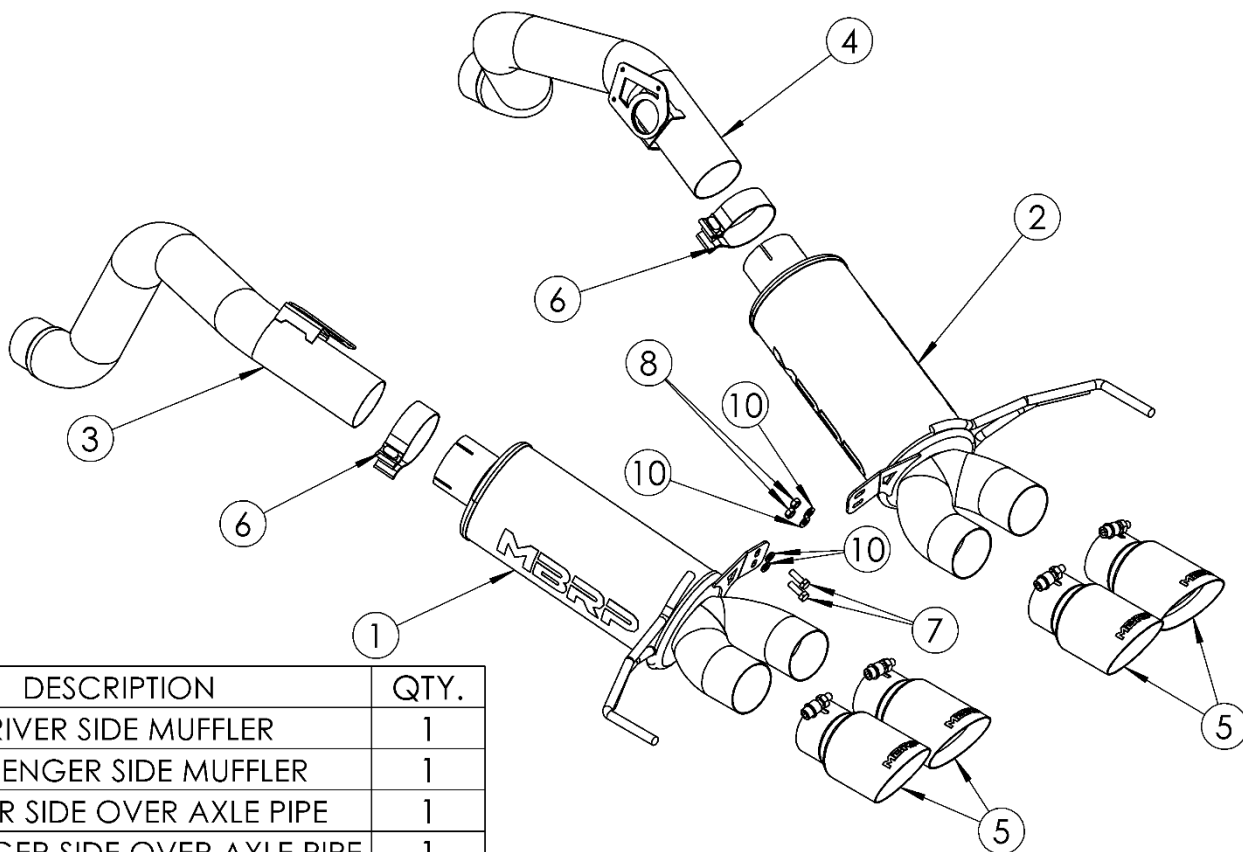


S7030

2014-2019 CHEVROLET CORVETTE,
6.2L, AXLE BACK DUAL, WITH QUAD TIPS,
TUNING MAY BE REQUIRED

MBRP®



ITEM	DESCRIPTION	QTY.
1	DRIVER SIDE MUFFLER	1
2	PASSENGER SIDE MUFFLER	1
3	DRIVER SIDE OVER AXLE PIPE	1
4	PASSENGER SIDE OVER AXLE PIPE	1
5	EXHAUST TIP	4
6	3.0" CLAMP	2
7	5/16" HEX BOLT X 1"	2
8	5/16" HEX NUT	2
9	5/16" FLAT WASHER	2
10	5/16" LOCK WASHER	2

PLEASE READ BEFORE STARTING INSTALLATION

While MBRP has made every effort to ensure that all components of this system are of superior quality and properly packaged, it is the installer's responsibility to ensure the following before removal of the factory exhaust:

- that ALL components shown above are present.
- that ALL mating components fit together.
- that there are no damaged components.
- that the system you have purchased is appropriate for your vehicle year, model and configuration.
- that the system will not interfere with any modifications previously installed or planned.
- that you have read and understand these instructions.

If you have any questions or are uncertain about any aspect of the installation of this system to your vehicle please contact your dealer before commencing installation.

MBRP®

Removal of Stock System

1 The lower fascia needs to be removed. Remove the ten bolts that secure the bottom corners of the lower fascia (5 per side). **Refer to Figure 1.**

Refer to Figure 1.

2. Remove the two bolts above the tip location. **Refer to Figure 2.**

3. Unscrew and remove the license plate to enable access to the two upper center mounting bolts for the rear. **Refer to Figure 3.**

4. Remove the two lower mesh inserts on each side of the lower fascia. Each one is snapped in place using six tabs, they can be pushed out from the inside of the fascia. **Refer to Figure 4.**

5. Remove the two reflective lenses. Each reflector is snapped in place using three tabs, which can be pushed out from inside the fascia. Below each of them there is an additional two bolts. **Refer to Figure 4.**

6. Unsnap each lower rear corner of the rear fascia by pushing the end of the tab inwards while pushing the rear fascia up and then backwards. **Figure 5.**



Figure 1



Figure 2

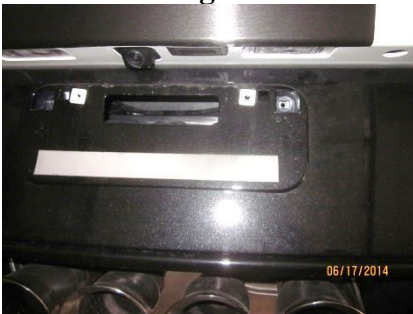


Figure 3



Figure 4



Figure 5

MBRP®



Figure 6

7. Unplug the motors that control the exhaust valves, some cars will have an additional set that operate valves for the outside tips. All cars will have the motors located just in front of the mufflers.

Refer to Figures 6 & 7.

8. Loosen the band clamps located just forward of the rear axle. The band clamps will be reused for your new exhaust. Remove the two bolts holding the stock mufflers together. **Refer to Figure 6.**

9. Beginning on the passenger side, remove the two bolts securing the rear muffler hanger. Set aside the hanger bolts to be reused during the installation process. Remove the passenger-side muffler assembly from the vehicle. Repeat for the driver-side muffler assembly. **Refer to Figures 6 & 7.**

10. Remove the exhaust valves motors from the stock exhaust assemblies retain the parts and hardware for installation. **Refer to Figure 8.**



Figure 7



Figure 8

Installation of MBRP Performance Exhaust

Note: Tuning may be required

1. Install the valve motors to the **Passenger-side** and **Driver-side Over Axle Pipes** using the stock hardware. Note: the valve assembly will just be held in place and plugged back in. There is no exhaust valve in the MBRP system but by reinstalling the valve motor no warning lights will appear. The valves are not actually used in any mode other than the Economy mode. The economy mode is not recommended to be used with your performance exhaust.

2. Install the **Passenger-Side Over Axle Pipe** and **Driver-side Over Axle Pipe** using the existing band clamp. Leave the clamps loose enough for some adjustment. Reattach the wiring harness to the valve motors.

3. Install the **Driver-Side Muffler** using the **3" Band Clamp** and the rear muffler hanger assembly that was removed in step 9.

4. Repeat step 3 for the **Passenger-Side Muffler**.



Figure 9



Figure 10

MBRP®



Figure 11

5. Attach the mufflers together with the hardware provided. Leave loose enough for some adjustment. Install the **Exhaust Tips** to the 4 muffler outlets. Check spacing & height of the tips, they should be evenly spaced. Adjustments can be made by rotating the **Over Axle Pipes** and by tightening the hardware between the mufflers. **Refer to Figure 12.**



Figure 12

6. Reinstall fascia and check the alignment. Align the edge of each band clamp with the edge of the joint it is connecting. Tighten all hardware and clamps, starting at the front and working rearward to secure the system. Check along the full length of the exhaust system to ensure there is adequate clearance for fuel lines, vent lines, brake lines, frame, bodywork, suspension and any wiring, etc. If there is any interference detected, relocate or adjust to provide adequate clearance. Ensure all clamp connections are secure and components are unable to rotate or slide. Band clamps require approximately 45 lb-ft (60 N-m) of torque. Verify clearances, system security and band clamp torque after 30- 60 miles (50-100 km) of driving.



Congratulations! You are ready to begin experiencing the improved power, sound, and driving experience of your **MBRP** performance exhaust system. We know you will enjoy your purchase.