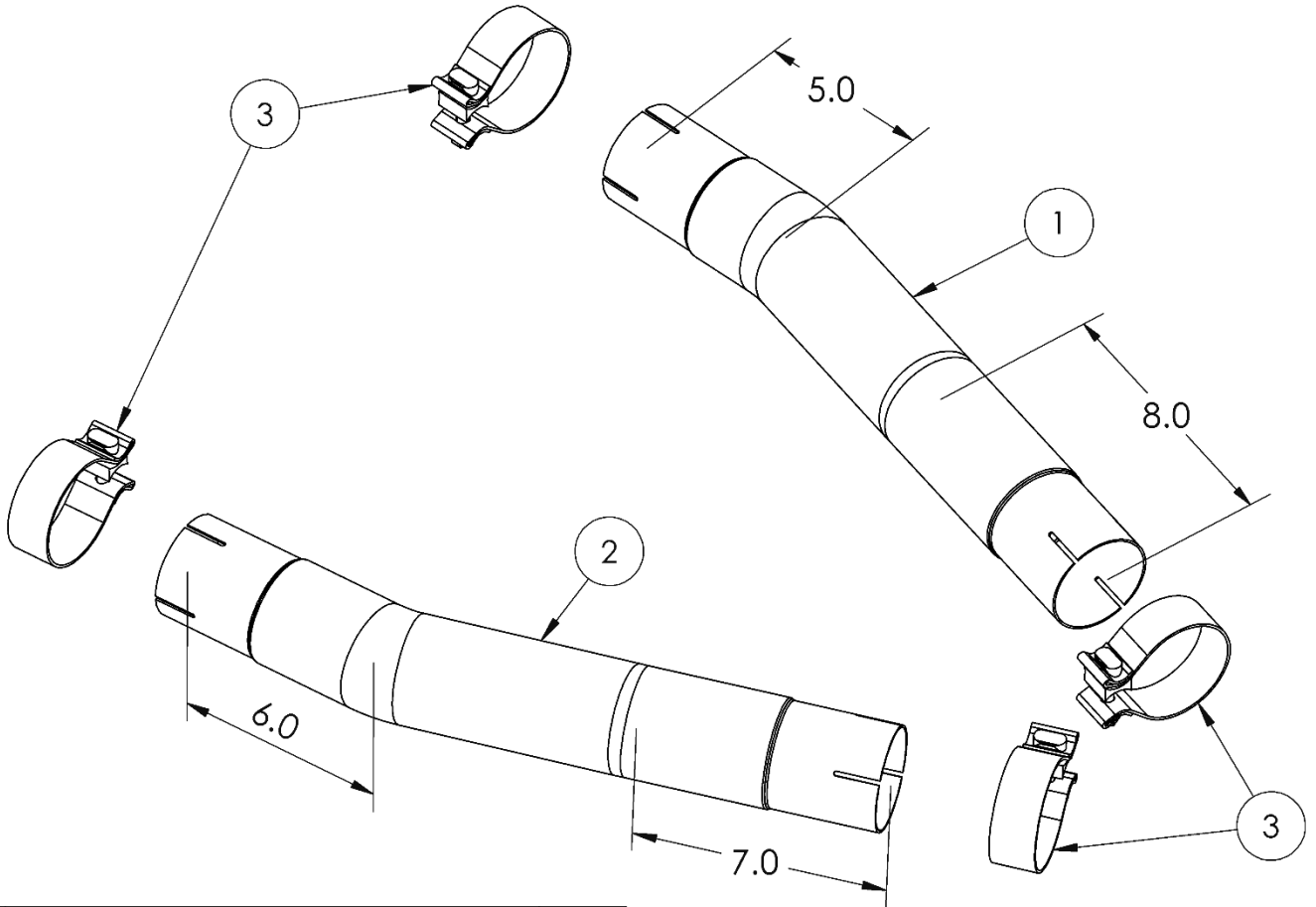


S7101

2015-UP DODGE CHALLENGER, CHARGER,
5.7L (2017-UP), 6.4L, MUFFLER BYPASS, 3.0"
DUAL

MBRP®



ITEM	DESCRIPTION	QTY
1	DRIVER-SIDE MUFFLER BYPASS	1
2	PASSENGER-SIDE MUFFLER BYPASS	1
3	2.75"CLAMP	4

PLEASE READ BEFORE STARTING INSTALLATION

While MBRP has made every effort to ensure that all components of this system are of superior quality and properly packaged, it is the installer's responsibility to ensure the following before removal of the factory exhaust:

- that ALL components shown above are present.
- that ALL mating components fit together.
- that there are no damaged components.
- that the system you have purchased is appropriate for your vehicle year, model and configuration.
- that the system will not interfere with any modifications previously installed or planned.
- that you have read and understand these instructions.

If you have any questions or are uncertain about any aspect of the installation of this system to your vehicle please contact your dealer before commencing installation.

MBRP

Removal of Stock System



Figure 1



Figure 2



Figure 3



Figure 4



Figure 5

1. Apply penetrating lubricant liberally to all exhaust fasteners, hangers and rubber insulators.

2. Disconnect the exhaust valve actuator wiring. There are two actuators. Refer to Figure 1.

3. Loosen both front pipe clamps.

4. Unbolt the rear hangers from the vehicle on both sides. Keep the hardware for the installation.

Refer to Figure 2.

5. With the exhaust system supported, remove the remaining factory hangers from the factory insulators. Alternatively, the factory insulators may be unbolted.

Refer to Figure 3.

6. Carefully remove the exhaust from the vehicle. It is ideal to have a helper at each tip as you disengage the front pipes from the catalytic converters and guide the exhaust out from under the vehicle.

7. Mark a cut line 2.5" from the front of each oval muffler, and 1.25" from the rear of each oval muffler.

Refer to Figures 4 (Front) & 5 (Rear).

8. Verify cut locations by overlaying the **Bypass Pipes** on the factory system. The **Driver-Side Bypass Pipe** is identified by a longer inlet, and shorter outlet than the **Passenger-Side Bypass Pipe**.

Refer to Figure 6 and Page 1.

9. Cut at the marks and deburr the pipes.

Installation of MBRP Performance Exhaust

1. Reinstall the factory X-pipe in its original location. Do not fully tighten any clamps until the system is aligned.

2. Using two 2.75" Clamps, loosely install the **Driver-Side Bypass Pipe** onto the factory X-pipe. The more tightly bent end goes to the rear of the vehicle.

Refer to Figure 7.

MBRP

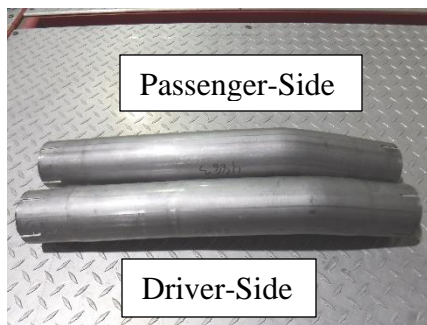


Figure 6



Figure 7



Figure 8



Figure 9



Figure 10

3. Place the factory driver-side tail pipe into the **Driver-Side Bypass Pipe** and reinstall the factory hangers using the original hardware. Reconnect the exhaust valve actuator wiring.

Refer to Figure 8.

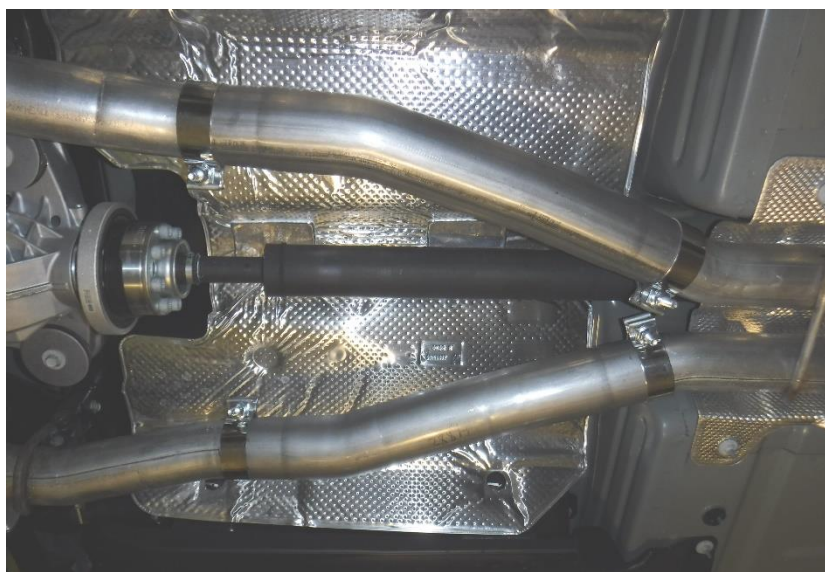
4. Using two **2.75" Clamps**, loosely install the **Passenger-Side Bypass Pipe** onto the factory X-pipe. The more tightly bent end goes to the rear of the vehicle.

Refer to Figure 9.

5. Place the factory passenger-side tail pipe into the **Passenger-Side Bypass Pipe** and reinstall the factory hangers using the original hardware. Reconnect the exhaust valve actuator wiring.

Refer to Figure 10.

6. Carefully align the system and tips. Align the edge of each band clamp with the edge of the joint it is connecting. Tighten all hardware and clamps, starting at the front and working rearward to secure the system. Check along the full length of the exhaust system to ensure there is adequate clearance for fuel lines, vent lines, brake lines, frame, bodywork, suspension and any wiring, etc. If there is any interference detected, relocate or adjust to provide adequate clearance. Ensure all clamp connections are secure and components are unable to rotate or slide. Band clamps require approximately 45 lb-ft (60 N-m) of torque. Verify clearances, system security and band clamp torque after 30-60 miles (50-100 km) of driving.



Congratulations! You are ready to begin experiencing the improved power, sound and driving experience of your **MBRP** Performance Exhaust. We know you will enjoy your purchase!