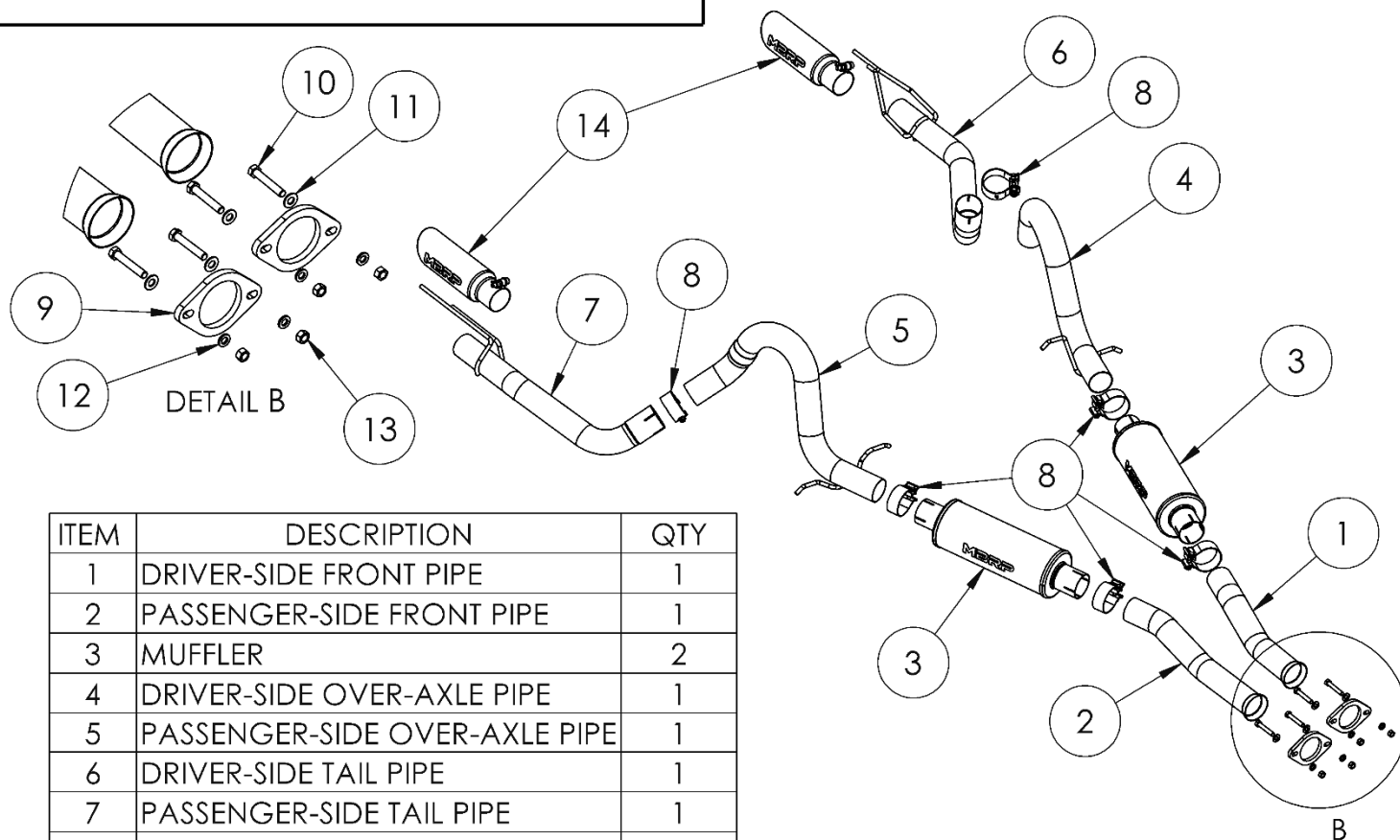


S7221

1999-2004 FORD MUSTANG GT/ MACH 1,
4.6L, CAT-BACK, 2.5" DUAL REAR

MBRP®



ITEM	DESCRIPTION	QTY
1	DRIVER-SIDE FRONT PIPE	1
2	PASSENGER-SIDE FRONT PIPE	1
3	MUFFLER	2
4	DRIVER-SIDE OVER-AXLE PIPE	1
5	PASSENGER-SIDE OVER-AXLE PIPE	1
6	DRIVER-SIDE TAIL PIPE	1
7	PASSENGER-SIDE TAIL PIPE	1
8	2.5" CLAMP	6
9	2-BOLT FLANGE	2
10	BOLT	4
11	3/8" FLAT WASHER	4
12	3/8" LOCK WASHER	4
13	3/8" HEX NUT	4
14	EXHAUST TIP	2

PLEASE READ BEFORE STARTING INSTALLATION

While MBRP has made every effort to ensure that all components of this system are of superior quality and properly packaged, it is the installer's responsibility to ensure the following before removal of the factory exhaust:

- that ALL components shown above are present.
- that ALL mating components fit together.
- that there are no damaged components.
- that the system you have purchased is appropriate for your vehicle year, model and configuration.
- that the system will not interfere with any modifications previously installed or planned.
- that you have read and understand these instructions.

If you have any questions or are uncertain about any aspect of the installation of this system to your vehicle please contact your dealer before commencing installation.

MBRP



Figure 1



Figure 2



Figure 3



Figure 4

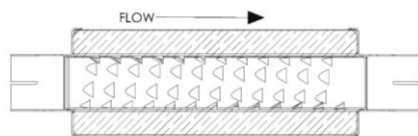


Figure 5

Removal of Stock System

1. Apply penetrating lubricant liberally to all exhaust fasteners, hangers, and rubber insulators.
2. Cut the tail pipe sections off directly behind the axle and slide each tail pipe out of the rear isolators.
Refer to Figure 1.

3. Unbolt the 2 front flanges and break each connection free from the factory H-pipe.
Refer to Figure 2.

4. With the vehicle lifted and weight removed from the rear wheels disconnect the remaining 2 isolators (per side) and remove exhaust from the car.

Note: If the exhaust is cut above the axle the weight does not need to be removed from the rear wheels.

Installation of MBRP Performance Exhaust

1. Slide the **2-Bolt Flange** onto the **Driver-Side Front Pipe** and install onto the factory H-pipe with the supplied hardware.
Refer to Figure 3.

2. Install a **2.5" Clamp** onto each end of the **Muffler** and install onto the **Driver-Side Front Pipe**. Ensure the exhaust flow will travel over the internal louvers vs into the louvers.
Refer to Figures 4 & 5.

3. Remove the factory isolators from the vehicle and install onto the **Driver-Side Over-Axle Pipe**. Place the **Driver-Side Over-Axle Pipe** over the axle and into the **Muffler**. Attach the rubber isolators onto the vehicle.
Refer to Figure 6.

4. Slide the **Driver-Side Tail Pipe** into the driver-side factory insulator and, using a **2.5" Clamp**, install the **Driver-Side Tail Pipe** onto the **Driver-Side Over-Axle Pipe**.
Refer to Figure 7&8.

5. Repeat steps 1-4 for the passenger side.

MBRP

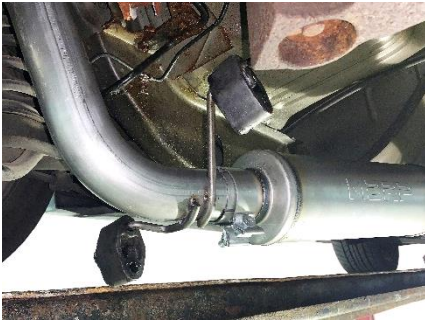


Figure 6



Figure 7



Figure 8

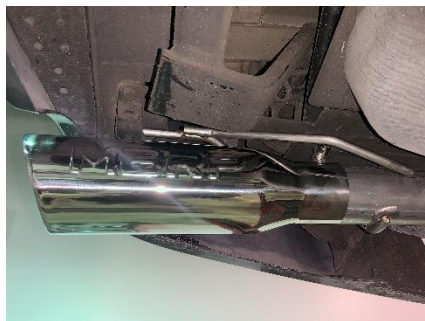


Figure 9

6. Install the Tips.
Refer to Figure 9.

7. Carefully align all parts of the system to achieve the best possible fit, each Front Pipe should be parallel with the factory H-pipe to achieve best fit.

8. Carefully align the system and tips. Align the edge of each band clamp with the edge of the joint it is connecting. Tighten all hardware and clamps, starting at the front and working rearward to secure the system. Check along the full length of the exhaust system to ensure there is adequate clearance for fuel lines, vent lines, brake lines, frame, bodywork, suspension and any wiring, etc. If there is any interference detected, relocate or adjust to provide adequate clearance. Ensure all clamp connections are secure and components are unable to rotate or slide. Band clamps require approximately 45 lb-ft (60 N-m) of torque. Verify clearances, system security and band clamp torque after 30-60 miles (50-100 km) of driving.



Congratulations! You are ready to begin experiencing the improved power, sound and driving experience of your **MBRP** Performance Exhaust. We know you will enjoy your purchase!