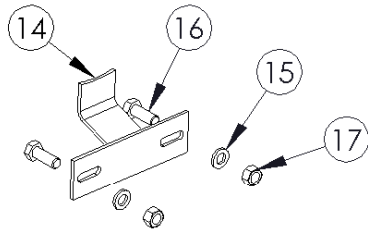


S8004

07 - 10 CHEVY/GM DURAMAX (LMM),
EC/CC - SB, FILTER BACK SMOKERS™

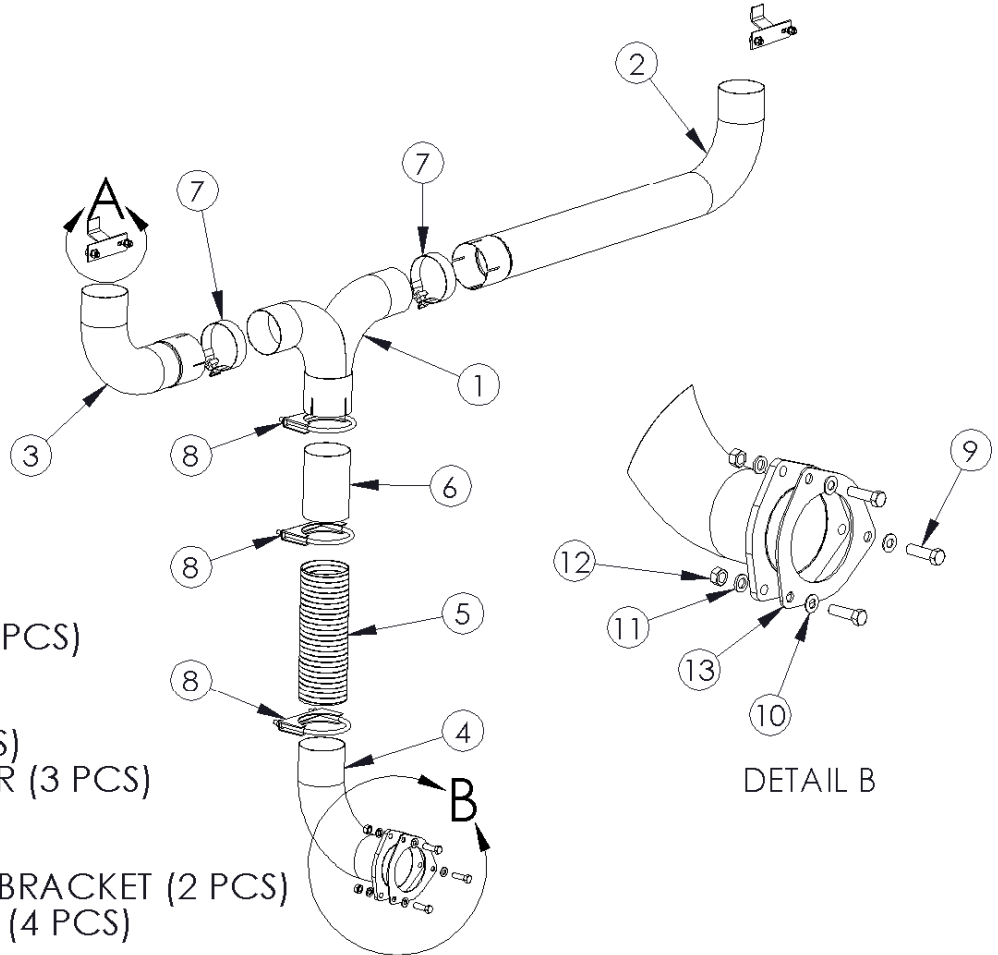
MBRP INC.

PERFORMANCE EXHAUST



DETAIL A
(SHOWN EXPLODED)

1. T-PIPE
2. ELBOW - 37"
3. ELBOW - 13"
4. ELBOW ASSEMBLY
5. FLEX PIPE
6. EXTENSION PIPE - 6"
7. 4" BAND CLAMP (2 PCS)
8. 4" CLAMP (3 PCS)
9. 7/16" BOLT (3 PCS)
10. 3/8" WASHER (3 PCS)
11. 7/16" LOCK WASHER (3 PCS)
12. 7/16" NUT (3 PCS)
13. GASKET
14. STACK MOUNTING BRACKET (2 PCS)
15. 3/8" LOCK WASHER (4 PCS)
16. 3/8" BOLT (4 PCS)
17. 3/8" NUT (4 PCS)



DETAIL B

NOTE: STACKS SOLD SEPARATELY

PLEASE READ BEFORE STARTING INSTALLATION

While MBRP Inc. has made every effort to ensure that all components of this system are of superior quality and properly packaged it is the installer's responsibility to ensure the following before removal of the factory exhaust:

- that ALL components shown above are present.
- that ALL mating components fit together.
- that there are no damaged components.
- that the system you have purchased is appropriate for your vehicle year, model and configuration.
- that the system will not interfere with any modifications previously installed or planned.
- that you have read and understand these instructions.

If you have any questions or are uncertain about any aspect of the installation of this system to your vehicle please contact your dealer before commencing installation.

Removal of Stock System:

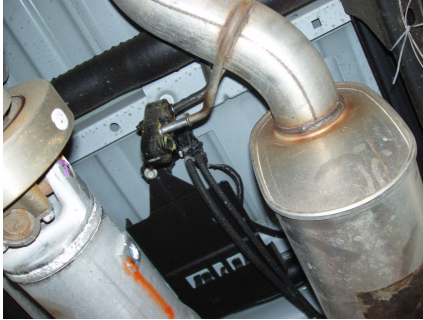


Figure 1

1. Apply a penetrating lubricant liberally to all exhaust fasteners, hangers and rubber insulators.



Figure 2

2. Remove the factory tail pipe assembly from the factory rubber insulators. **Refer to Figures 1 and 2.**



Figure 3

3. With the spare tire removed, the muffler/tailpipe assembly can be removed towards the front of the truck in one piece **IF** the rear of the vehicle is supported on the frame by jack stands or on a two post hoist [the rear axle needs to 'droop']. If you do not have the above resources, cut the factory tail pipe as shown and remove the rear section. **Refer to Figure 3.**



Figure 4

4. Remove the three nuts at the muffler inlet flange and remove the muffler. **Refer to Figure 4.**

Installation of MBRP Inc. "Smokers"TM 16.



Figure 5

1. Install the supplied **Gasket** onto the outlet of the Diesel Particulate Filter (DPF) followed by the **Elbow Assembly**. Secure with the supplied hardware (Shown in Detail B). **Refer to Figure 5.**



Figure 6

2. Loosely assemble the in bed portion of the **T-Pipe Assembly (T-Pipe, 13" Elbow and 37" Elbow)**. Some models may require trimming of the **T-Pipe** in order to accommodate the width of the truck bed and the **Stacks** that have been purchased. Be sure to place the appropriate **Clamps** over the pieces before they are assembled.



Figure 7

3. Place the **Stacks** onto the **T-Pipe Assembly** and place in the desired position in the truck bed. The **37" Elbow** should be on the driver side so that the **T-Pipe** passes through the bed floor towards the passenger side. **Refer to Figures 6 & 7.**

4. Place the **Stack Mounting Brackets** between each **Stack** and the front of the truck bed so that the **Stacks** are properly spaced from the front of the truck bed. Center the **Stack Mounting Brackets** on the **Stacks** and mark the front of the truck bed in the center of the slotted holes in the **Stack Mounting Brackets**. Center punch the marks and drill holes to accommodate a **3/8" Bolt** (included with the **Stack Mounting Brackets**). **Refer to Figure 8.**



Figure 8

5. Loosely attach the **Stack Mounting Brackets** to the front of the truck bed using the **3/8"** hardware supplied. Set the **Stacks** up in the bed and loosely attach them to the **Stack Mounting Brackets**. Make sure the **Stacks** are in the desired position and the **T-Pipe Assembly** is level.



Figure 9



Figure 10



Figure 11



Figure 12

6. Mark the bed floor where the **T-Pipe** is resting. MBRP Inc. recommends tracing around where the **T-Pipe** meets the bed floor. **Refer to Figure 9.** Remove the **Stacks** and **T-Pipe Assembly** from the bed of the truck. Find the center of the circle traced onto the bed floor, mark and center punch it. Go under the vehicle and locate the center punch mark. This marks the location where you are going to cut a hole for the **T-Pipe** to pass through the bed of the truck. If you cannot find the center punch mark use a small drill to create a pilot hole. Make sure that there is clearance for the **6" Extension Pipe, Flex Pipe and Elbow Assembly** to pass by any frame cross members. Remove or modify any heat shields that may cause interference.

7. Cut a hole through the truck bed providing adequate clearance around the part of the **T-Pipe** that passes through the truck bed. MBRP Inc. recommends using a 5" diameter hole saw. It may be required to cut away part of a bed floor rail away. **Refer to Figure 10.**

8. Slide the **Flex Pipe** over the outlet of the **Elbow Assembly** followed by the **Extension Pipe** into the outlet of the **Flex Pipe**. Be sure to install the appropriate **Clamps** prior to setting the **T-Pipe Assembly** over the outlet of the **Extension Pipe**. Please note that trimming of the **Flex Pipe** and/or the outlet of the **Elbow Assembly** may be required to set the **T Pipe** at the desired height from the floor of the bed. Loosely attach the **Stacks** to the **Stack Mounting Brackets** making sure that they are straight. **Refer to Figure 11.**

9. Make sure the **Stack Mounting Brackets** are centered on the **Stacks** and tighten the fasteners holding the **Stack Mounting Brackets** to the front of the truck bed. Tighten all **Clamps** to ensure your "**Smokers™**" exhaust system remains properly aligned. **Refer to Figure 12.**

10. Check along the entire length of the exhaust system to ensure that there is adequate clearance around the spare tire, fuel and brake lines or any wiring. If any interference is detected relocate or adjust.



Congratulations! You are ready to begin experiencing the improved power, sound and driving experience of your MBRP Inc. "Smokers™". We are certain you will enjoy your purchase.