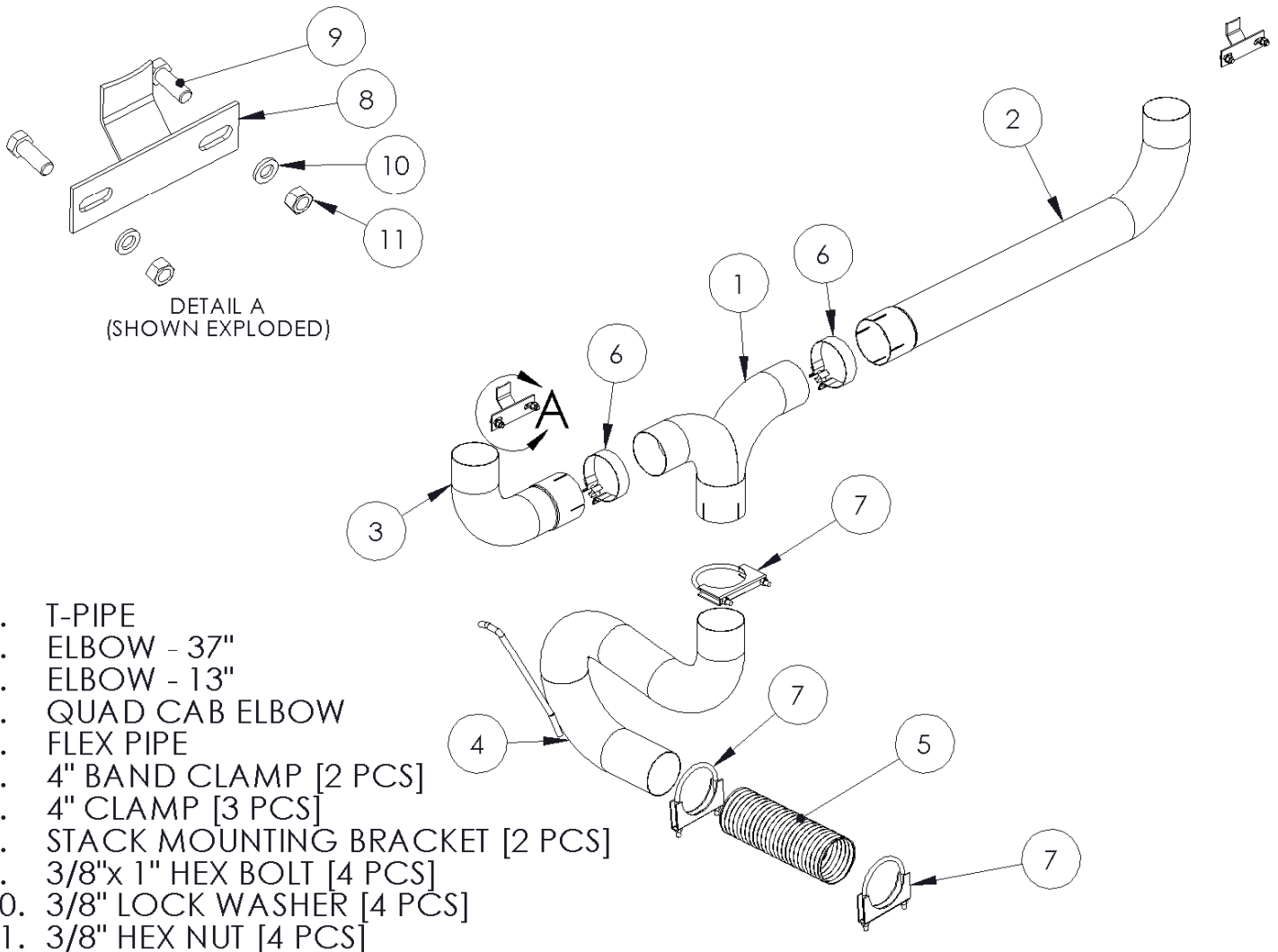


**S8104**

**07.5-09 DODGE QUAD CAB LONG BED  
6.7L FILTER BACK SMOKERS™**

**MBRP**  
INC.

**PERFORMANCE EXHAUST**



1. T-PIPE
2. ELBOW - 37"
3. ELBOW - 13"
4. QUAD CAB ELBOW
5. FLEX PIPE
6. 4" BAND CLAMP [2 PCS]
7. 4" CLAMP [3 PCS]
8. STACK MOUNTING BRACKET [2 PCS]
9. 3/8"x 1" HEX BOLT [4 PCS]
10. 3/8" LOCK WASHER [4 PCS]
11. 3/8" HEX NUT [4 PCS]

NOTE: STACKS SOLD SEPARATELY

### **PLEASE READ BEFORE STARTING INSTALLATION**

**While MBRP Inc. has made every effort to ensure that all components of this system are of superior quality and properly packaged it is the installer's responsibility to ensure the following before removal of the factory exhaust:**

- that ALL components shown above are present.
- that ALL mating components fit together.
- that there are no damaged components.
- that the system you have purchased is appropriate for your vehicle year, model and configuration.
- that the system will not interfere with any modifications previously installed or planned.
- that you have read and understand these instructions.

If you have any questions or are uncertain about any aspect of the installation of this system to your vehicle please contact your dealer before commencing installation.

### Removal of Stock System:



Figure 1

1. Apply a penetrating lubricant liberally to all exhaust fasteners, hangers and rubber insulators.
2. Loosen the factory band clamps located behind the Diesel Particulate Filter (DPF), the inlet, and the outlet of the muffler.
3. Remove the muffler and tail pipe from the OEM rubber hangers. Separate the stock exhaust system at the slip joints. Remove the muffler and tail pipe from under the truck.

### Installation of MBRP Inc. "Smokers™"



Figure 2

1. Loosely assemble the in bed portion of the **T-Pipe Assembly (T-Pipe, 13" Elbow and 37" Elbow)**. Some models may require trimming of the **T-Pipe** in order to accommodate the width of the truck bed and the **Stacks** that have been purchased. Be sure to place the **Band Clamps** over the pieces before they are assembled. **Refer to Figure 1.**
2. Place the **Stacks** onto the **T-Pipe Assembly** and place into the desired position in the truck bed. The **37" Elbow** should be on the driver side so that the **T-Pipe** passes through the bed floor towards the passenger side. **Refer to Figures 1 & 2.**
3. Place the **Stack Mounting Brackets** between each **Stack** and the front of the truck bed so that the **Stacks** are properly spaced from the front of the truck bed. Center the **Stack Mounting Brackets** on the **Stacks** and mark the front of the truck bed in the center of the slotted holes in the **Stack Mounting Brackets**. Center punch the marks and drill holes to accommodate the **3/8" Bolts** (included with the **Stack Mounting Brackets**). **Refer to Figure 3.**
4. Loosely attach the **Stack Mounting Brackets** to the front of the truck bed using the **3/8"** hardware supplied. Set the **Stacks** up in the bed and loosely attach them to the **Mounting Brackets**. Make sure the **Stacks** are in the desired position and the **T-Pipe Assembly** is level.



Figure 3



**Figure 4**



**Figure 5**

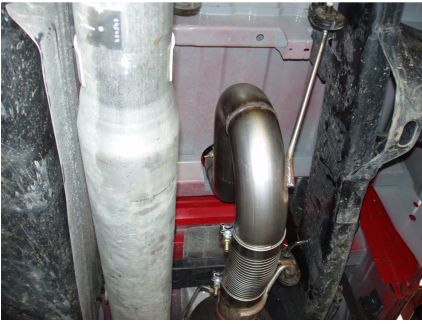


**Figure 6**



**Figure 7**

5. Mark the bed floor where the **T-Pipe** is resting. MBRP Inc. recommends tracing around where the **T-Pipe** meets the floor. **Refer to Figure 4.** Remove the **Stacks** and **T-Pipe Assembly** from the bed of the truck. Find the center of the circle traced onto the bed floor, mark and center punch it. Go under the vehicle and locate the center punch mark. This marks the location where you are going to cut a hole for the **T-Pipe** to pass through the bed of the truck. If you cannot find the center punch mark use a small drill to create a pilot hole. Make sure that there is clearance for the **Quad Cab Elbow** to pass by any frame cross members. Remove or modify any heat shields that there is interference with.
6. Cut a hole through the truck bed providing adequate clearance around the part of the **T-Pipe** that passes through the truck bed. MBRP Inc. recommends using a 5" diameter hole saw. It may be required to cut away part of a bed rail. **Refer to Figure 5.**
7. Set the **T-Pipe Assembly** at the desired height from the floor of the bed (This will set the height of the **Stacks**). Using spacers to hold the **T-Pipe** at the desired height, loosely attach the **Stacks** to the **Stack Mounting Brackets** making sure that they are straight. This will hold the assembly steady while you line up to the exhaust under the vehicle. **Refer to Figure 6.**
8. Pre-install the **Flex Pipe** onto the **Quad Cab Elbow** and slide the required **Clamps** onto the assembly. **Refer to Figure 7.**



**Figure 8**

9. Install the assembly from Step 8 onto the vehicle by inserting the outlet of the **Quad Cab Elbow** into the inlet of the **T-Pipe**. Install the hanger into the factory rubber isolator. Slide the **Flex Pipe** onto the outlet of the DPF. **Refer to Figure 8.**



**Figure 9**

10. Make sure the **Stack Mounting Brackets** are centered on the **Stacks** and tighten the fasteners holding the **Stack Mounting Brackets** to the front of the truck bed. Tighten all **Clamps** to ensure your "*Smokers™*" exhaust system remains properly aligned. **Refer to Figure 9.**



**Congratulations!** You are ready to begin experiencing the improved power, sound and driving excitement of your MBRP Inc. "*Smokers™*". We are certain you will enjoy your purchase.