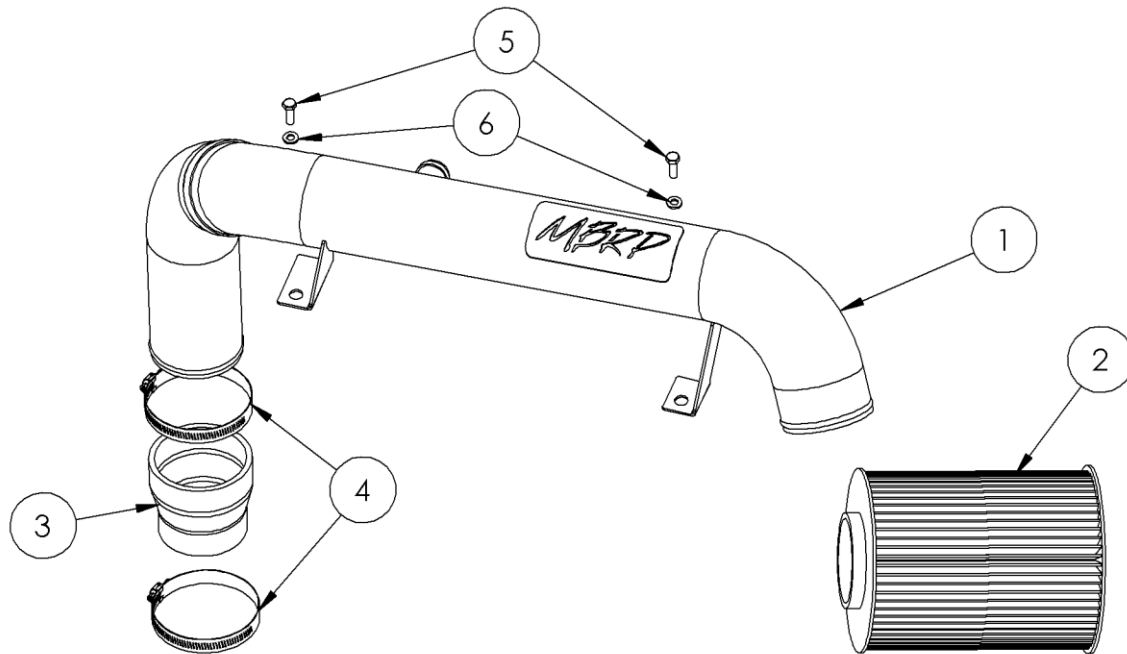


# A24200

AIR INTAKE - 2013-14 FORD FOCUS ST

**MBRP**  
INC.  
PERFORMANCE EXHAUST



1. AIR INTAKE TUBE
2. AIR FILTER ELEMENT
3. HOSE ADAPTOR
4. HOSE CLAMP (2 PCS)
5. M6 BOLT (2 PCS)
6. WASHER (2 PCS)

## PLEASE READ BEFORE STARTING INSTALLATION

While MBRP Inc. has made every effort to ensure that all components of this system are of superior quality and properly packaged, it is the installer's responsibility to ensure the following before removal of the factory components:

- that ALL components shown above are present.
- that ALL mating components fit together.
- that there are no damaged components.
- that the system you have purchased is appropriate for your vehicle year, model and configuration.
- that the system will not interfere with any modifications previously installed or planned.
- that you have read and understand these instructions.

If you have any questions or are uncertain about any aspect of the installation of this system to your vehicle please contact your dealer before commencing installation.

## 2013-14 Ford Focus ST

### Removal of Stock System:



Figure 1

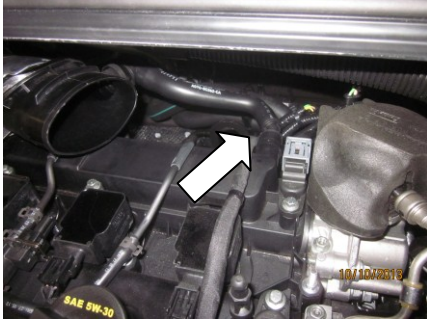


Figure 2



Figure 3

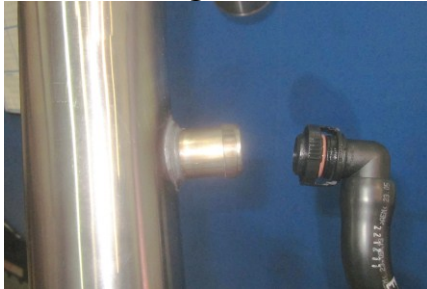


Figure 4



Figure 5

1. Remove the engine cover.
2. Loosen the hose clamps at the connection of the intake and the flex hose (coming from the air box), the turbocharger, and the clamp joining both halves of the intake.
3. Remove the bolt holding the filter side of the intake to the engine and remove the filter half of the intake.  
**Refer to Figure 1.**
4. Disconnect the crankcase vent fitting at the valve cover (squeeze to release).  
**Refer to Figure 2.**
5. Remove the bolt and engine cover ball stud from the valve cover and remove the turbo side of the intake.  
**Refer to Figure 3.**
6. Remove the crankcase vent hose from the turbo side of the intake (squeeze to release).

### Installation of MBRP Inc. Performance Intake:

1. Lubricate the O-rings on the factory crankcase vent hose connector and carefully install the crankcase vent hose onto the **Air Intake Tube**. Ensure that the O-rings are not damaged during insertion.  
**Refer to Figures 4 and 5.**
2. Install the **Hose Adaptor** onto the **Air Intake Tube** using one of the **Hose Clamps**. Place the other **Hose Clamp** over the turbocharger inlet.



**Figure 6**

3. Feed the **Air Intake Tube** over the valve cover and down to the turbo inlet. Slide the **Hose Clamp** over the **Hose Adaptor** and fit the **Hose Adaptor** over the turbo inlet.

**Refer to Figure 6.**



**Figure 7**

4. Insert the **Air Intake Tube** into the factory air intake flex hose on the factory air box and loosely install an **M6 Bolt** and **Washer** in the filter side bracket.

**Refer to Figure 7.**

5. Install an **M6 Bolt** and **Washer** in the turbo side bracket. Reinstall the engine cover ball stud using the factory metal spacer sleeve (arrow) from the factory intake.

**Refer to Figure 8.**



**Figure 8**

6. Tighten all hose clamps and both **M6 Bolts**.

7. Remove the 4 screws on the factory air box lid. Remove the factory air filter and replace with the high flow **Air Filter Element**.

**Refer to Figure 9.**

8. Reinstall the factory air box lid and the engine cover.

9. Check along the entire length of the air intake to ensure that there is adequate clearance.



**Figure 9**



**Congratulations!** You are ready to begin experiencing the improved power, sound and driving experience of your *MBRP Inc.* performance intake system. We know you will enjoy your purchase.