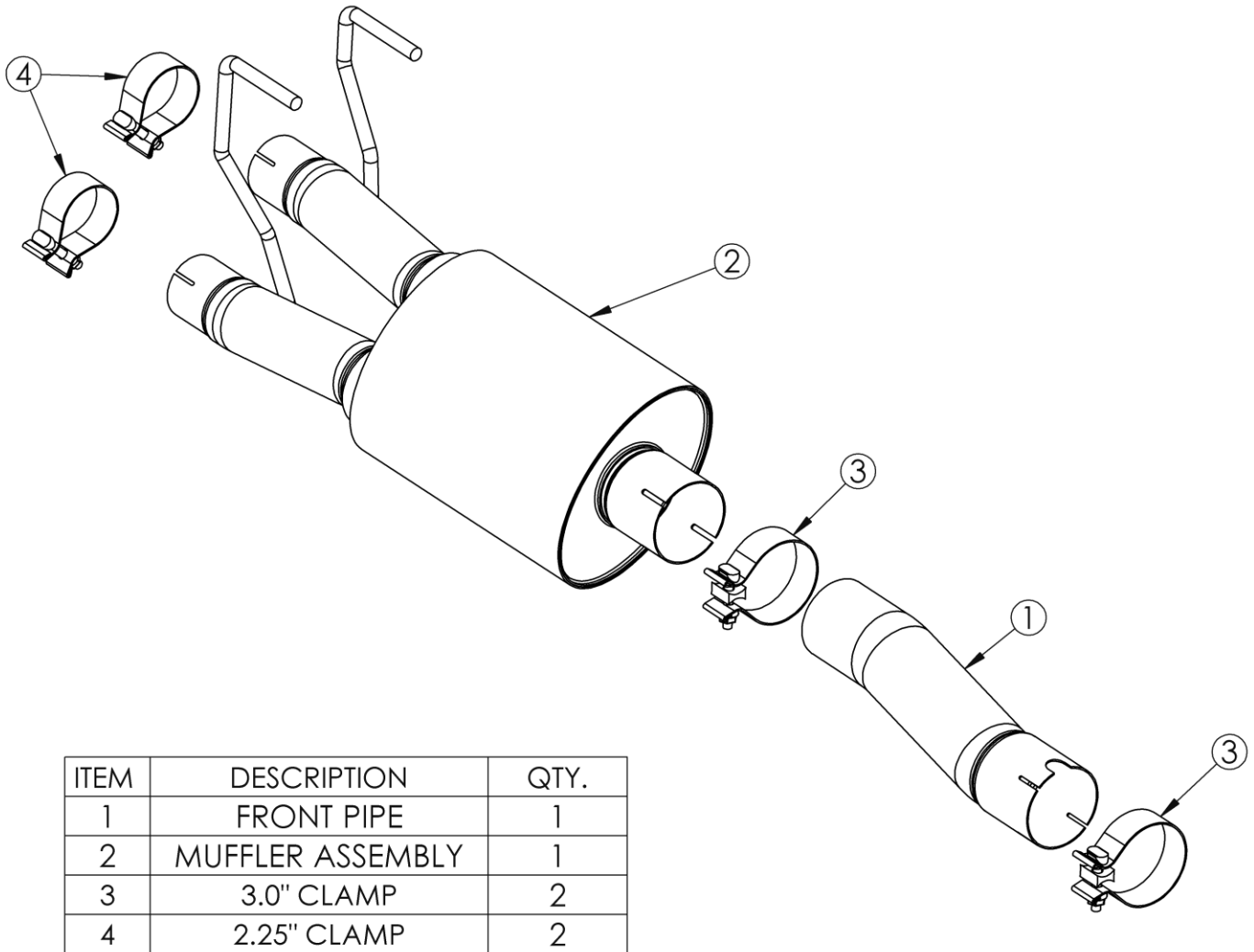


S5141

2009-2018 RAM 1500, 5.7L HEMI, 3" SINGLE IN 2.25"
DUAL OUT MUFFLER REPLACEMENT
2019 RAM 1500 CLASSIC 5.7L HEMI, 3" SINGLE IN 2.25"
DUAL OUT MUFFLER REPLACEMENT

MBRP



ITEM	DESCRIPTION	QTY.
1	FRONT PIPE	1
2	MUFFLER ASSEMBLY	1
3	3.0" CLAMP	2
4	2.25" CLAMP	2

PLEASE READ BEFORE STARTING INSTALLATION

While MBRP has made every effort to ensure that all components of this system are of superior quality and properly packaged, it is the installer's responsibility to ensure the following before removal of the factory exhaust:

- that ALL components shown above are present.
- that ALL mating components fit together.
- that there are no damaged components.
- that the system you have purchased is appropriate for your vehicle year, model and configuration.
- that the system will not interfere with any modifications previously installed or planned.
- that you have read and understand these instructions.

If you have any questions or are uncertain about any aspect of the installation of this system to your vehicle please contact your dealer before commencing installation.

MBRP

Note: replaces factory rear exit duals muffler

Removal of stock system:



Figure 1



Figure 2

1. Apply a penetrating lubricant liberally to all exhaust fasteners, hangers and rubber insulators.

2. Remove clamps from the rear of the muffler and remove the tail pipes from the muffler.

Refer to Figure 1.

3. Remove the clamp on the inlet of stock muffler and remove the muffler from the vehicle.

Refer to Figure 2.



Figure 3

Installation of MBRP Performance Exhaust:

1. Install the **Front Pipe** onto the factory front pipe, securing it with one of the supplied **3.0" Band Clamps**.

Refer to Figure 3.

2. Install the **Muffler Assembly** onto the **Front Pipe**, installing the hangers into the factory rubber insulators and securing it with the remaining **3.0" Clamp**.

Refer to Figure 4.

3. Reinstall the factory tail pipes into the **Muffler Assembly** outlets and secure them with the supplied **2.5" Clamps**.

Refer to Figure 5.

4. Align the exhaust as required. Starting at the front of the exhaust, tighten all clamps and connections.

5. Check along the whole length of the exhaust system to ensure that there is adequate clearance around the spare tire, fuel and brake lines or any wiring. If any interference is detected relocate or adjust.

Congratulations! You are ready to begin experiencing the improved power, sound and driving experience of your **MBRP** performance exhaust system. We know you will enjoy your purchase.



Figure 4



Figure 5