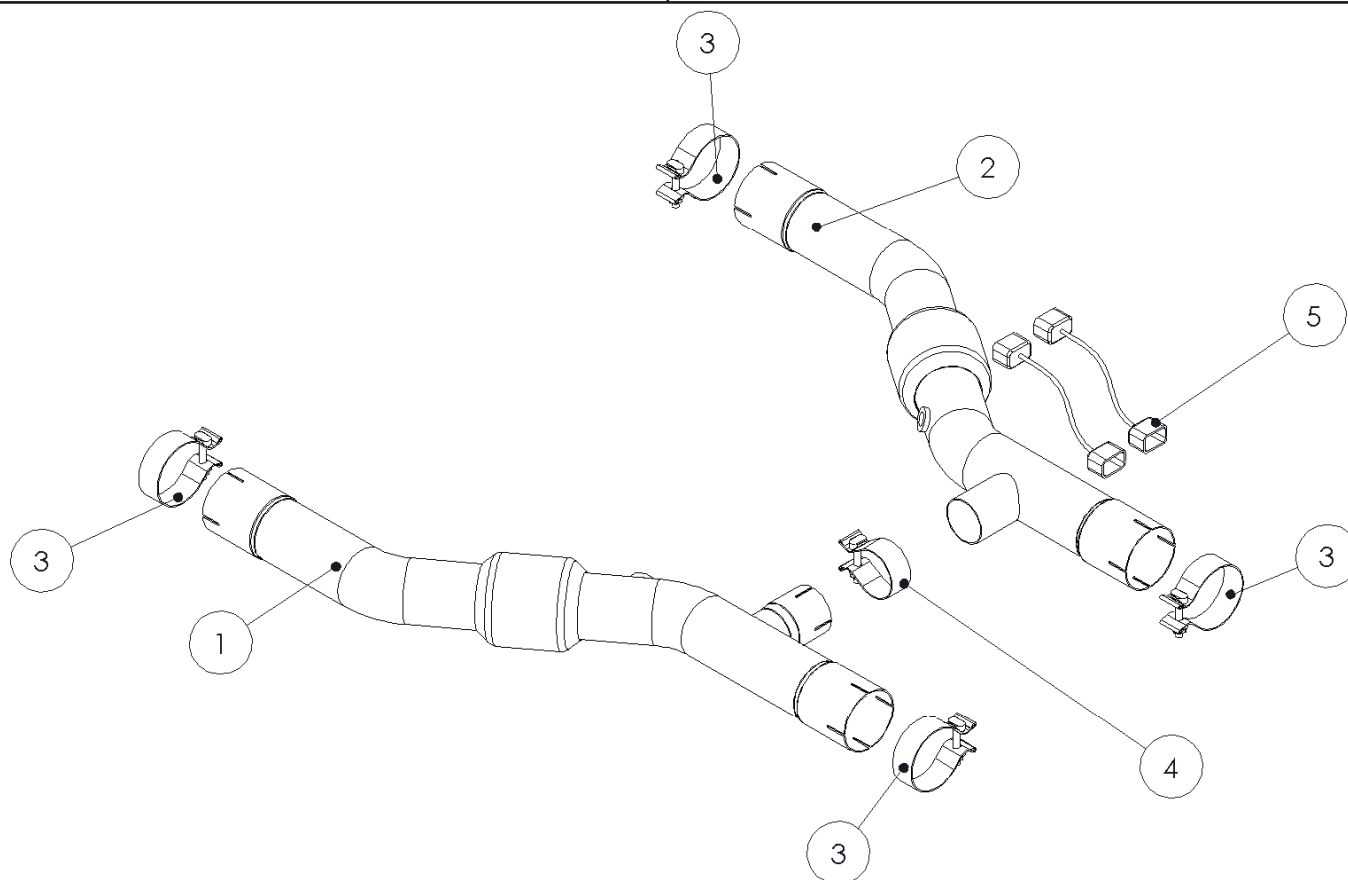


S7234

GT500 CATTED H PIPE FOR HEADERS

MBRP
INC.
PERFORMANCE EXHAUST



1. DRIVER SIDE H PIPE
2. PASSENGER SIDE H PIPE
3. 3" CLAMP [4 PCS]
4. 2.25" CLAMP
5. O2 SENSOR EXTENSIONS [2PCS]

PLEASE READ BEFORE STARTING INSTALLATION

While MBRP Inc. has made every effort to ensure that all components of this system are of superior quality and properly packaged it is the installer's responsibility to ensure the following before removal of the factory exhaust:

- that ALL components shown above are present.
- that ALL mating components fit together.
- that there are no damaged components.
- that the system you have purchased is appropriate for your vehicle year, model and configuration.
- that the system will not interfere with any modifications previously installed or planned.
- that you have read and understand these instructions.

If you have any questions or are uncertain about any aspect of the installation of this system to your vehicle please contact your dealer before commencing installation.

2011 Mustang GT500 Catted H-Pipe

Note; This Kit requires the installation of MBRP S7228 Header Kit, and either S7208 Street Series or S7216 Race Series Cat Back Exhaust Kit

Removal of Stock H-Pipe



Figure 1



Figure 2

1. Refer to the instructions for your MBRP Cat Back Exhaust Kit for removal of the OEM cat back system.
2. Install your S7228 Header Kit as per the instructions included in the kit.

Installation of MBRP Inc. Performance Exhaust:

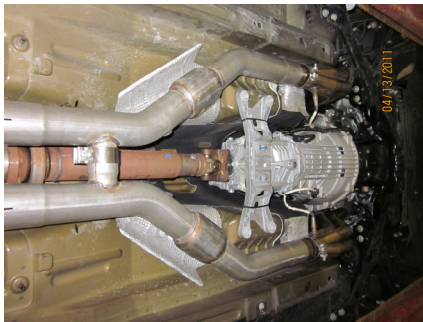


Figure 3

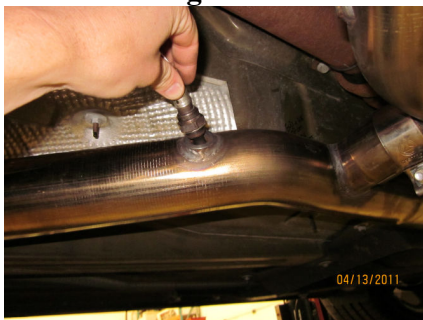


Figure 4

1. Assemble the **Driver side H Pipe** and the **Passenger side H Pipe** on the floor. Be sure the expanded portion of the 2.25" Crossover Pipe is on the driver side of the car and that the appropriate clamps have been loosely installed.
Refer to Figure 1.
2. Install a **3" Clamp** over the outlet of each MBRP Header.
Refer to Figure 2.
3. Install the H pipe assembly onto the car by sliding the H pipe onto the header collectors.
Refer to Figure 3.
4. Remove the rear O2 sensors from the OEM Pipe and reinstall them in the MBRP H pipe.
Refer to Figure 4.

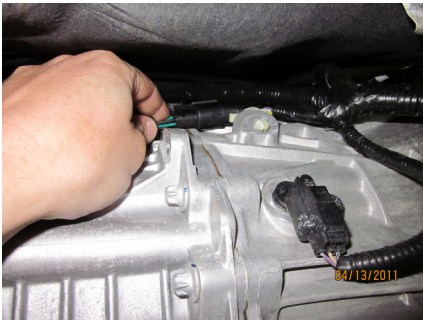


Figure 5



Figure 6

5. Connect the O2 sensors to the factory wiring harness with the supplied **O2 Sensor Extensions**.

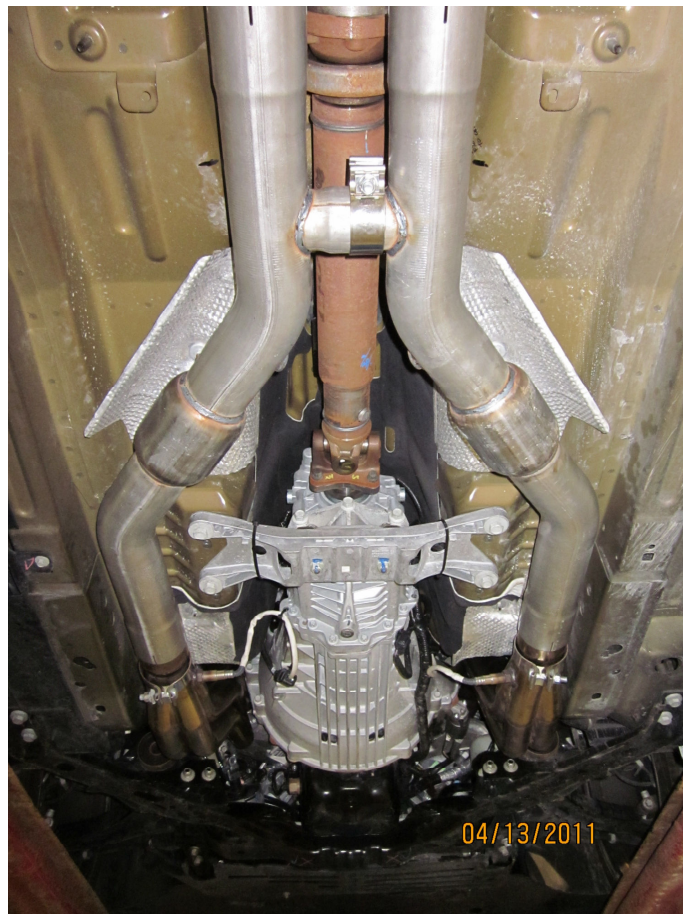
Refer to Figure 5.

6. The MBRP Cat Back Exhaust Kit is designed to work with the smaller OEM H Pipe Tubing. Modifications are required to the MBRP Cat Back Extension Pipes in order to correctly connect to the MBRP H Pipe. Mark the pipes 3" back from the reduced inlet end and cut.

Refer to Figure 6.

7. Continue the installation of your MBRP Cat Back Exhaust Kit as show in the Instruction Sheet supplied in the kit.

8. Adjust the system to provide clearance between all other under body components and hoses while ensuring the Tips are centered in the rear Fascia. Tighten all clamps once properly adjusted.



Congratulations! You are ready to begin experiencing the improved power, sound and driving excitement of your MBRP Inc. performance exhaust system. We know you will enjoy your purchase.