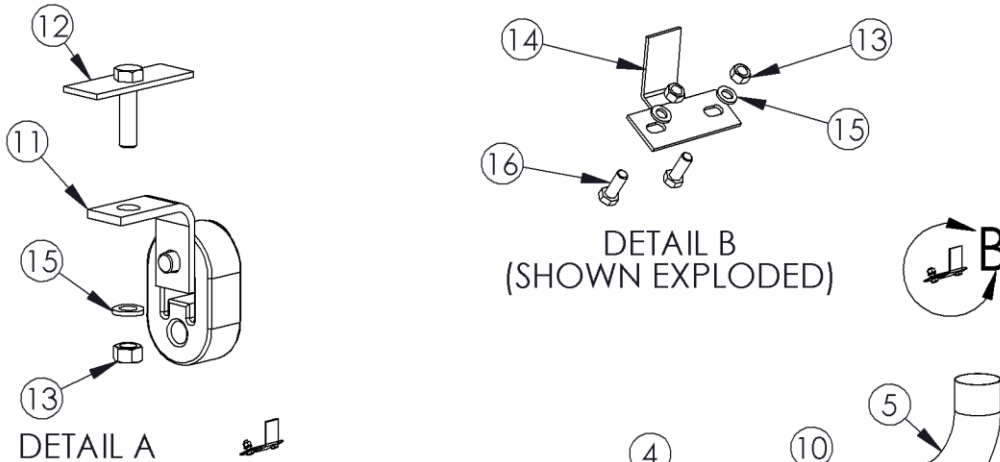


S8202

08 - 10 FORD 6.4L FILTER BACK SMOKERS™
CREW CAB SHORT & LONG BED

MBRP INC.

PERFORMANCE EXHAUST



1. ADAPTER - 3.5" TO 4"
2. FLEX PIPE
3. ELBOW - 20"
4. T-PIPE
5. ELBOW - 13"
6. ELBOW - 37"
7. 3.5" CLAMP
8. 4" CLAMP (3 PCS)
9. 4" HANGER CLAMP
10. 4" BAND CLAMP (2 PCS)
11. HANGER ASSEMBLY
12. PLATE MOUNTED BOLT
13. 3/8" NUT (5 PCS)
14. STACK MOUNTING BRACKET (2 PCS)
15. 3/8" LOCK WASHER (5 PCS)
16. 3/8" BOLT (4 PCS)

NOTE: STACKS SOLD SEPARATELY

PLEASE READ BEFORE STARTING INSTALLATION

While MBRP Inc. has made every effort to ensure that all components of this system are of superior quality and properly packaged it is the installer's responsibility to ensure the following before removal of the factory exhaust:

- that ALL components shown above are present.
- that ALL mating components fit together.
- that there are no damaged components.
- that the system you have purchased is appropriate for your vehicle year, model and configuration.
- that the system will not interfere with any modifications previously installed or planned.
- that you have read and understand these instructions.

If you have any questions or are uncertain about any aspect of the installation of this system to your vehicle please contact your dealer before commencing installation.



Figure 1

Removal of Stock System:

1. Apply a penetrating lubricant liberally to all exhaust fasteners, hangers and rubber insulators.
2. Loosen the nut on the band clamp located behind the Diesel Particulate Filter (DPF).
3. Remove the muffler and tail pipe from the OEM rubber hangers. If a hoist is being used the system can be removed in one piece by removing the passenger side bottom shock bolt and swinging the shock out of the way. Separate the stock exhaust system at the slip joint located behind the DPF. Remove the muffler and tail pipe from under the truck. **Be sure to re-install the bottom shock bolt.** If a hoist is not being used you will have to cut the tail pipe at the over axle section, behind the muffler and remove the exhaust in two pieces. Refer to Figure 1.



Figure 2

Installation of MBRP Inc. "Smokers"™ :

1. Loosely assemble the in bed portion of the **T-Pipe Assembly (T-Pipe, 13" Elbow and 37" Elbow)**. Some models may require trimming of the **T-Pipe** in order to accommodate the width of the truck bed and the **Stacks** that have been purchased. Be sure to place the **Band Clamps** over the pieces before they are assembled.
2. Place the **Stacks** onto the **T-Pipe Assembly** and place into the desired position in the truck bed. The **37" Elbow** should be on the driver side so that the **T-Pipe** passes through the bed floor towards the passenger side. Refer to Figure 2.
3. Place the **Stack Mounting Bracket** between each **Stack** and the front of the truck bed so that the **Stacks** are properly spaced from the front of the truck bed. Center the **Stack Mounting Brackets** on the **Stacks** and mark the front of the truck bed in the center of the slotted holes in the **Stack Mounting Brackets**. Center punch the marks and drill holes to accommodate the **3/8" Bolts** (included with the **Stack Mounting Brackets**). Refer to Figure 3.
4. Loosely attach the **Stack Mounting Brackets** to the front of the truck bed using the **3/8"** hardware supplied. Set the **Stacks** up in the bed and loosely attach them to the **Stack Mounting Brackets**. Make sure the **Stacks** are in the desired position and the **T-Pipe Assembly** is level.

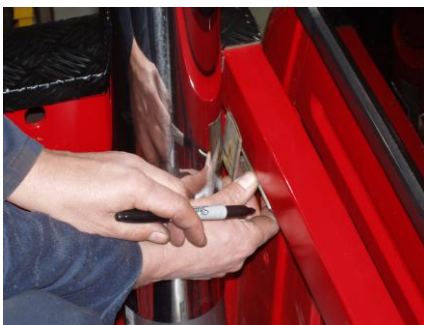


Figure 3



Figure 4



Figure 5



Figure 6



Figure 7



Figure 8

5. Mark the bed floor where the **T-Pipe** is resting. MBRP Inc. recommends tracing around where the **T-Pipe** meets the bed floor. **Refer to Figure 4.** Remove the **Stacks** and **T-Pipe Assembly** from the bed of the truck. Find the center of the circle traced onto the bed floor, mark and center punch it. Go under the vehicle and locate the center punch mark. This marks the location where you are going to cut a hole for the **T-Pipe** to pass through the bed of the truck. If you cannot find the center punch mark use a small drill to create a pilot hole. Make sure that there is clearance for the **20" Elbow** to pass by any frame cross members. Remove or modify any heat shields that there is interference with.
6. Cut a hole through the truck bed providing adequate clearance around the part of the **T-Pipe** that passes through the truck bed. MBRP Inc. recommends using a 5" hole saw. It may be required to cut away part of a bed rail. **Refer to Figure 5.**
7. Set the **T-Pipe Assembly** at the desired height from the floor of the bed (This will set the height of the **Stacks**). Using spacers to hold the **T-Pipe** at the desired height, loosely attach the **Stacks** to the **Stack Mounting Brackets** making sure that they are straight. This will hold the assembly steady while you line up to the exhaust under the vehicle. **Refer to Figure 6.**
8. Install the **3.5" – 4" Adapter** with a **3.5" Clamp** over the outlet of the DPF. Pay attention to the alignment of the notch in the **3.5"-4" Adapter** and the pin located on the outlet of the DPF. Ensure that the **Adapter** is fully seated. **Refer to Figure 7.**
9. Install the **4" Hanger Clamp** by placing the **Plate Mounted Bolt** on top of the cross member with bolt extending down through the hole in the cross member. Secure the **4" Hanger Assembly** with a **3/8" Nut** and **3/8" Lock Washer**. **Refer to Figure 8.**
10. Loosely attach the **20" Elbow** into the **T-Pipe**. Install the **4" Hanger Clamp** in the **Hanger Assembly** and loosely fit it to the horizontal section of the **20" Elbow**. Measure and mark the horizontal section of the **20" Elbow** so that you can use the maximum length of **Flex Pipe** and maintain at least 2" of overlap for clamping between the **3.5"-4" Adapter** to the **Flex Pipe**, and **Flex Pipe** to **20" Elbow** joints. Remove and cut the **20" Elbow** to the required length.
11. Attach the **20" Elbow** to the **T-Pipe** slip joint and then attach the **Flex Pipe** to both the **20" Elbow** and then **3.5"- 4" Adapter**. Be sure to slide the required **Clamps** over all joints before fitting pieces together.
12. Make sure the **Stack Mounting Brackets** are centered on the **Stacks** and tighten the fasteners holding the **Mounting Brackets** to the front of the truck bed. Tighten all **Clamps** to ensure your **"Smokers™"**

exhaust system remains properly aligned.



13. Check along the entire length of the exhaust system to ensure that there is adequate clearance around fuel lines, brake lines and any wiring. If any interference is detected relocate or adjust.



Congratulations! You are ready to begin experiencing the improved power, sound and driving excitement of your MBRP Inc. *"Smokers™"*. We are certain you will enjoy your purchase.